



www.strikercrushing.com



Mobile Crushing & Screening

HQR1112

Features & Benefits









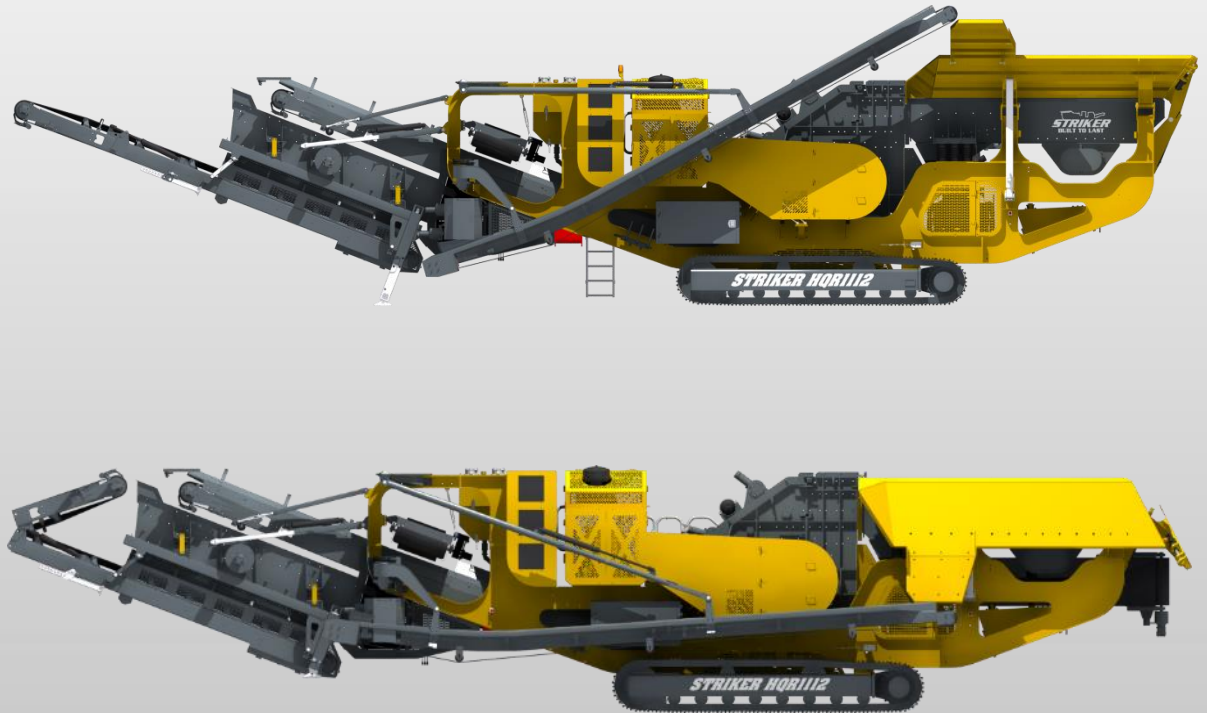
(SP02SI147-1901)

Tracked Impact Crusher HQR1112



Transport Dimensions

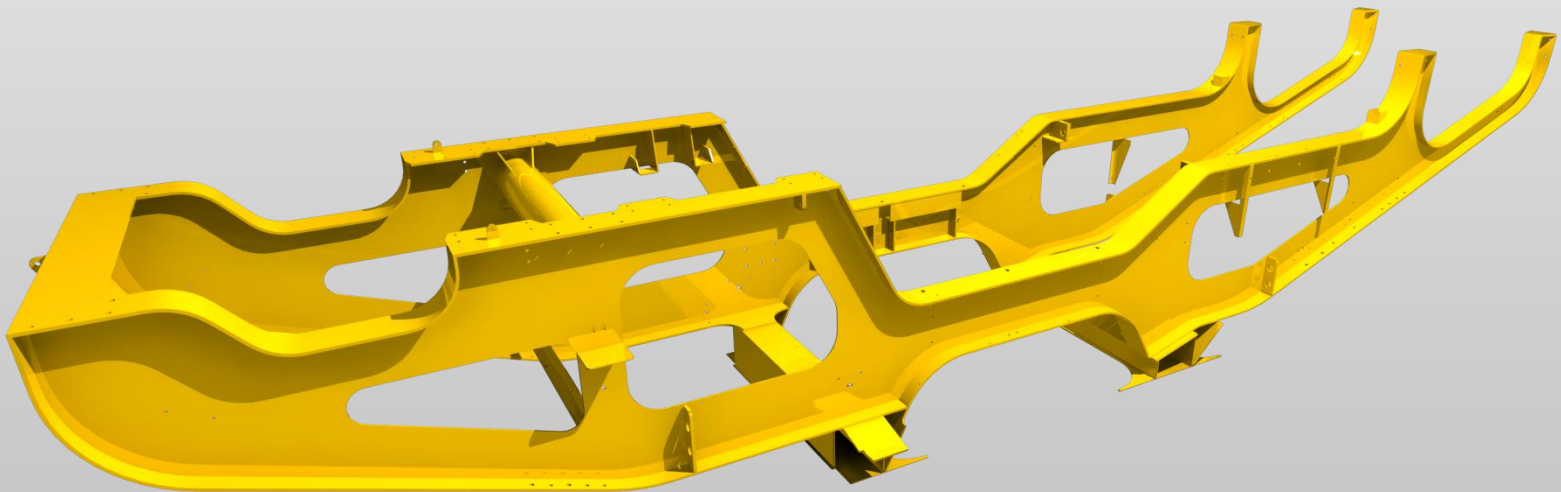
| HQR1112 | |
|-------------------------------------------------------------------------------------|-------------------|
| Operating Dimensions: | |
|  | 16616mm 54' 6" |
|  | 5055mm 16' 7" |
|  | 4873mm 16' |
| Transport Dimensions: | |
|  | 16918mm 55' 6" |
|  | 3532mm 11' 7" |
|  | 3579mm 11' 9" |
| Weight (T): | 47T |
| Weight (lbs): | 103,617lbs |



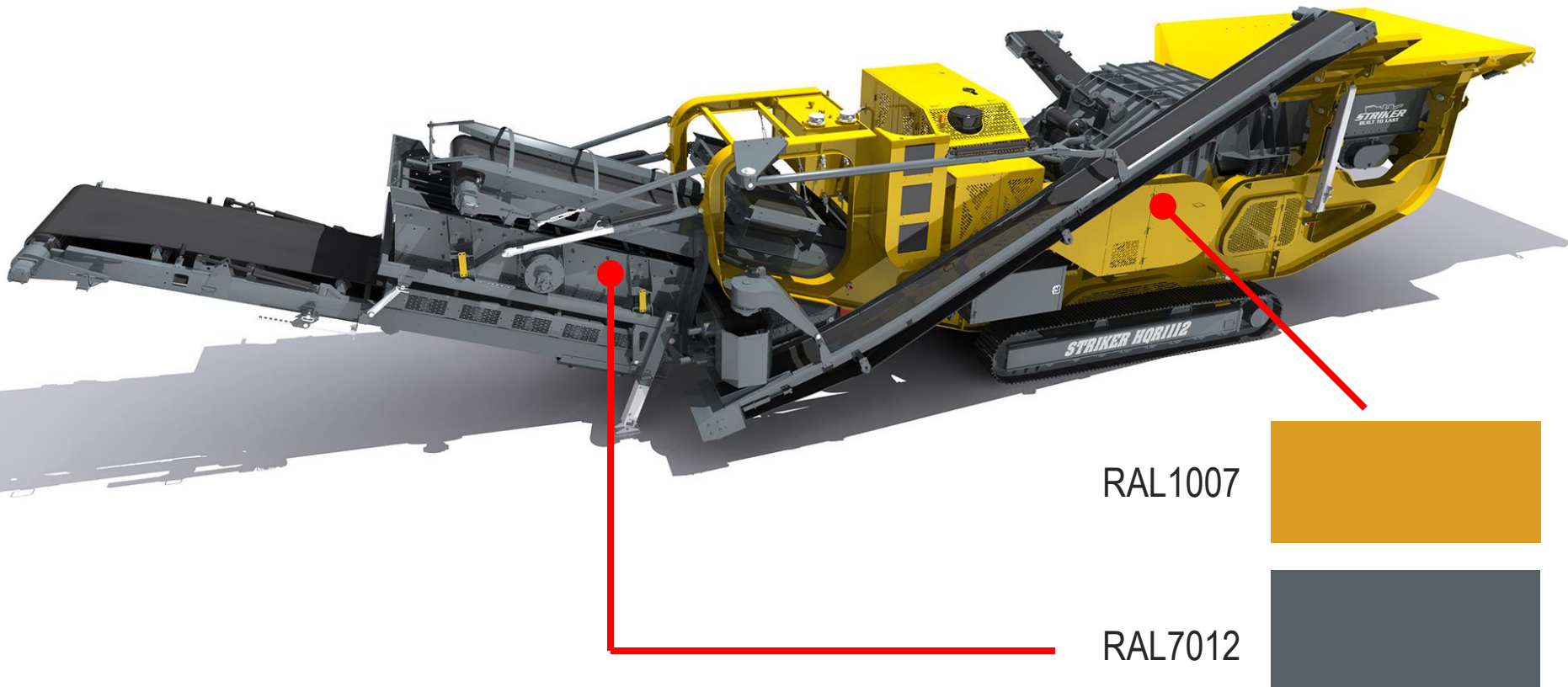
NOTE: Higher & Wider – Track width increases 400mm and raises 200mm. This gives increase ground clearance and maintenance access.

Chassis

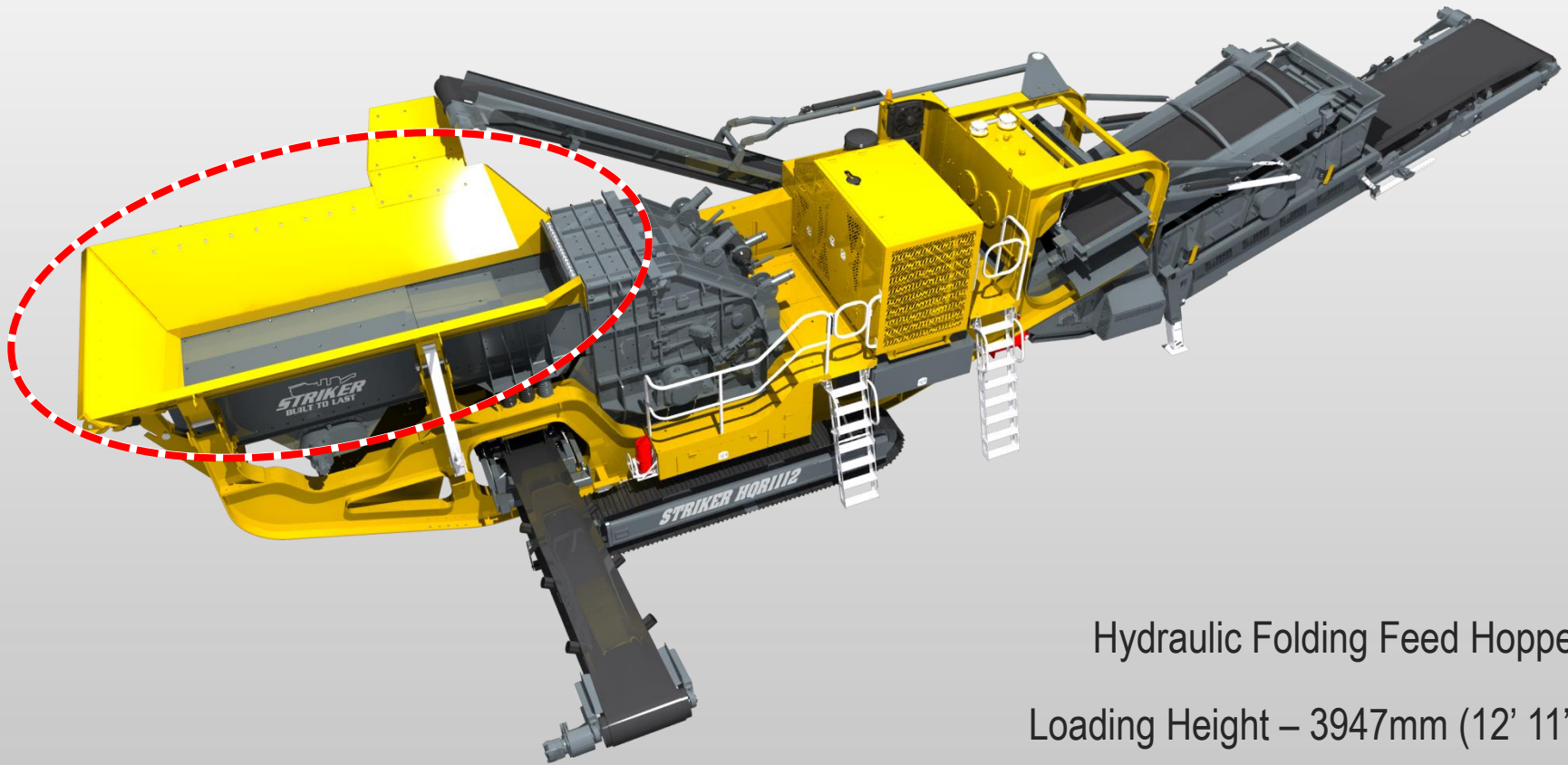
Extra heavy duty body – welded robust steel chassis



Standard Paint (RAL)



Feed Hopper

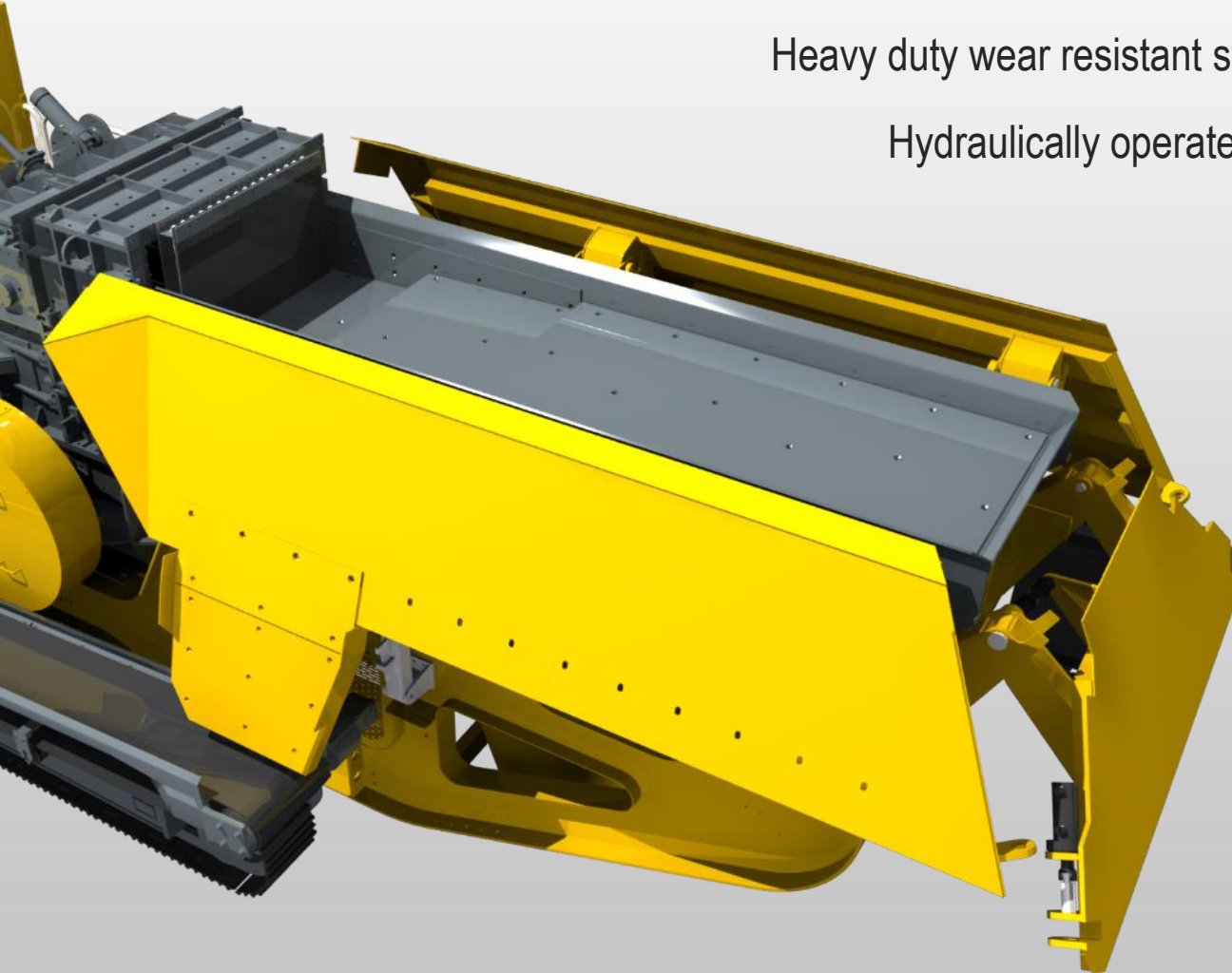


Hydraulic Folding Feed Hopper

Loading Height – 3947mm (12' 11")

Feed Hopper Capacity – 7.0m³ (9.0yd³)

Feed Hopper Wings



Heavy duty wear resistant steel feed hopper construction

Hydraulically operated folding side and rear wings

Reinforced box section webs

Rapid set up time

Feed Hopper Pins

Unique hydraulic locating and locking system

Increased safety feature

Removes the need to climb on the plant

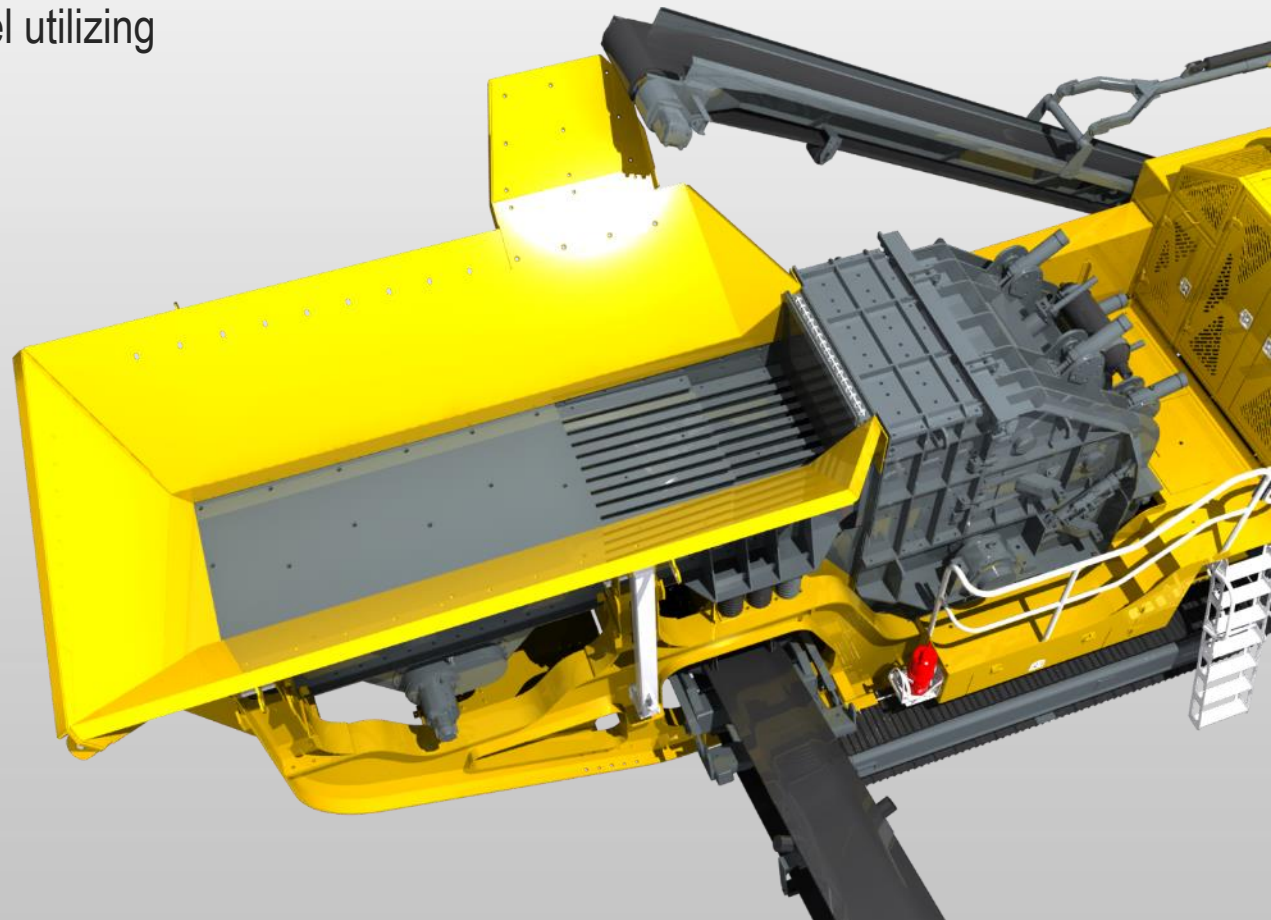


Feeder Liners

Fabricated from either high quality wear resistant steel plate or mild steel utilizing wear resistant liners

Feeder Liners to protect the hopper from excessive wear

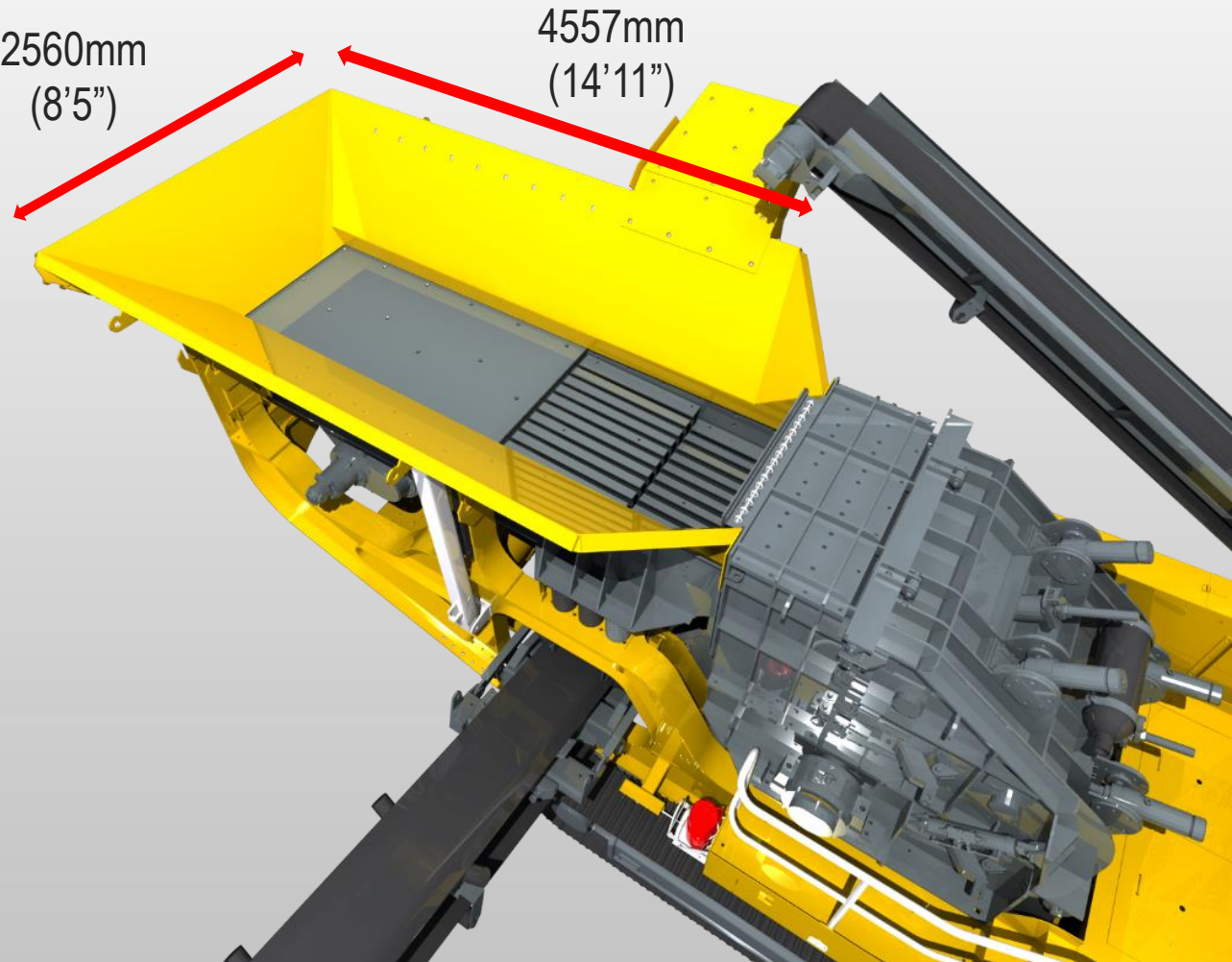
Easy to replace



Feed Hopper Dimensions

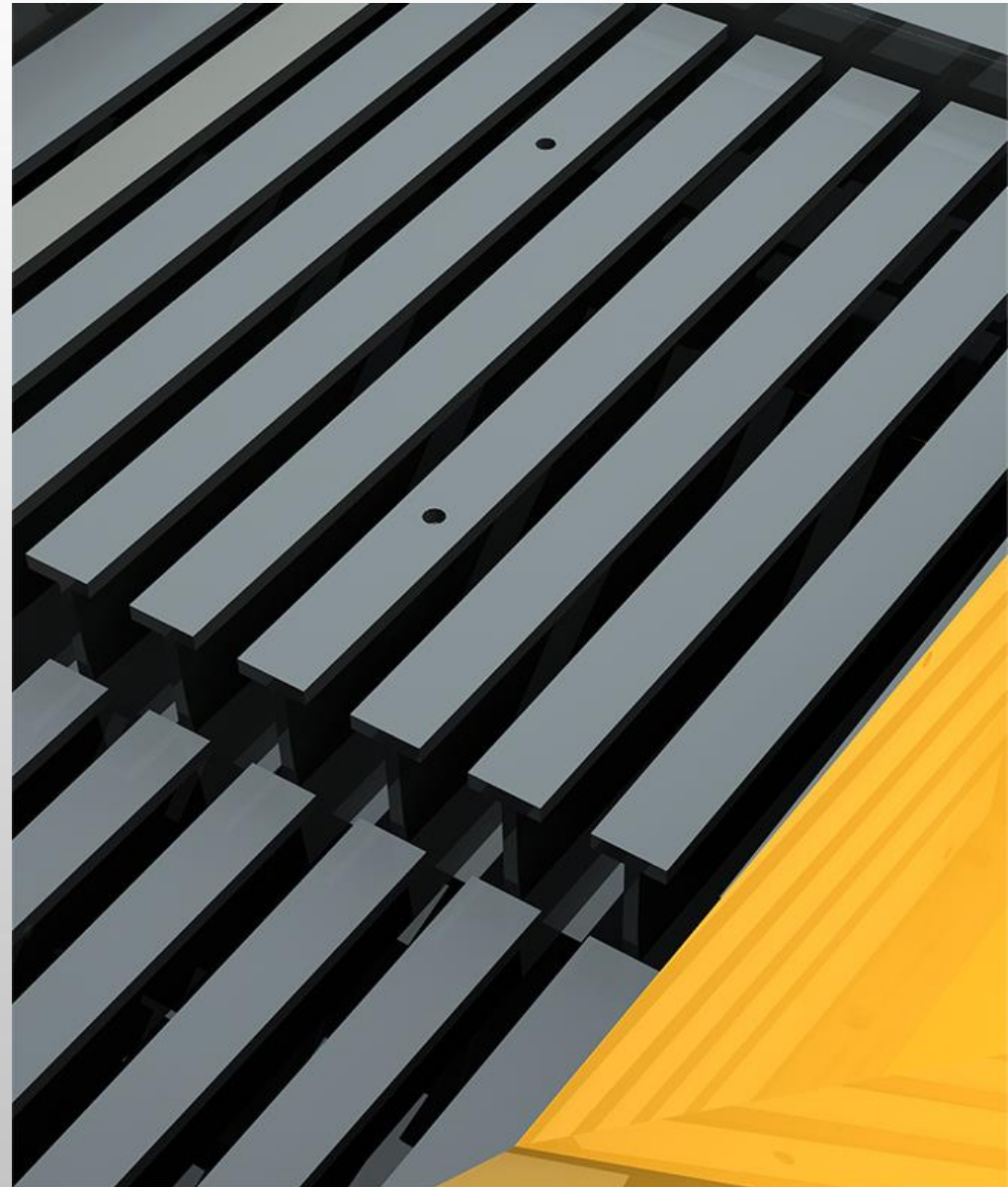
2560mm
(8'5")

4557mm
(14'11")



Grizzly Feeder

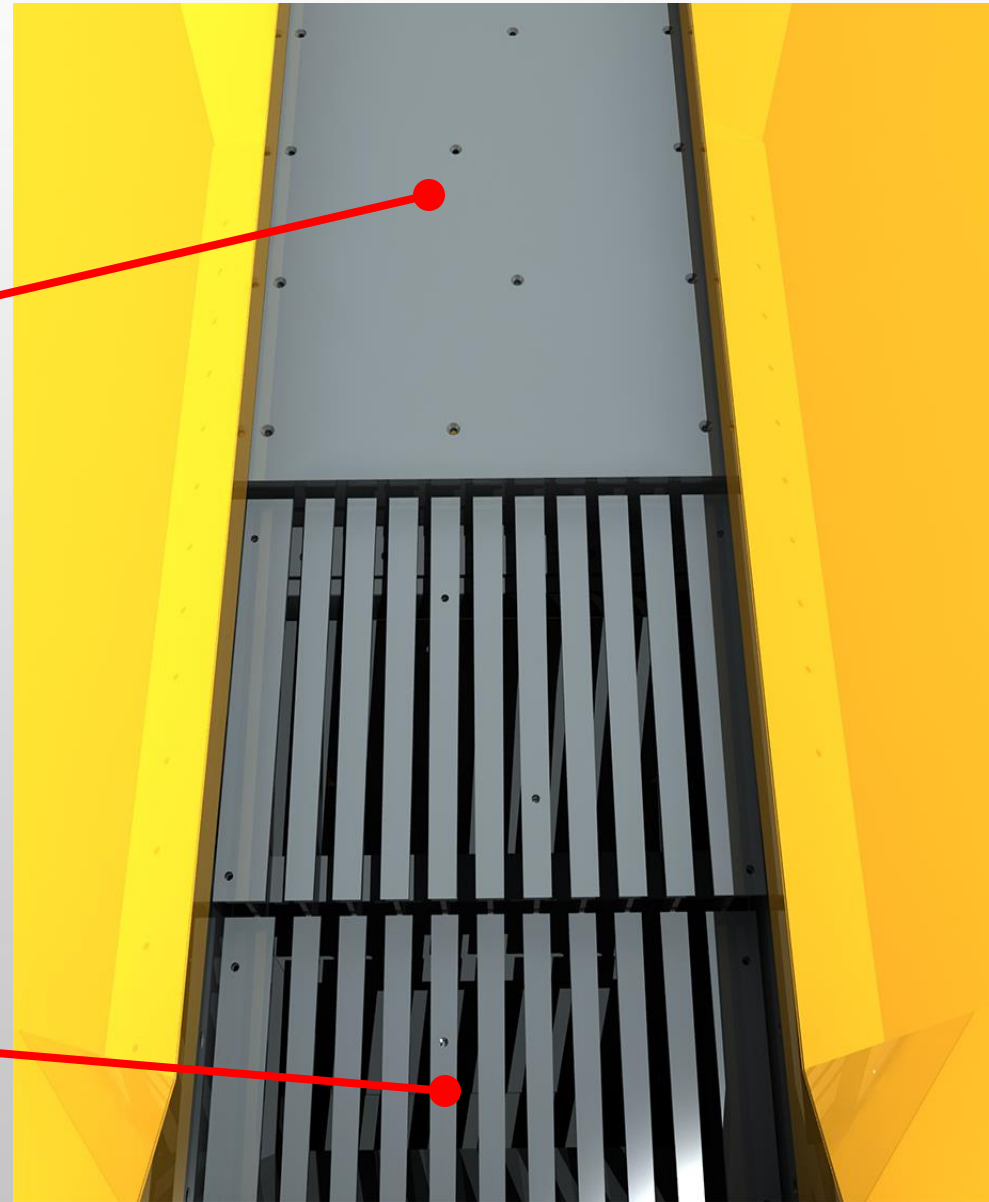
- Fabricated from wear resistant steel
- Grizzly cartridges with 43mm (1.6") nominal spacing
- Two stepped bolt in grizzly cartridges
- Twin shaft exciter coupled with hydraulic motor
- Variable speed control
- Blanking plates for grizzly



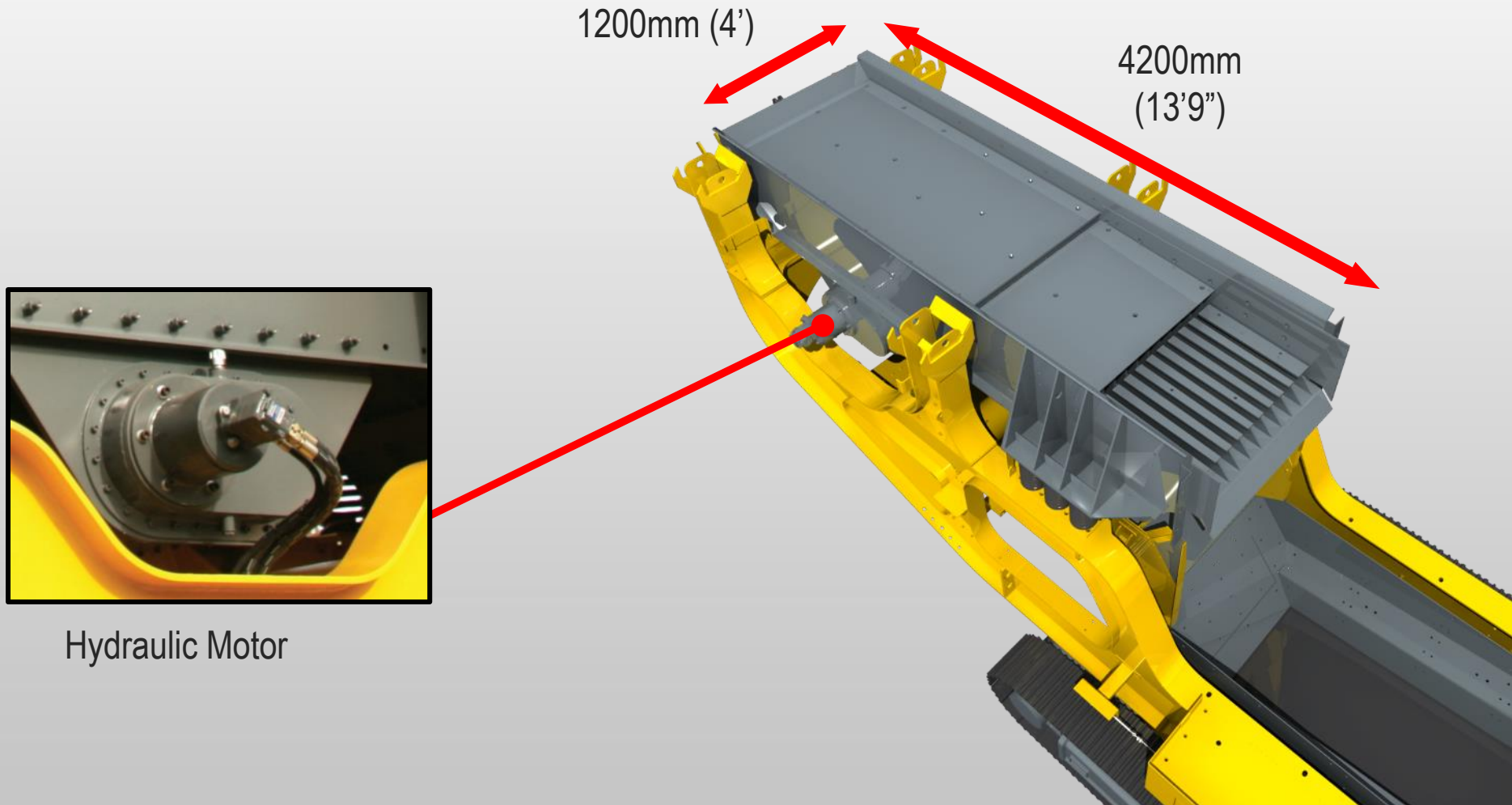
Grizzly Feeder

Wear Resistant Liners

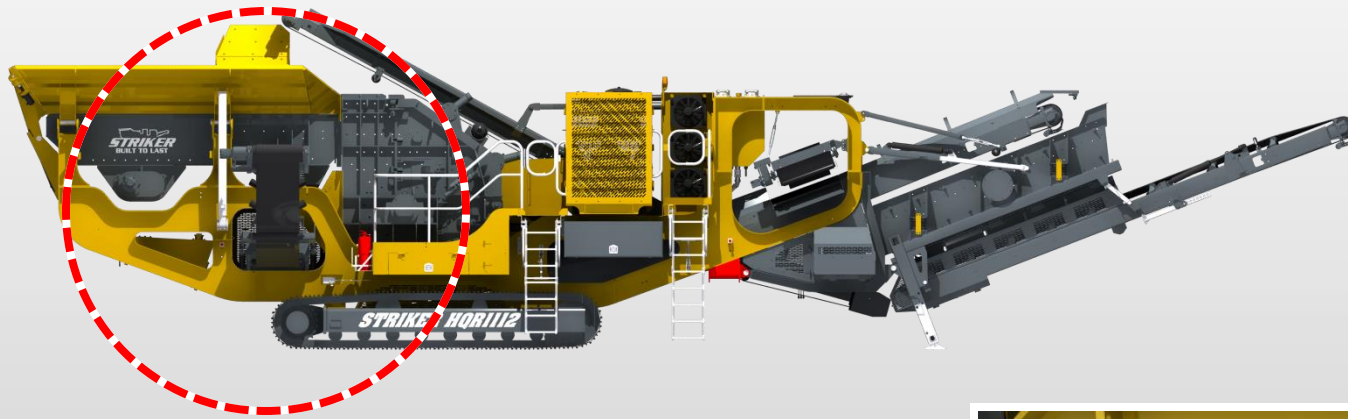
Self Cleaning Stepped Cartridge



Grizzly Feeder Dimensions

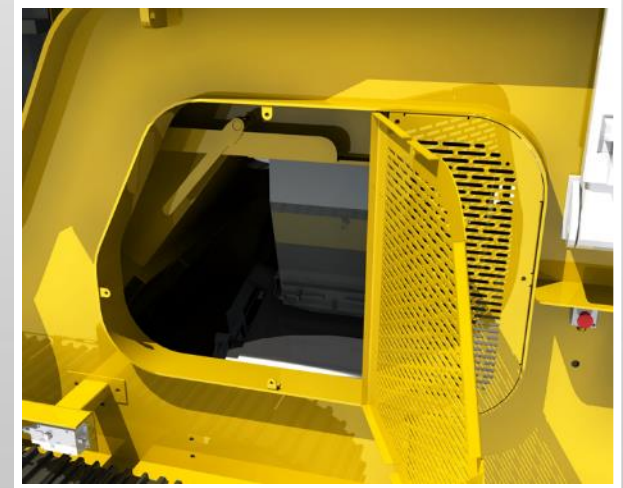


By-Pass Chute

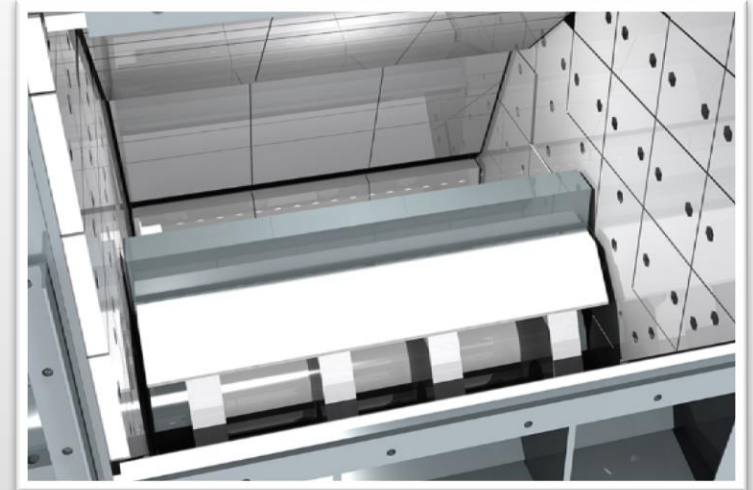
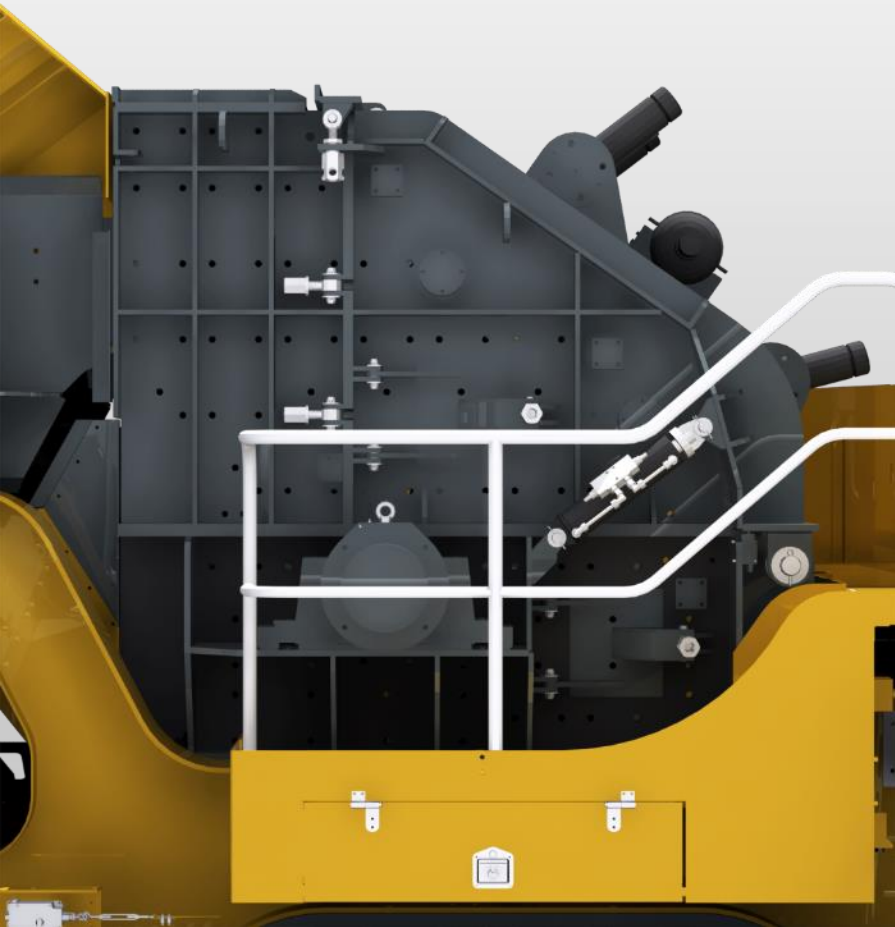


By-Pass chute removes natural fines from the feed material and discharge onto the “Side Discharge Conveyor”

The lever operates a two way door for diverting material either onto the “Forward Product Conveyor” or the “Side Discharge Conveyor”



Impactor

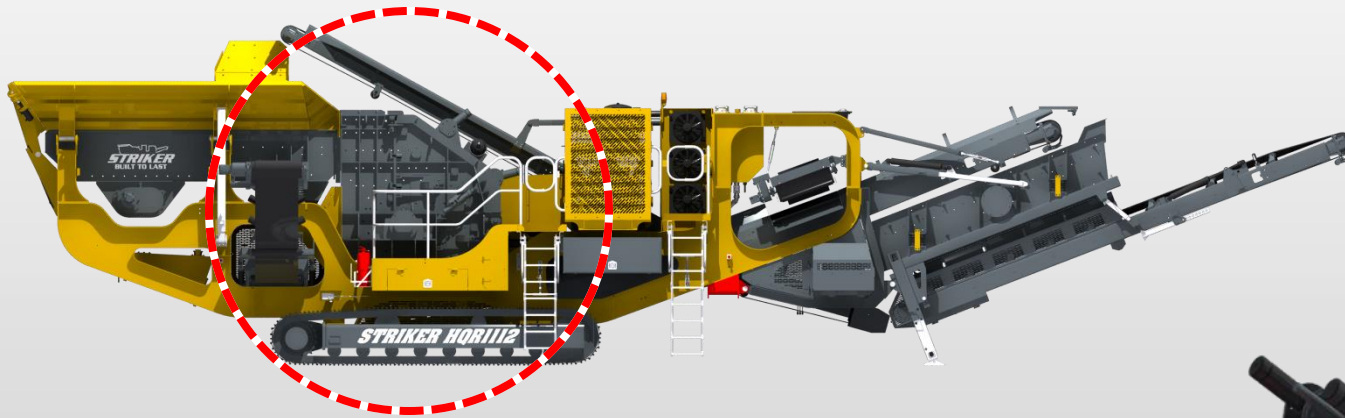


Well proven high performance impactor featuring heavy-duty open disc style rotors with four blow bars as standard

Blow bar support beams sized to ensure the rotor has the highest moment of inertia available

Hydraulic overload protection system

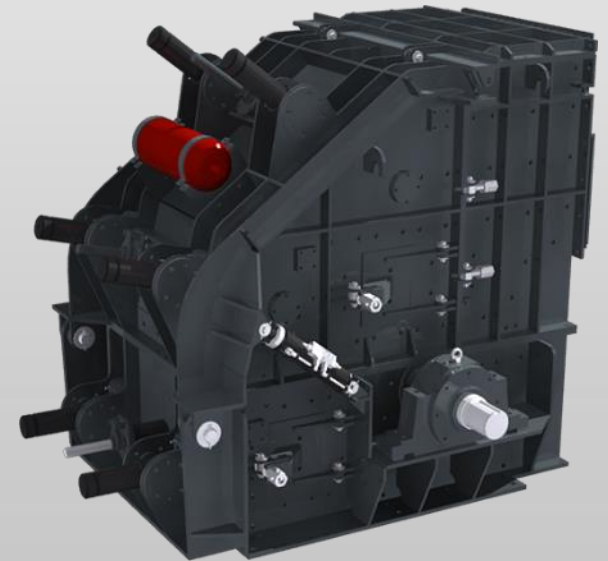
Impact Crusher



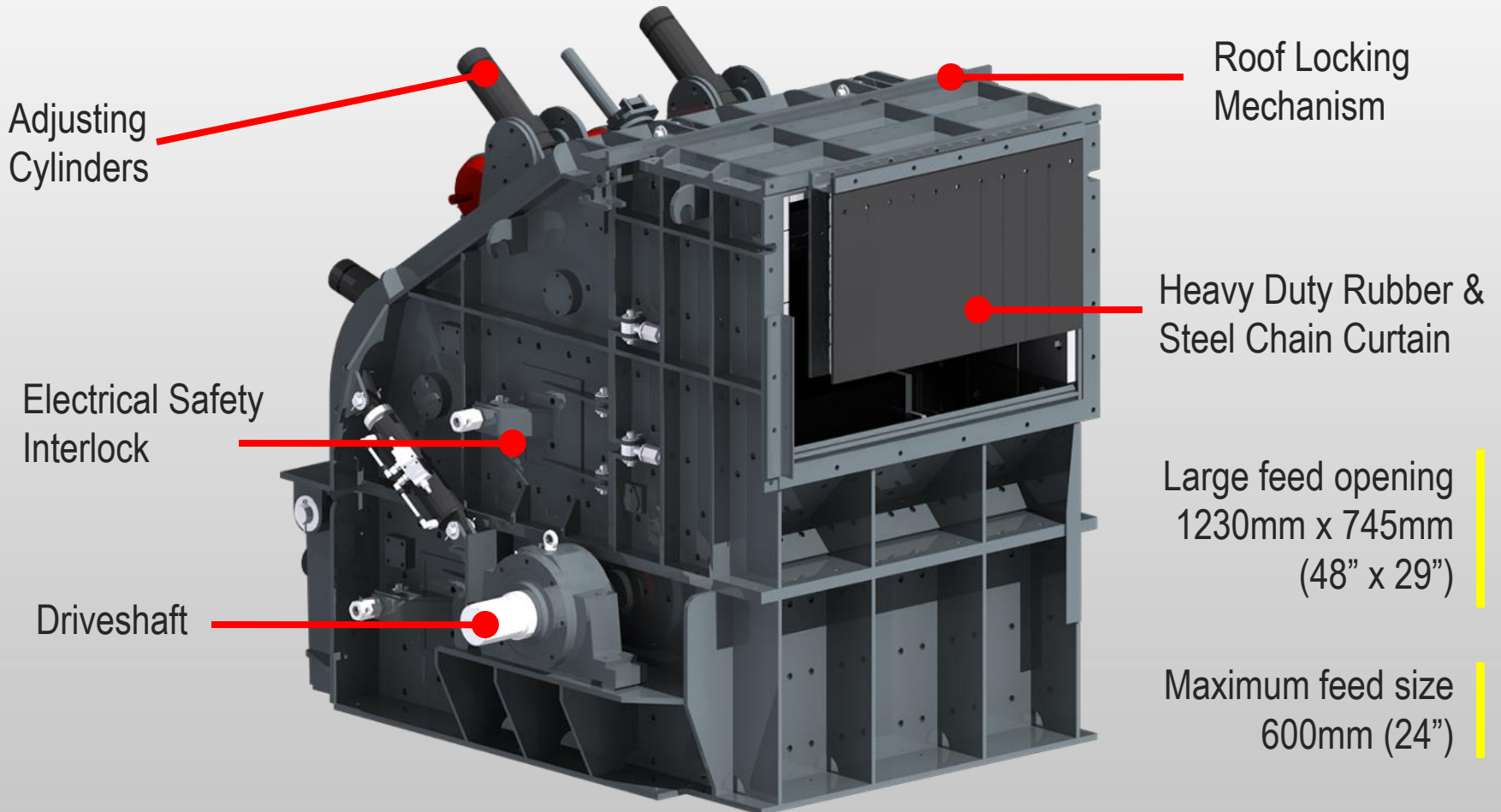
1120mm diameter x 1210mm (44" x 48")
wide impact crusher

130 – 250 tph capacity

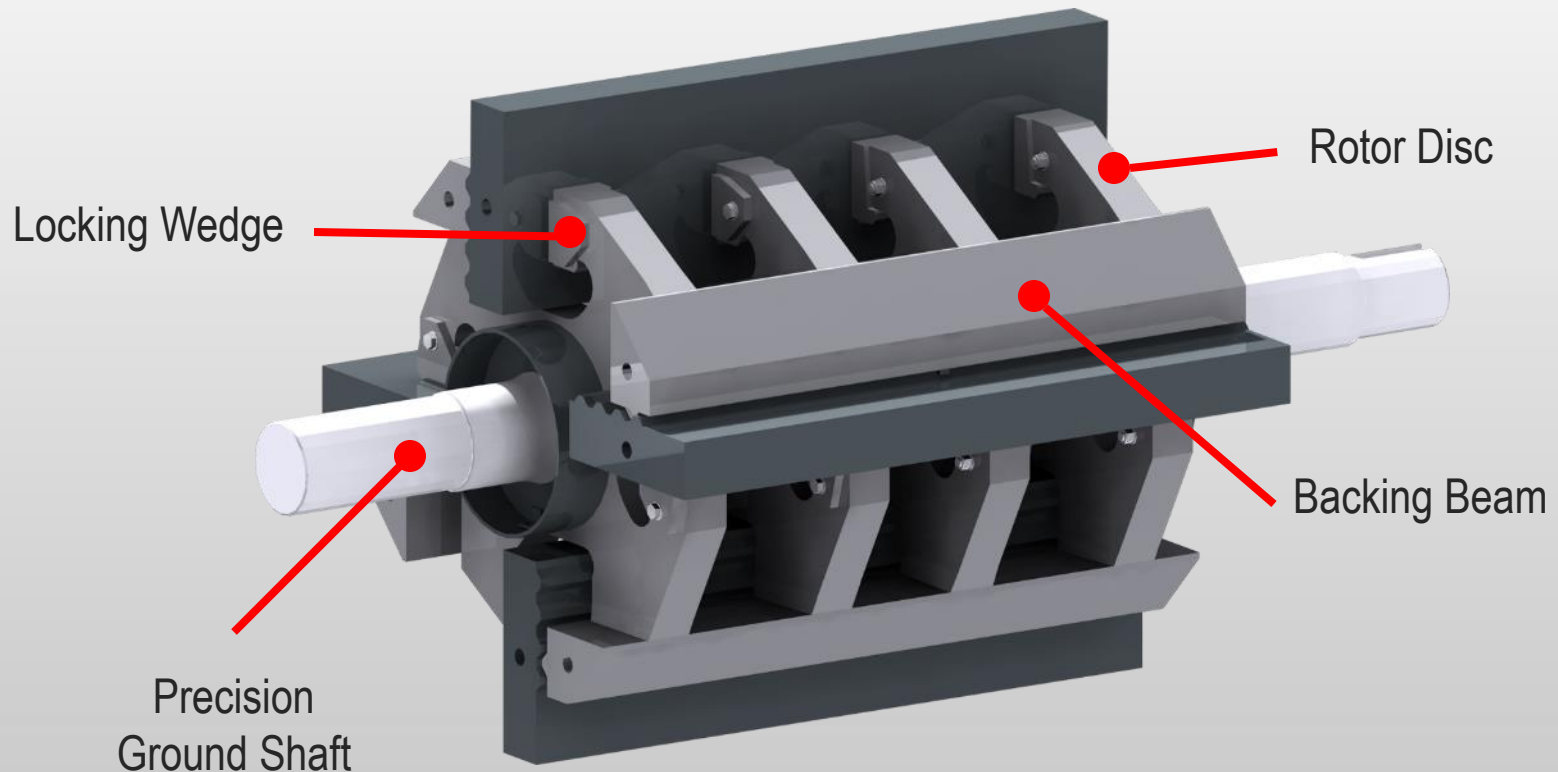
Maximum feed size 600mm (24")



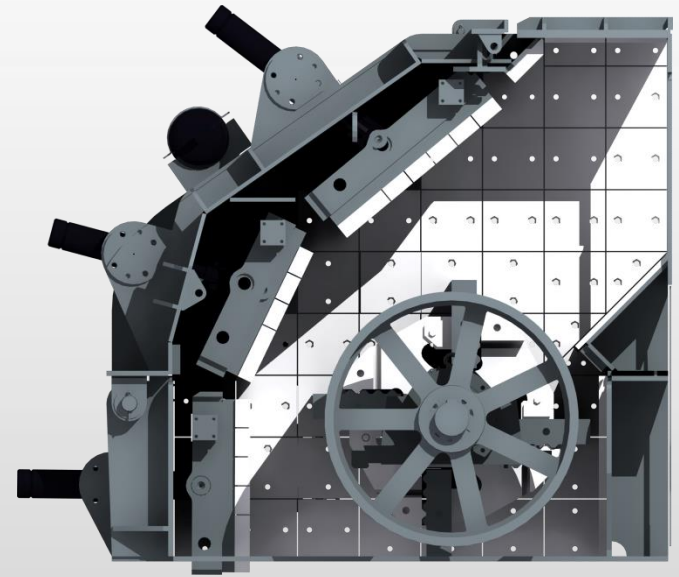
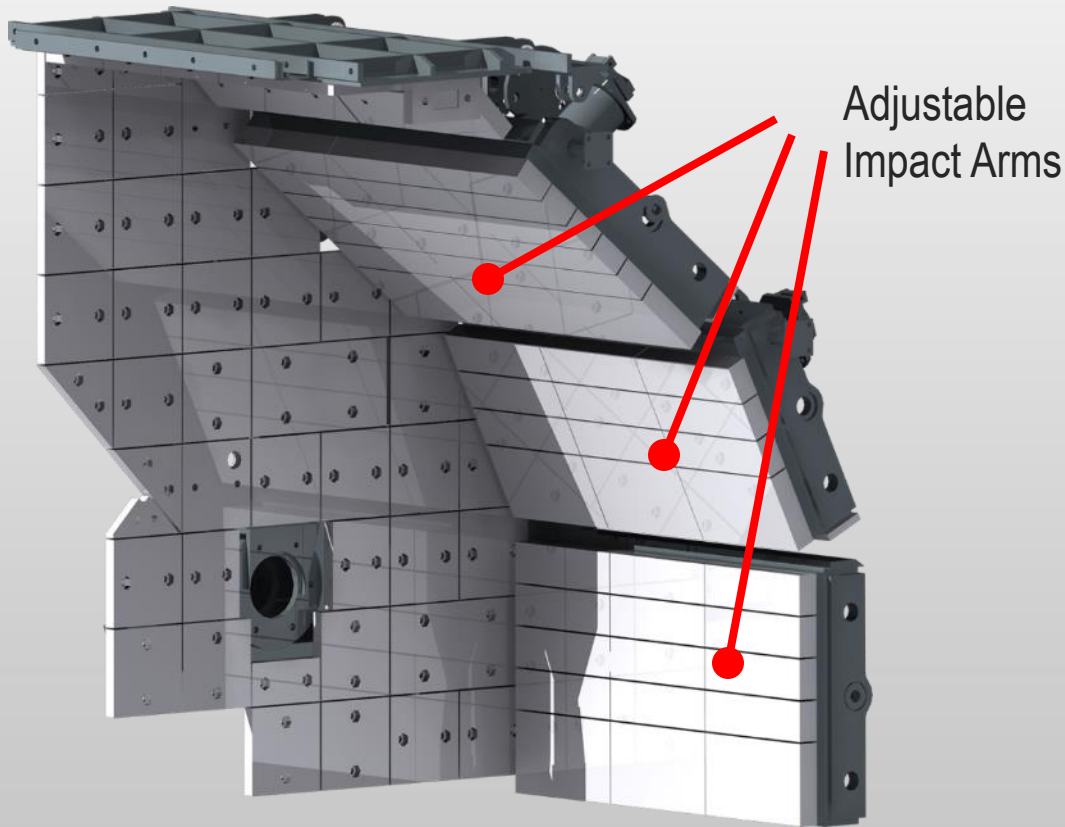
Impact Crusher



Heavy Duty Rotor



Fully-hydraulic Impact Arms



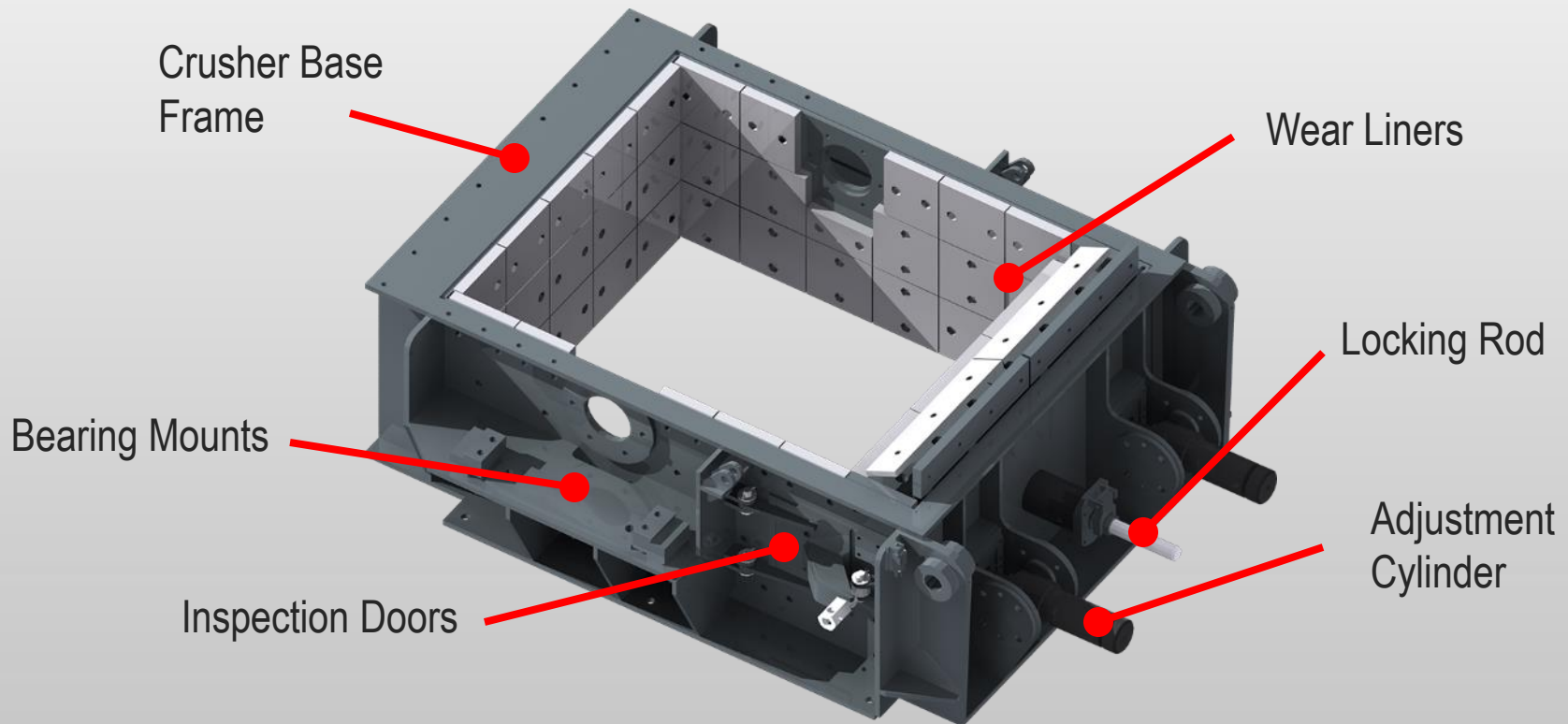
Interchangeable impact plates

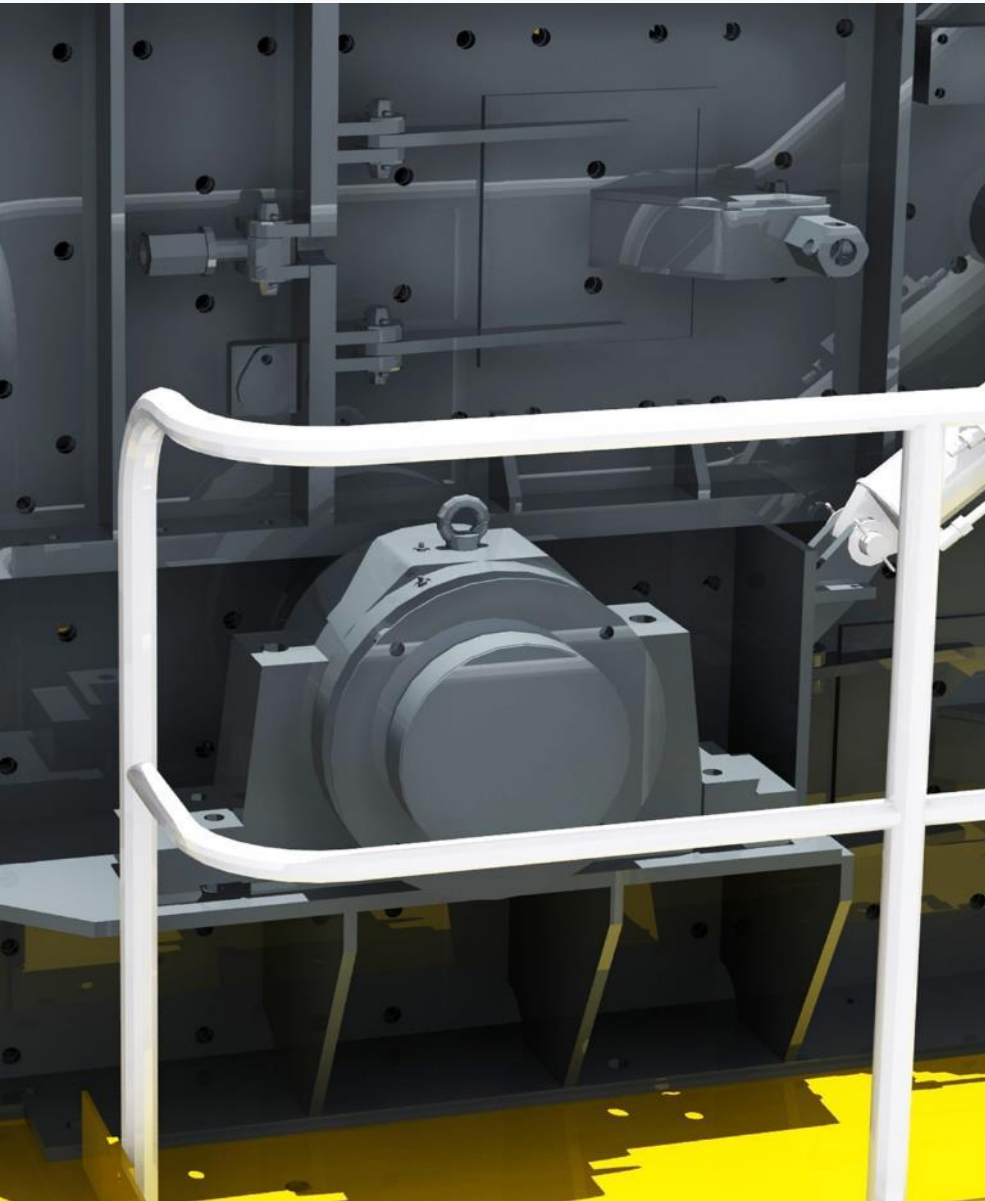
Hydraulically adjustable gap settings
between impact arm and rotor

Overload protection system

Wear Liners

Wear liner plates are cast from wear resistant manganese and have been designed so more are interchangeable and turnable

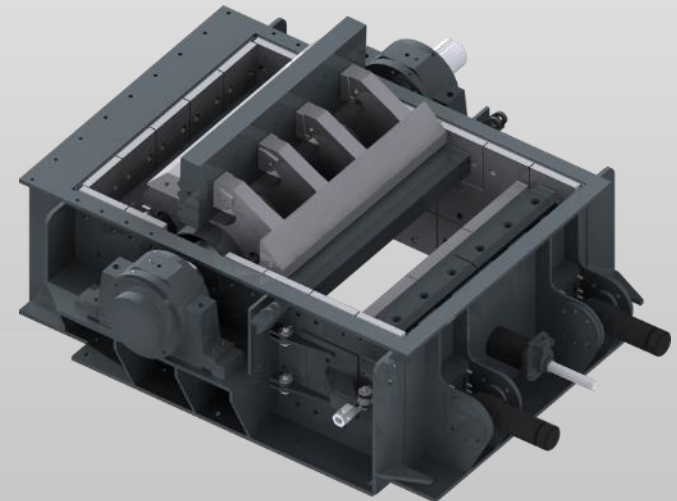




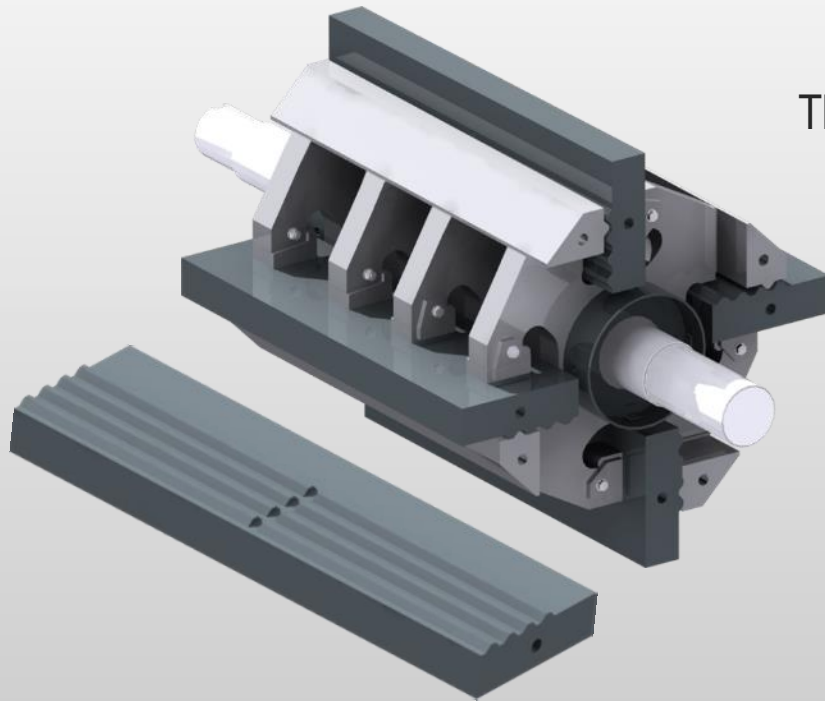
Impactor Bearings

The rotor is supported by bearings mounted in massive solid housings manufactured from steel blocks with self-purging labyrinth seals

Easy maintenance access



Heavy Duty Blow Bars



Four full size manganese blow bars

The rotor arms are equipped with 100mm (4") thick blow bars offering the highest wear resistance available

The blow bar thickness can be increased to suit larger feed sizes vital in recycling

Extended service life through a design that permits the bars to be lifted via the top as wear occurs

Maintenance is safer and more expedient than in other designs



Lifting cradle for blow bar

Impact Crusher Drive



Dedicated oil cooler for fluid coupling |

Quick easy belt tensioning |

Externally mounted and easily maintained |

Smooth start up, no belt slip |

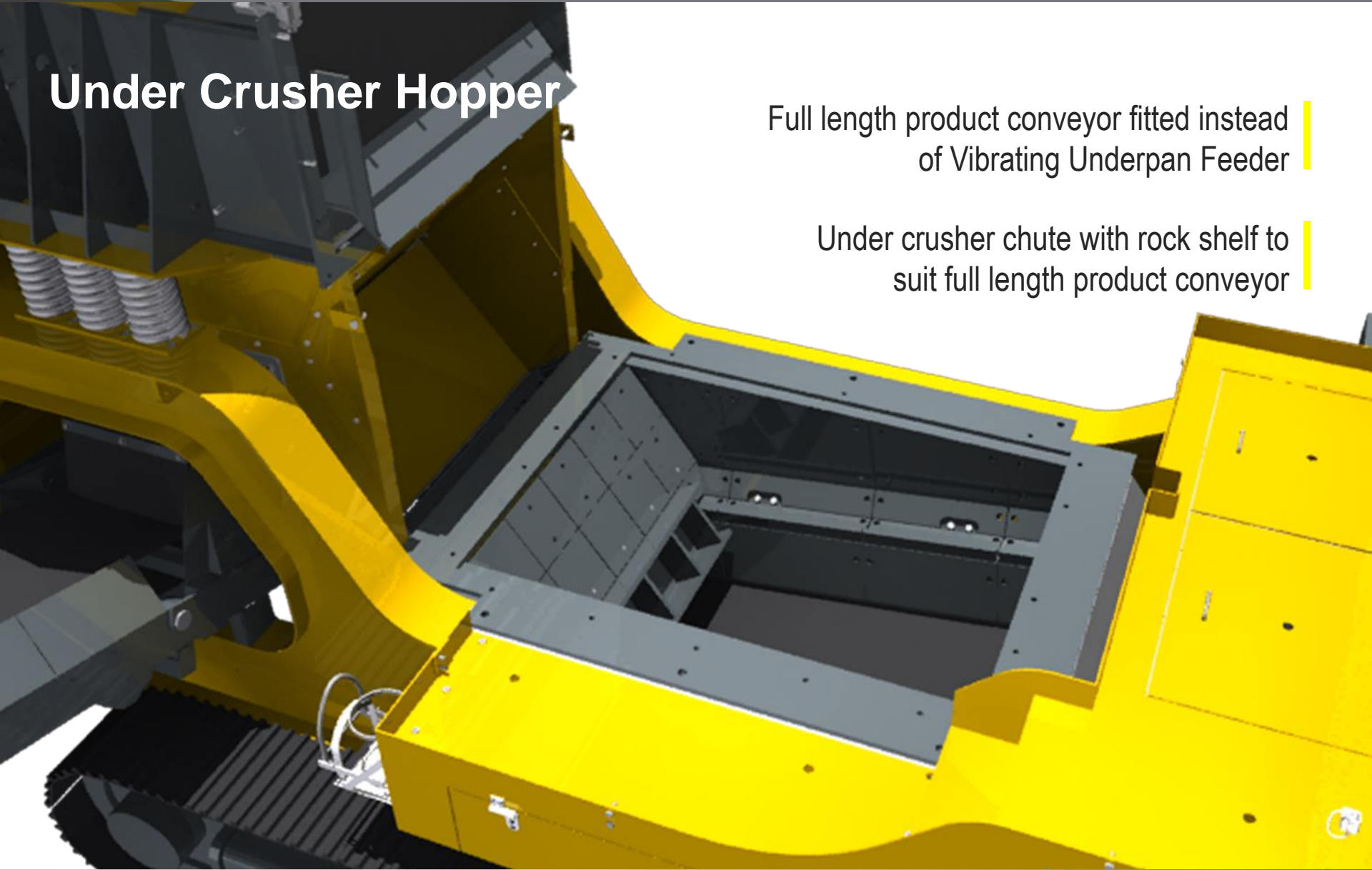
Shock & overload protection |

No friction linings creating longer life utilization |

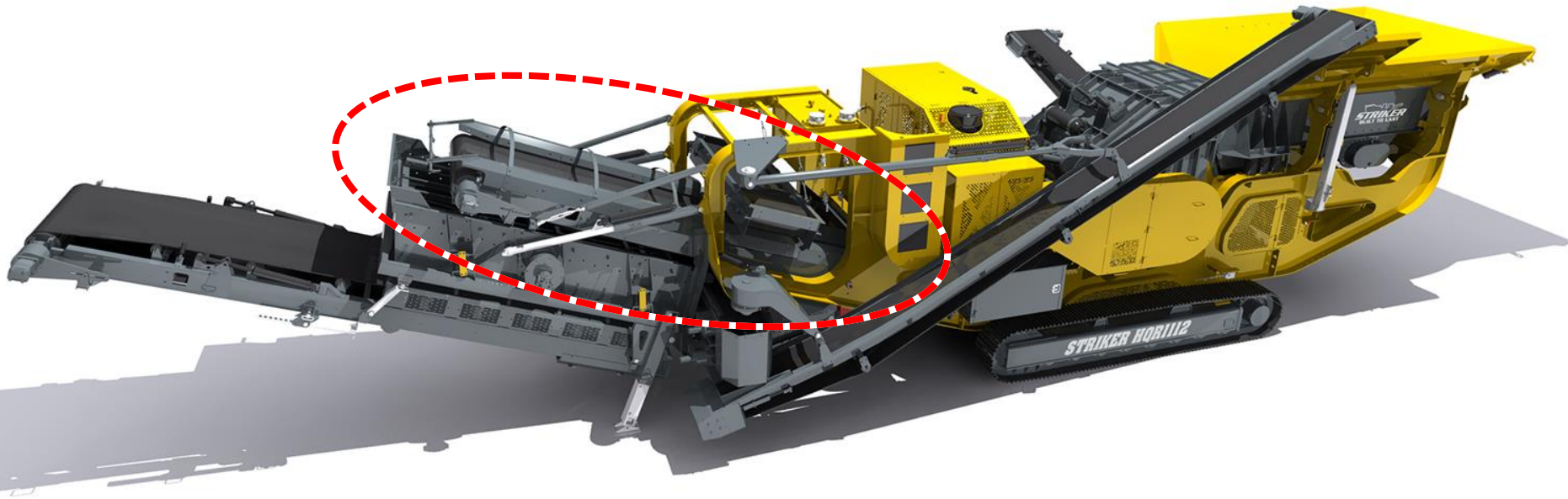
Under Crusher Hopper

Full length product conveyor fitted instead of Vibrating Underpan Feeder

Under crusher chute with rock shelf to suit full length product conveyor



Forward Product Conveyor



Forward Product Conveyor

Heavy duty extra wide belt 1200mm
(47") wide 4 ply troughed conveyor

Fully skirted conveyor belt to reduce spillage
with wear resistant steel liners for durability



Forward Product Conveyor

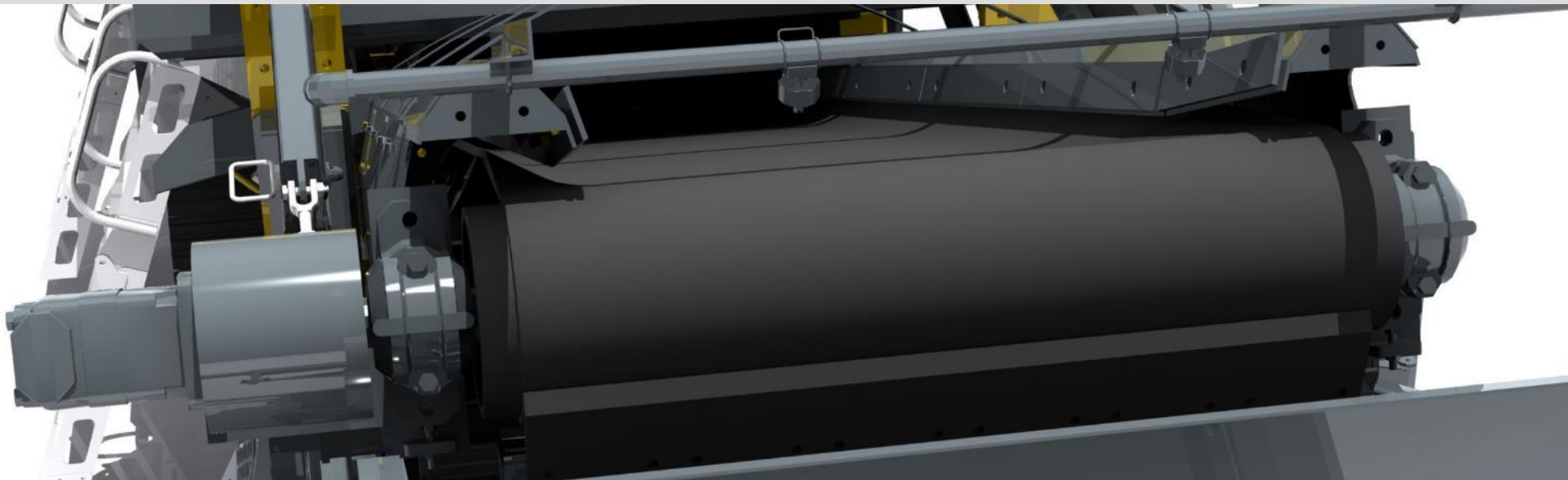
Hydraulic drive at the head drum

Greasing lines to the head drum

Belt cleaner located after the discharge point to ensure that sticky material is removed preventing tracking issues

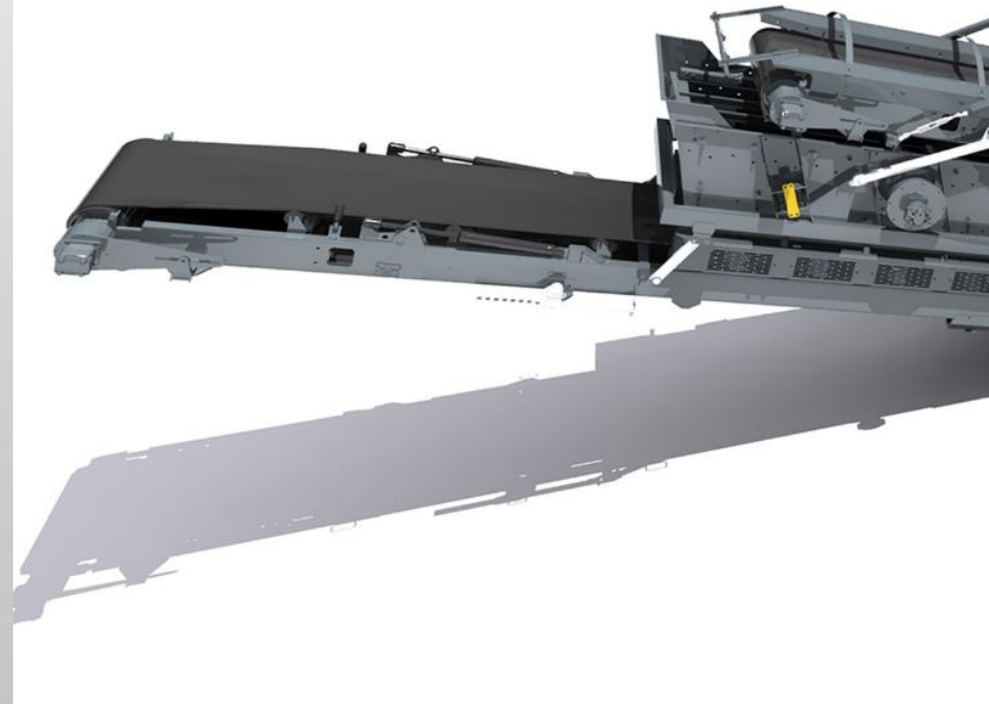
Self-aligning spherical roller bearings

Lagged head drum to prevent belt slippage



Fines Product Conveyor

- | 1200mm (47") wide
- | 3 ply belt



Conveyor Guards

- Quick release system for maintenance

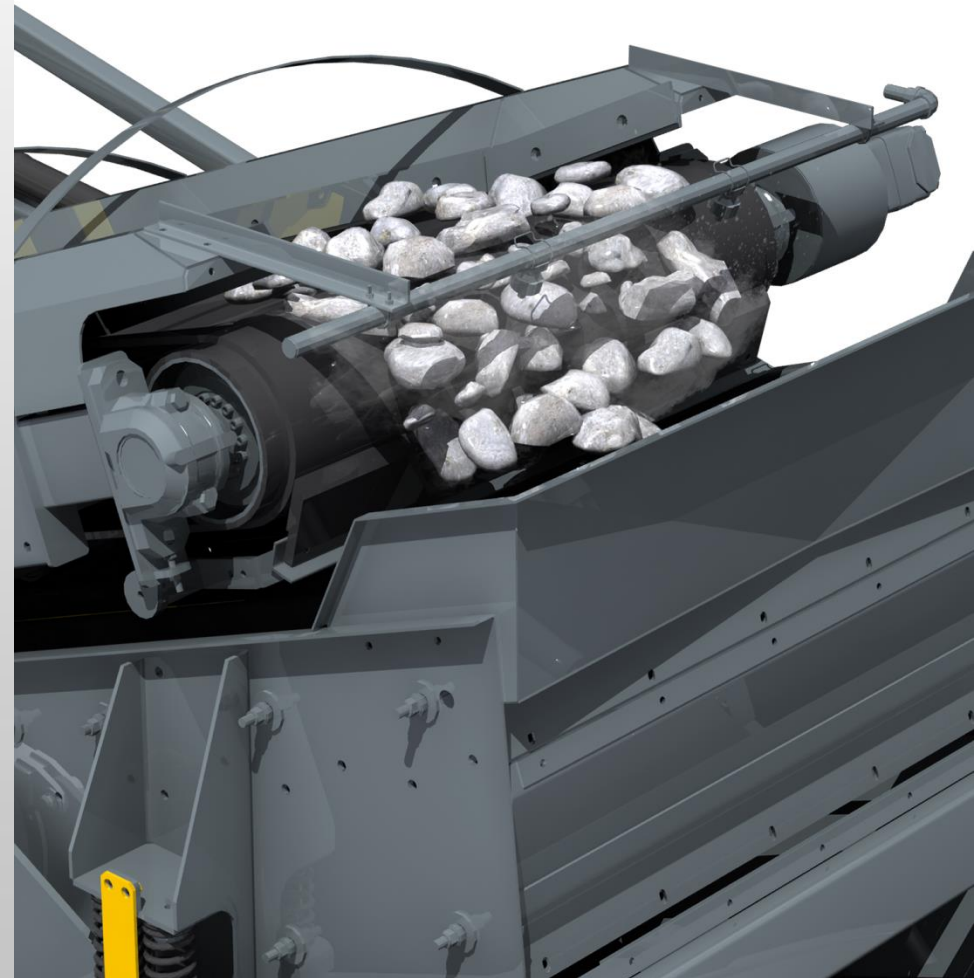
- CE Compliant

- Safety against moving & rotating parts



Dust Suppression

- Environmentally friendly on-board solution to dust control from the impact crusher
- Dust Suppression sprays and manifold
- Dust Suppression in two isolated locations
 - 1) Impact crusher discharge chute
 - 2) At the top of the product conveyor



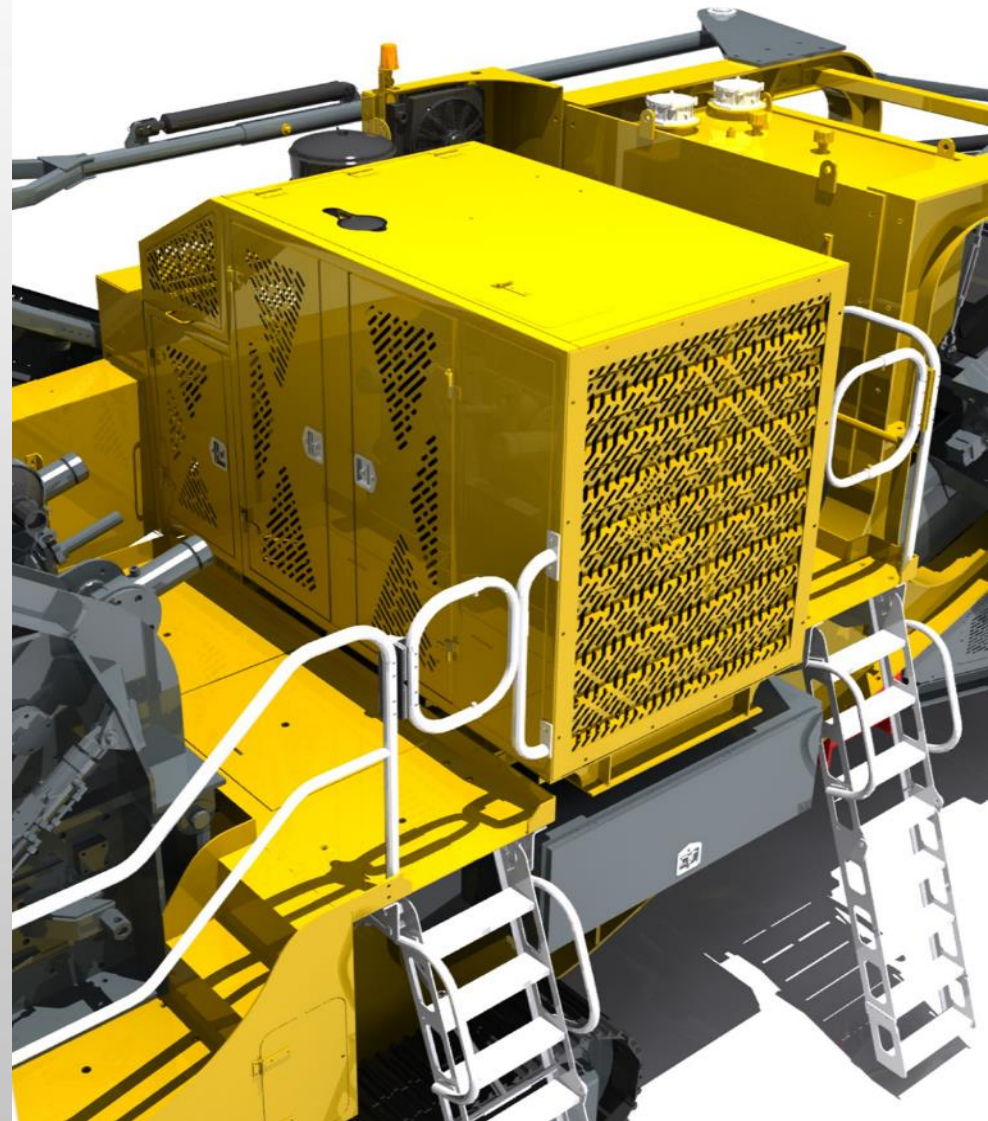
Central Located Greasing

- | Central greasing point
- | Robust, durable greasing lines, not plastic
- | Located at ground level
- | Saves on maintenance time



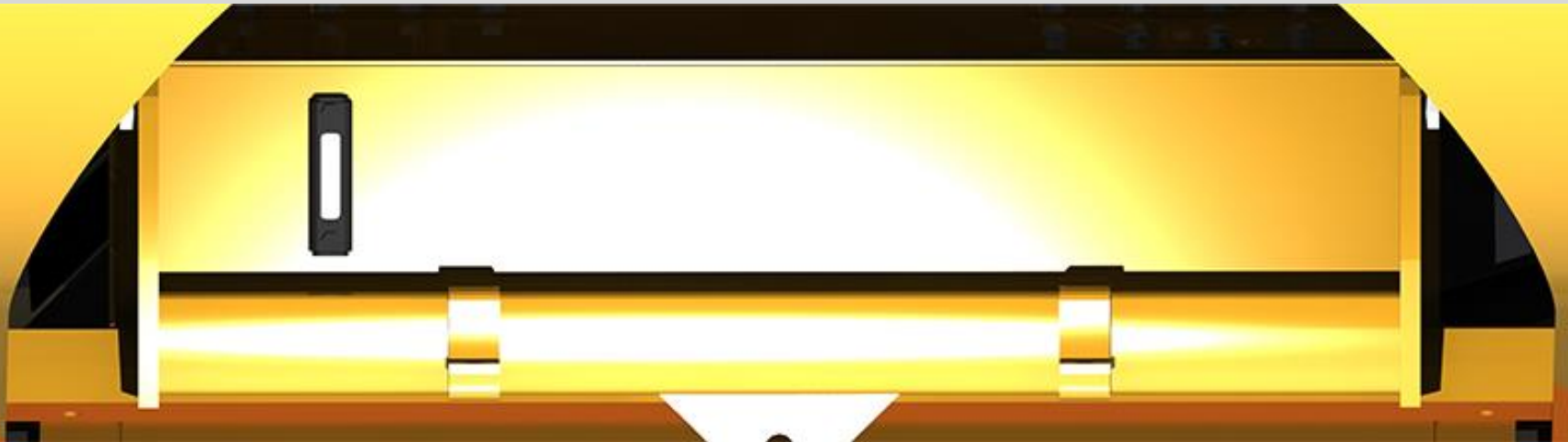
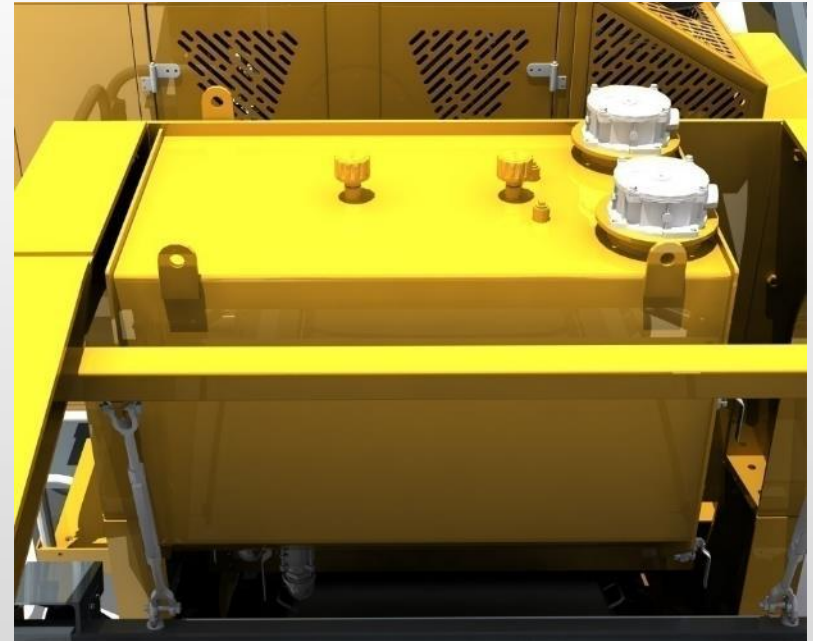
Power Pack

- Powered by a CATERPILLAR® C9 ACERT Tier 3 / Stage 3A engine rated (265kW @ 2200rpm)
- Engine complies with all current emission laws
- Hot climate oils (Recommended for ambient temperatures between +15°C to +50°C)
- Easy access for maintenance via 3 panel doors and generous working platforms
- Easy to maintain, reliable and efficient
- Load sensing hydraulic pumps to maximise fuel efficiency
- 38 L/hr (10 G/hr) up to 6.5 tons of crushed product per litre of fuel consumed (25 tons/G)



Fuel & Hydraulic Tank

- 640 litre (141 gal) standard capacity fuel tank
- 600 litre (132 gal) standard capacity hydraulic tank
- Hydraulic oil filtration system and air filter



Hydraulic Components

Easy access to hydraulic components for maintenance

Simple ON/OFF hydraulic blocks

Double hydraulic coolers

The hydraulic system powers:

Crusher

Tracks

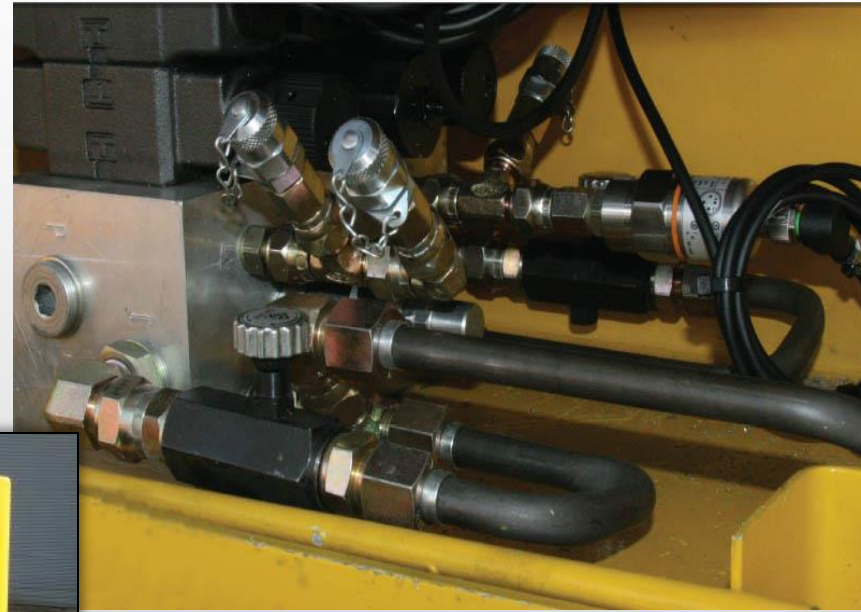
The hopper wings and securing pins

Forward & side conveyors

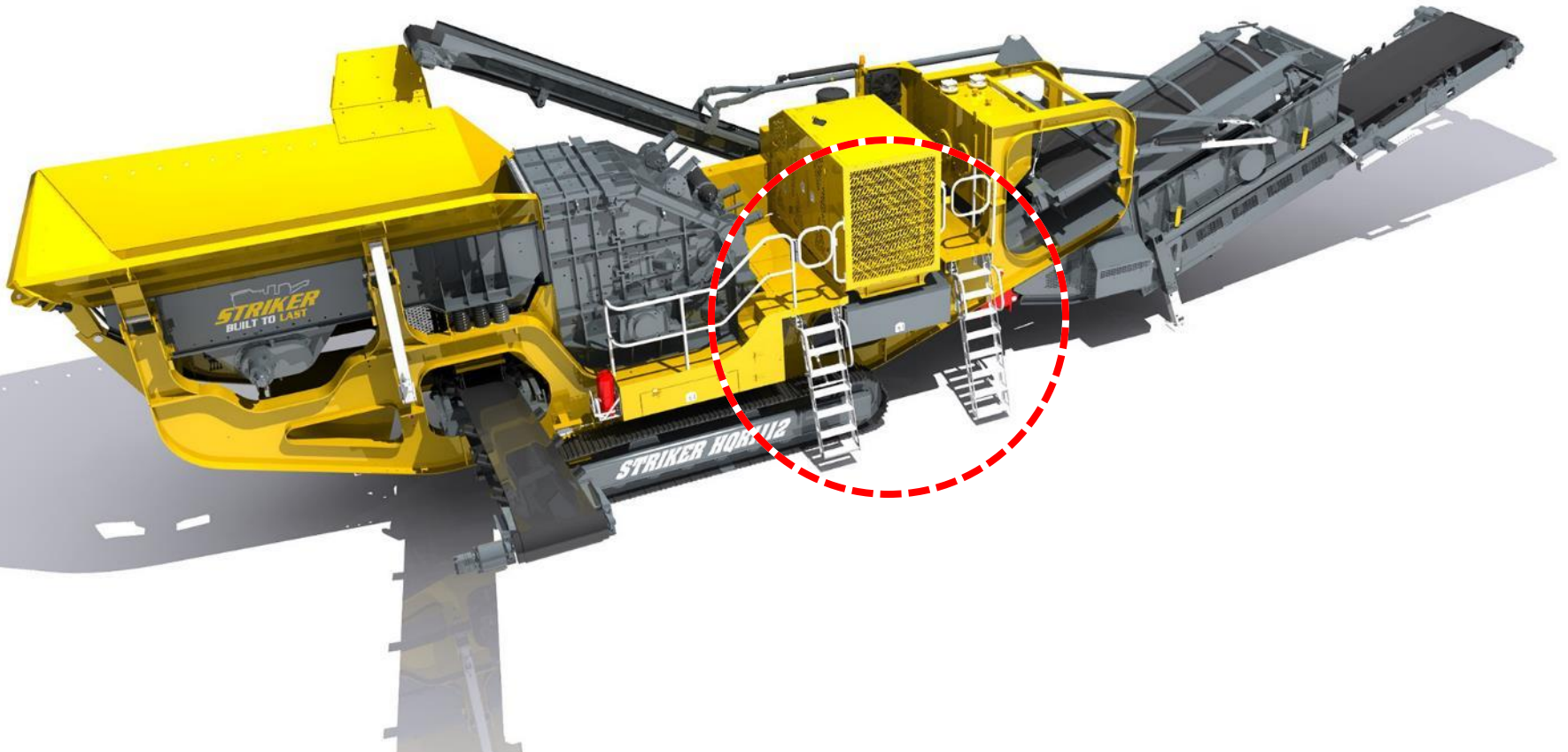
Vibrating Grizzly Feeder

Optional screen & recirculation conveyor

Forward support legs



Controls



Controls

- Simple user friendly screen
- Ability to change the displayed language
English, Mandarin, Bahasa, Afrikaans in
the HMI settings
- Clearly marked diagrammatic display
- Ability to switch between metric and standard
imperial units of measurement
- Rugged CAN based modular I/O
- Low voltage 24V system
- Sealed IP54 cabinets to prevent the ingress
of dust & water



Remote Control Unit

- | Battery level indicator (on the display)
- | Signal strength indicator (on the display)
- | Proportional control of the tracks
- | Steer mode
- | Tramming mode
- | Feeder ON/OFF and speed control
- | Charging via a cigarette lighter plug 12/24vdc
- | A charging/storage dock mounted on the machine so it's always on hand and full charged



Battery Maintenance Access

Service access to the batteries

Location for isolation during maintenance and welding on plant:

Two Isolator available:

- 1) Battery isolator
- 2) Starter motor isolator for testing controls & electrical system with the engine isolated



Manual Hydraulic Controls

Clearly marked manual hydraulic levers power the following and are easy to operate and allow for quick set-up of the plant:

Hopper sides

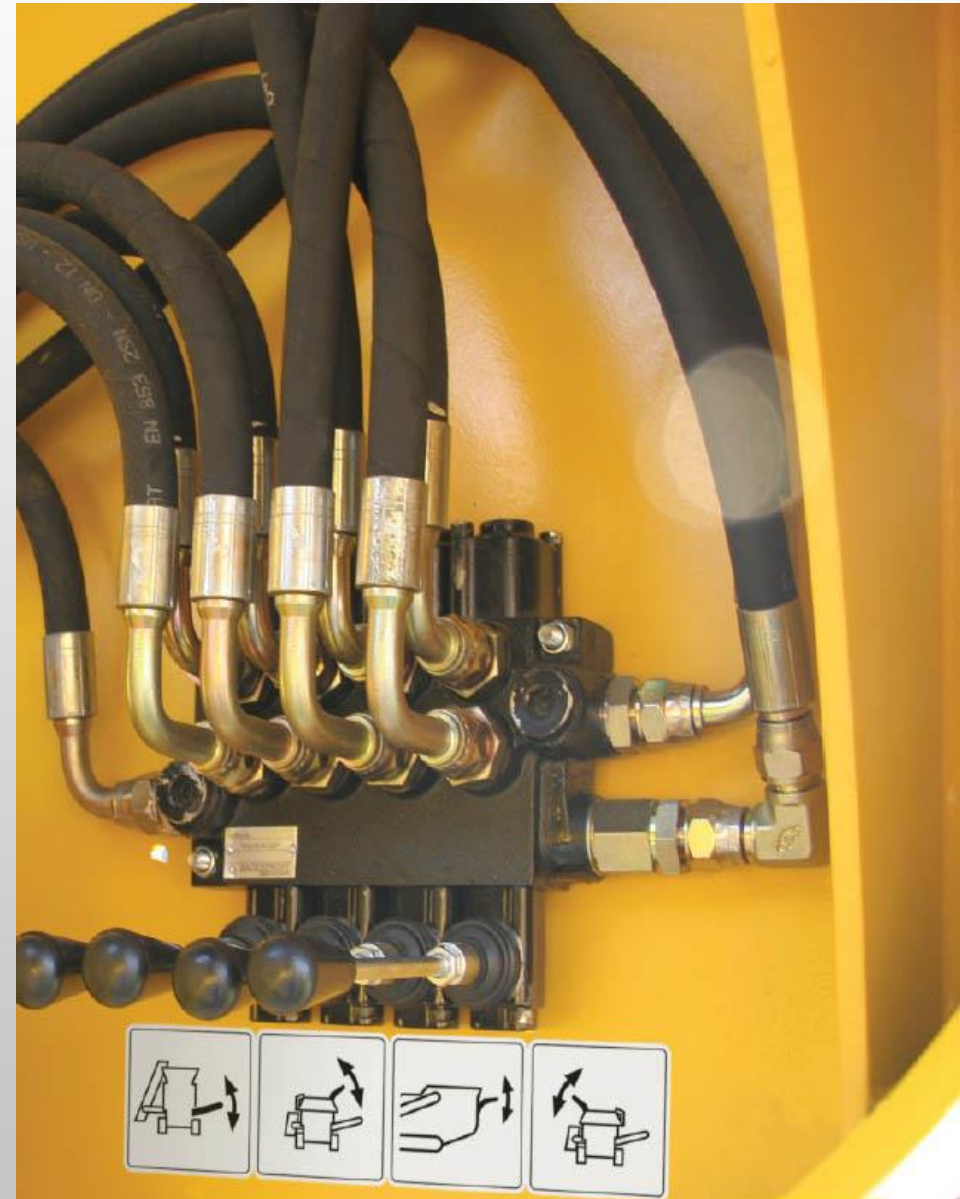
Hopper securing pins

Side discharge Conveyor

Screen

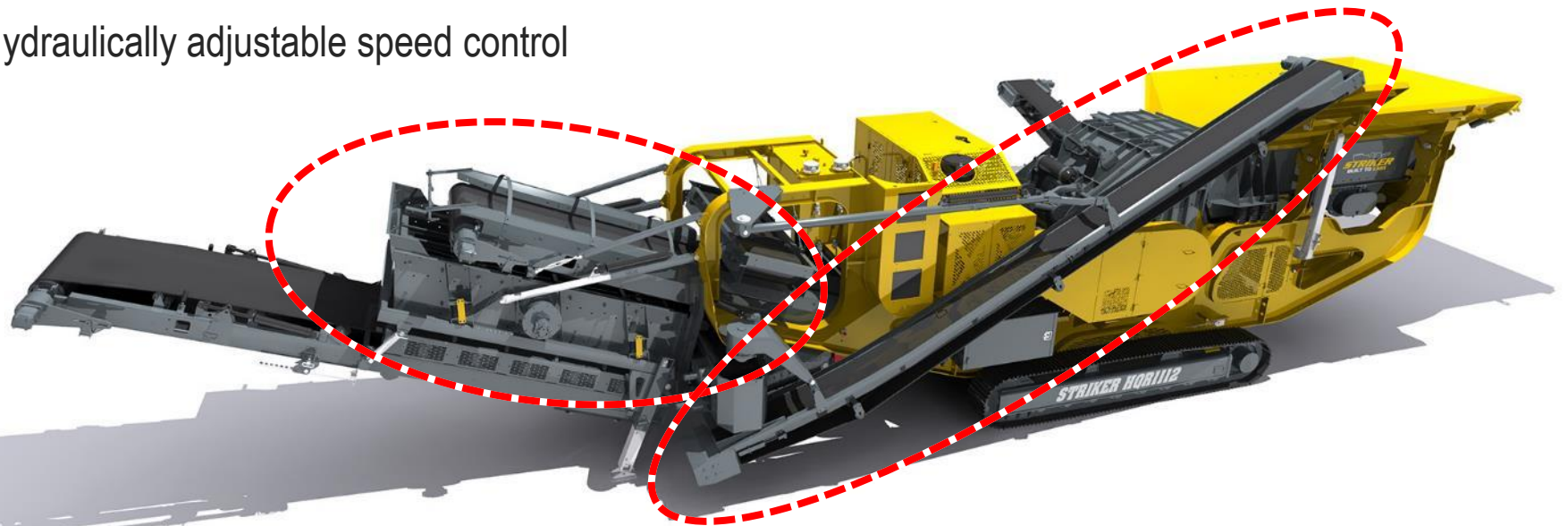
Recirculation conveyor

Forward support legs



Recirculation Conveyor

- | 500mm (20") wide
- | Hydraulically adjustable speed control



Screen

The screen box is a:
Hydraulic operated single deck vibrating screen,
3350mm x 1525mm (11ft x 5ft)

Detachable single deck vibrating screen

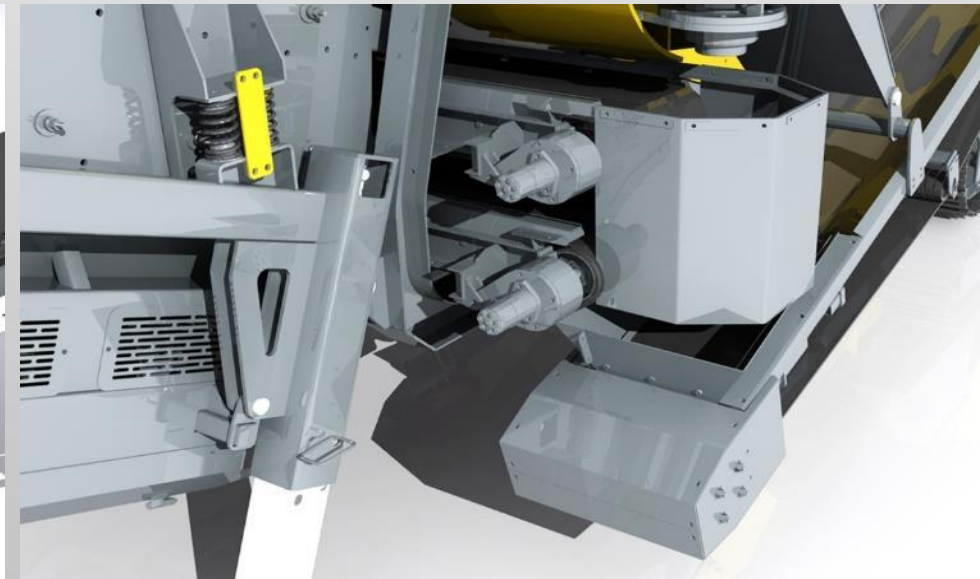
Top Transfer Conveyor: 500mm (20") wide

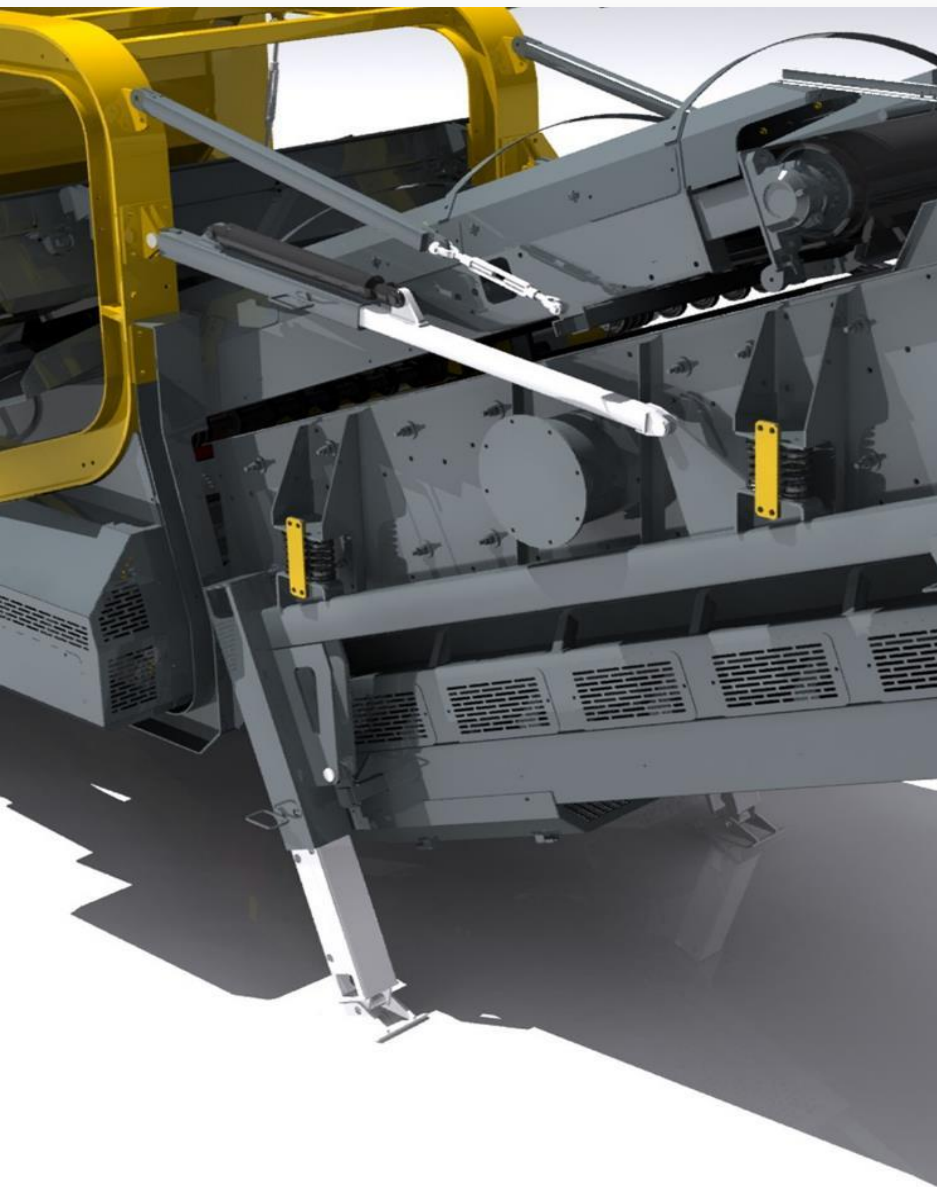
Hydraulic tilting oversize recirculation
conveyor that stows for transport

Added ability to produce a graded product

Top deck aperture mesh – Max size 45mm
(1.8") Standard

Negates the need for a separate screen

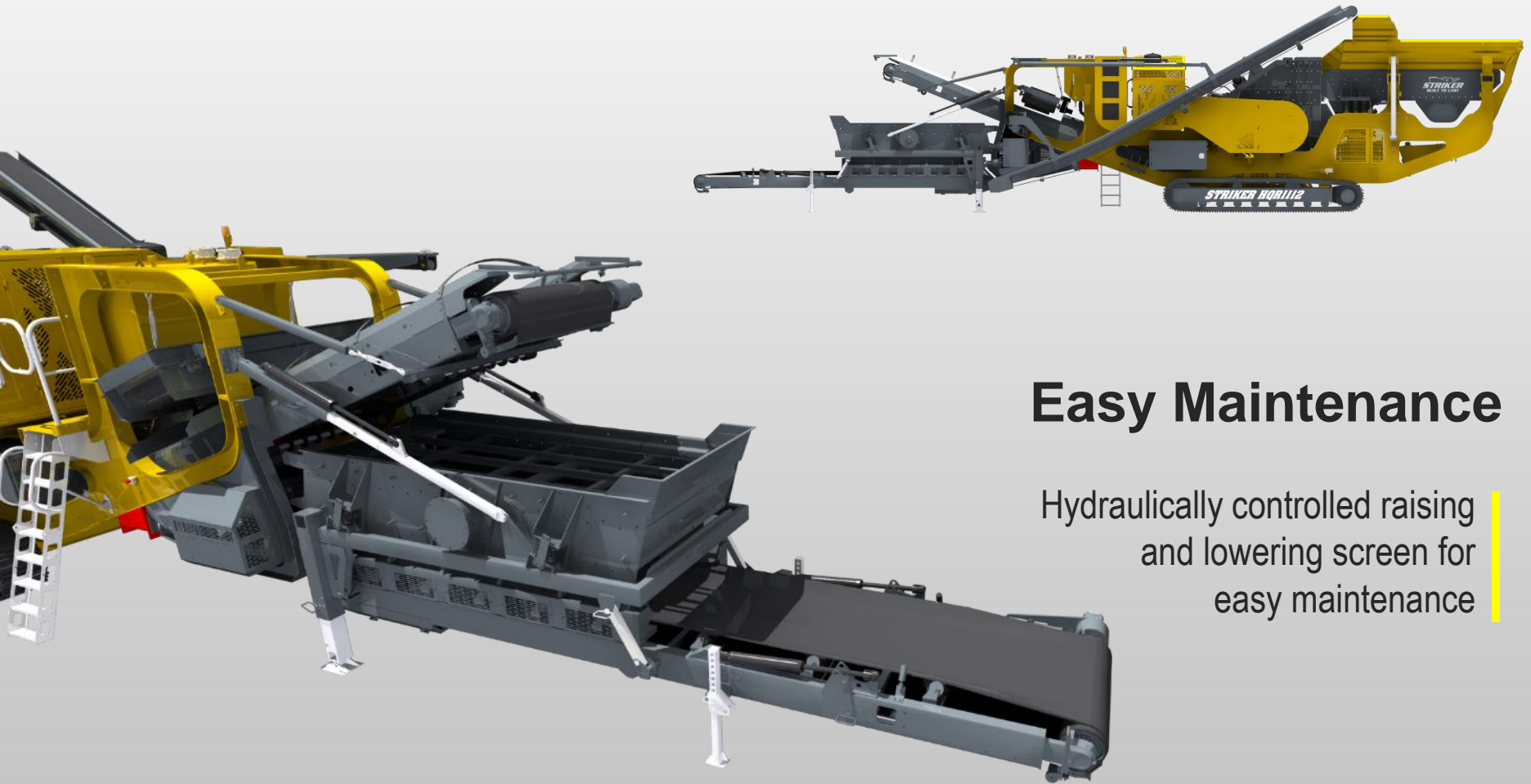




Forward Support Legs

Hydraulically controlled raising and lowering support legs for operational stability

Manual control lever for operation



Easy Maintenance

Hydraulically controlled raising and lowering screen for easy maintenance

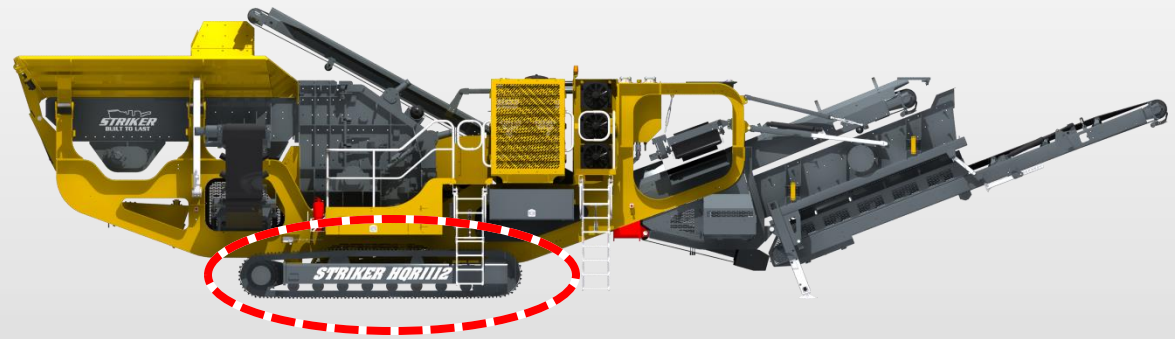
Tracks

Hydraulically driven
crawler tracks

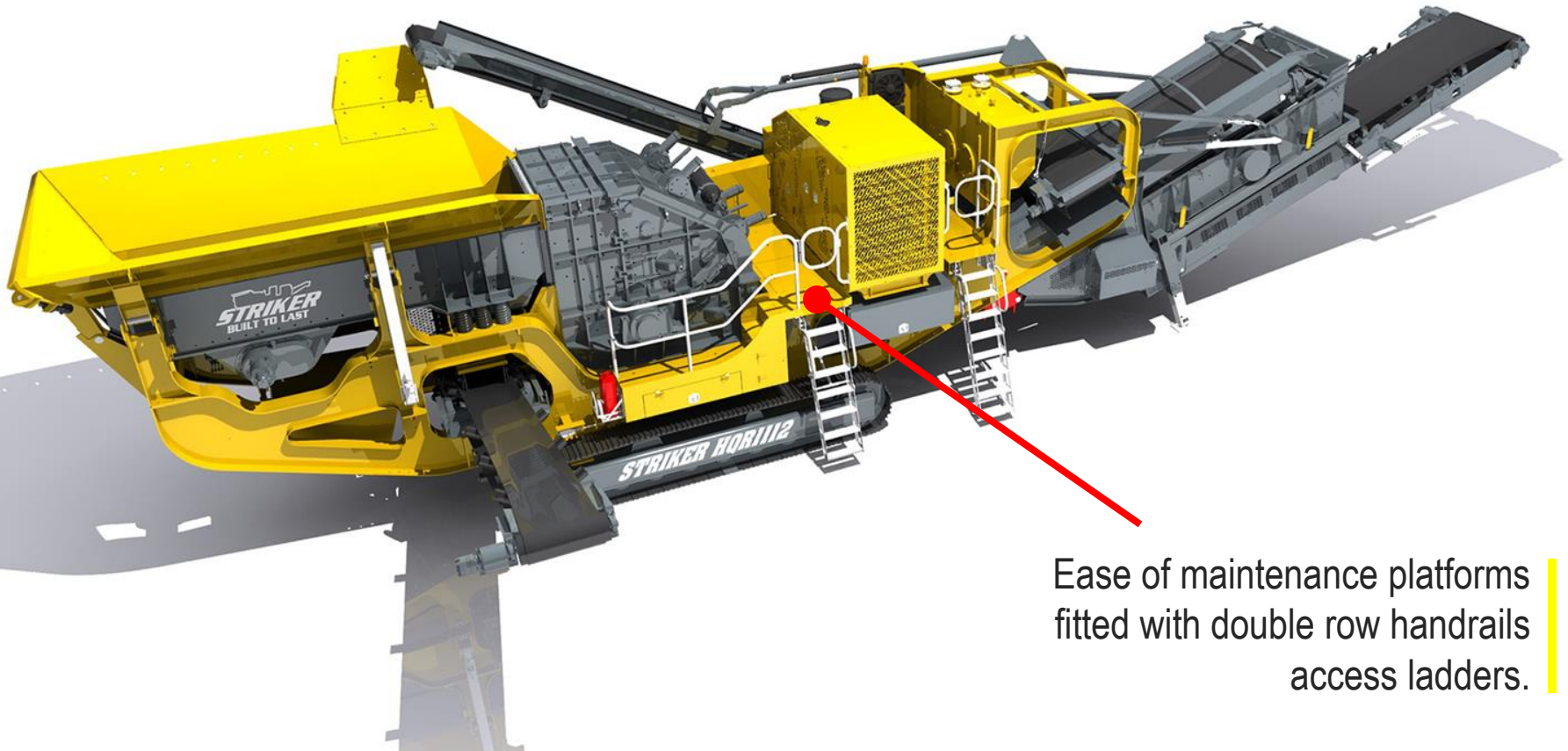
Track centres 3840mm (12'7")

Track shoe width 400mm (1'4")

Heavy duty 2 speed



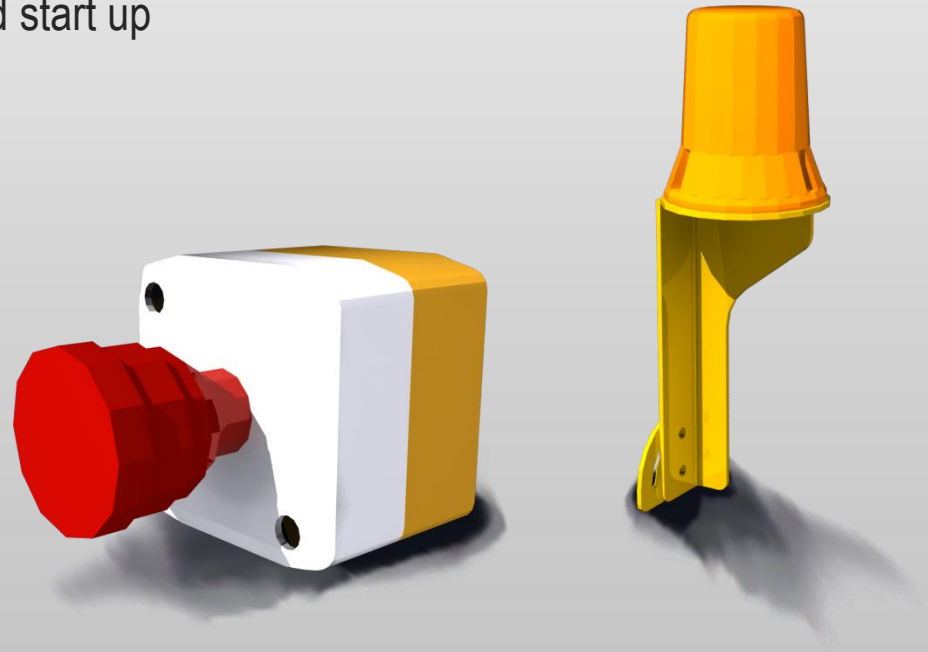
Platforms



Ease of maintenance platforms fitted with double row handrails access ladders.

Machine Safety Aspects

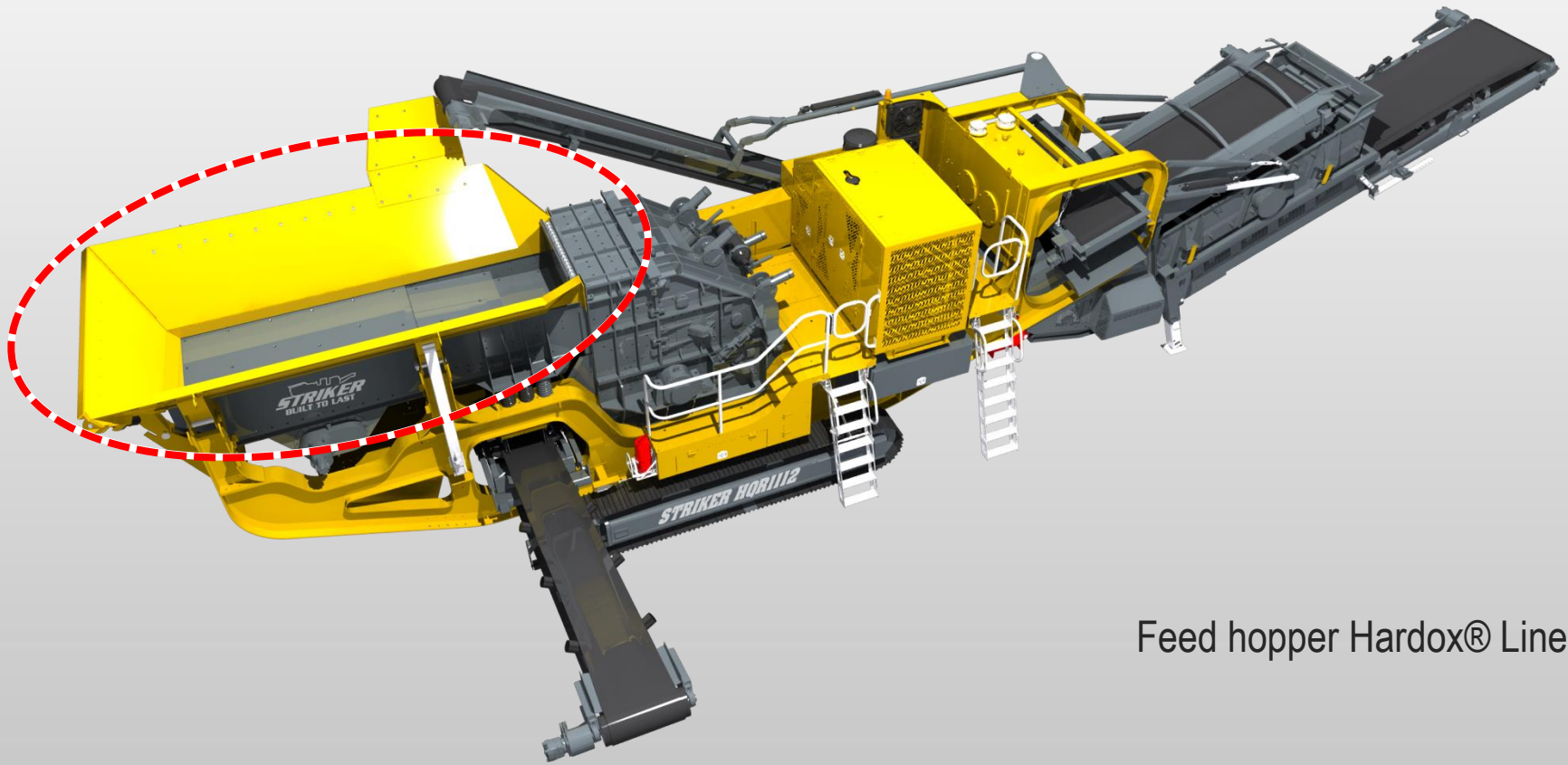
- | Nip Point guarding
- | Central located greasing
- | Engine start delay and siren
- | Warning siren to alert the machine tracking and start up
- | Engine emergency stops



Options

- | Wear resistant steel hopper liners
- | Feed hopper extension wings
- | Centralised lubrication system
- | Product conveyor dust covers
- | Impactor high speed conversion
- | Hydraulic water pump
- | Overband magnet
- | Side discharge conveyor
- | Pan feeder under crusher
- | Arctic package for operating conditions – 20 ° C
- | Desert package for operating conditions + 50 ° C
- | Plant lighting tower
- | 3 meter air extension kit for engine air cleaner
- | Paint

Feed Hopper (Option)



Feed hopper Hardox® Lines

Feed Hopper Extension Wings (Option)

- Heavy duty wear resistant steel feed hopper construction
- Hydraulically operated ground level folding side and rear wings
- Reinforced box section webs
- Rapid set up time



Grizzly Feeder (Option)

Grizzly cartridges with 60mm (2.4") nominal spacing

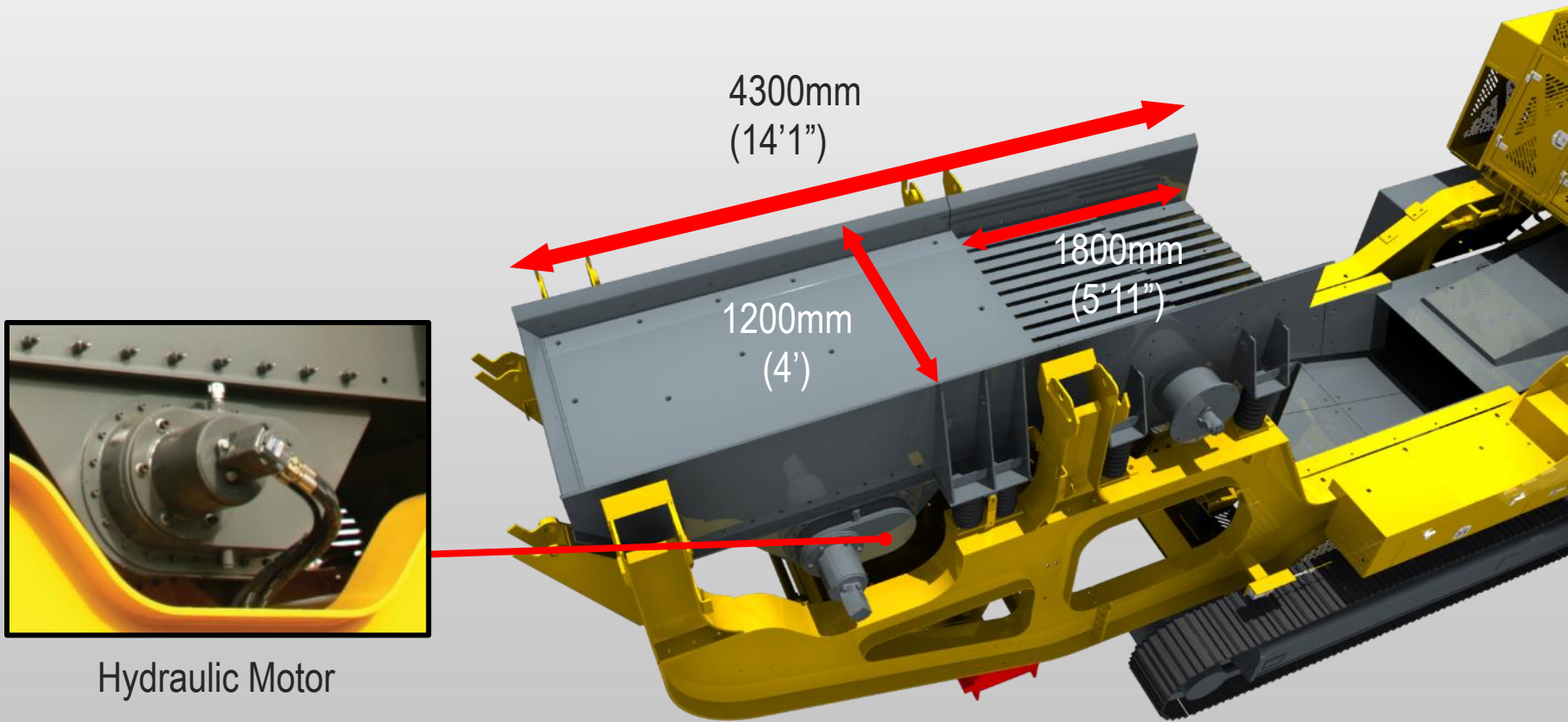
2 deck live Pre-screen c/w Pan Feeder instead of Vibrating Grizzly Feeder, Hydraulic folding feed hopper sides and rear hydraulic locking mechanism

Top deck mesh cartridges:
Please Specify Mesh Size:

Wire mesh for pre-screen (Please specify size:
10, 20, 30, 40, 50mm)



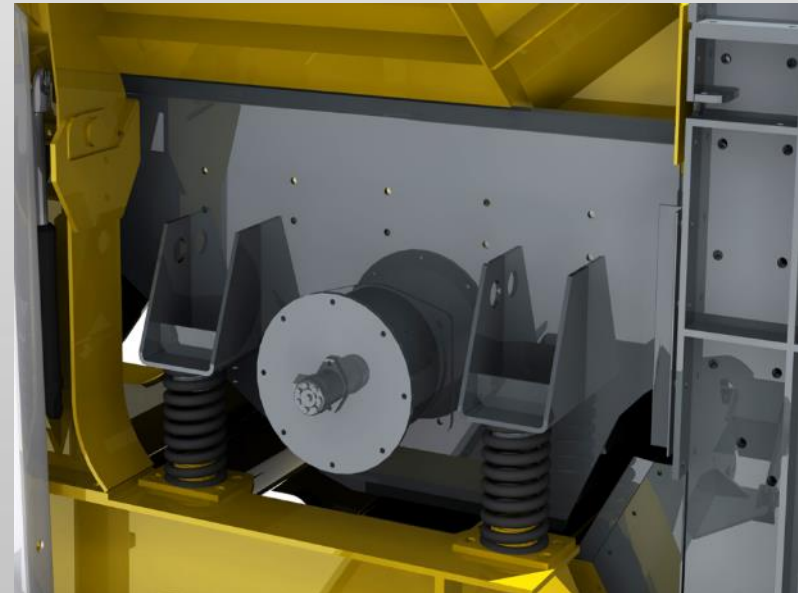
Independent Grizzly (Option)



Hydraulic Motor

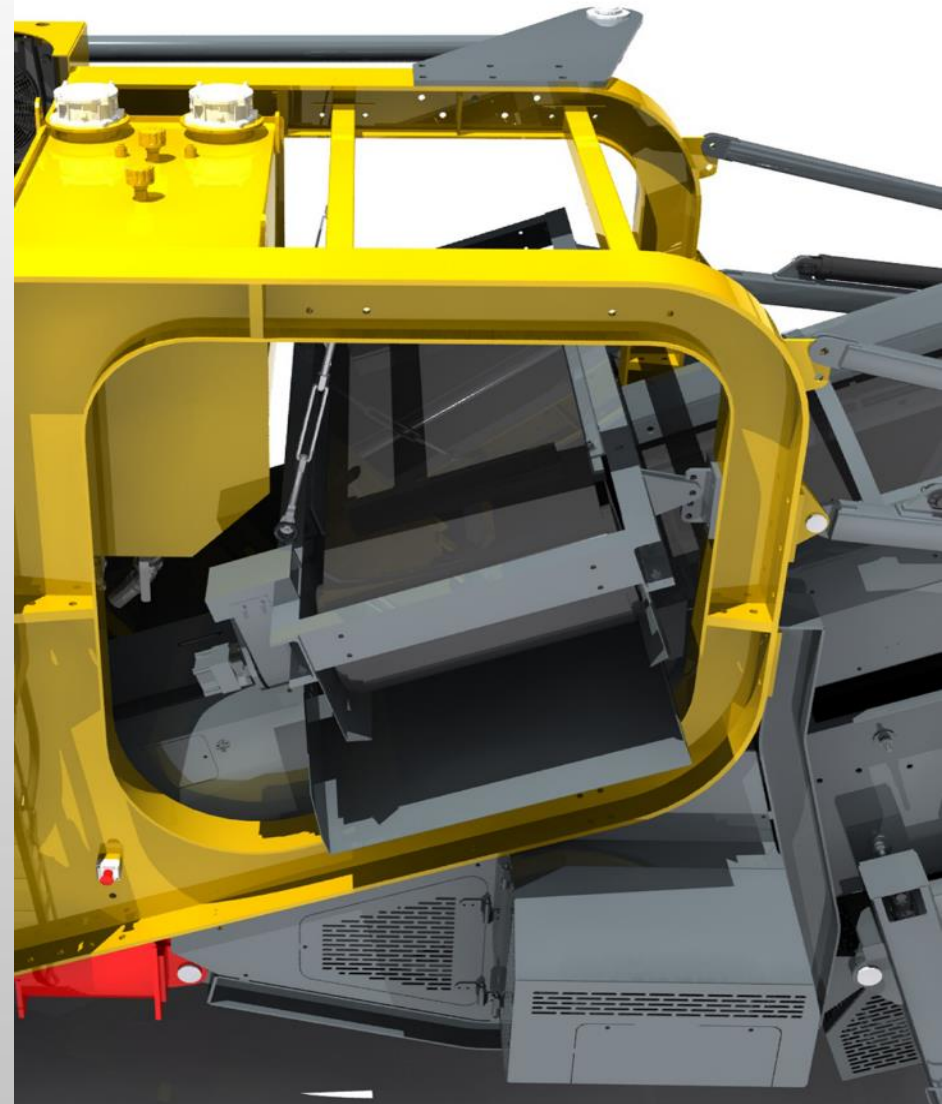
Independent Grizzly (Option)

- Independent vibrating double-deck pre screen ensures effective screening of fines for optimal final grain quality
- Reduction of wear in the crusher area by diverting the medium grain directly to the discharge chute
- Simple and safe replacement of screen mesh in upper and lower deck
- Reduction of bridging due to leveling of the feed material before the crusher
- Comfortable discharge height of side discharge conveyor avoids damage by wheel loader



Overband Magnet (Option)

- Designed to separate any steel material from the crushed rock or demolition waste
- Variable belt speed
- The magnet is height adjustable and can be lowered or raised to suit any application
- Magnet preparation c/w hosing, shedder plate and mounting bracket
- Single Pole Magnet c/w hosing, shedder plate and mounting bracket
- Twin Pole Magnet c/w hosing, shedder plate and mounting bracket



Stacker Outlet (Option)

To run Striker radial stacking conveyor



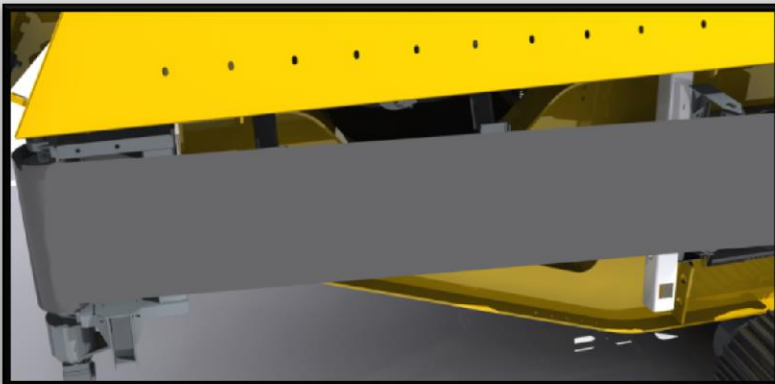
Side Discharge Conveyor (Option)



The by pass chute transfers removal of fines on to the side discharge conveyor

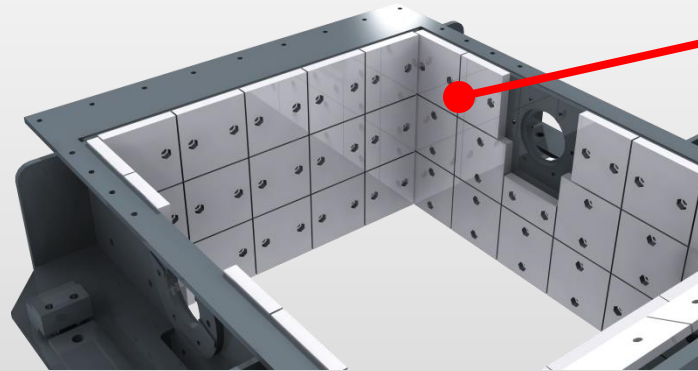
2094mm (82") discharge height, or
3600mm (142") discharge height

600mm (24") wide belt



Folds in uniquely under the hydraulically folding side hopper when in transportation

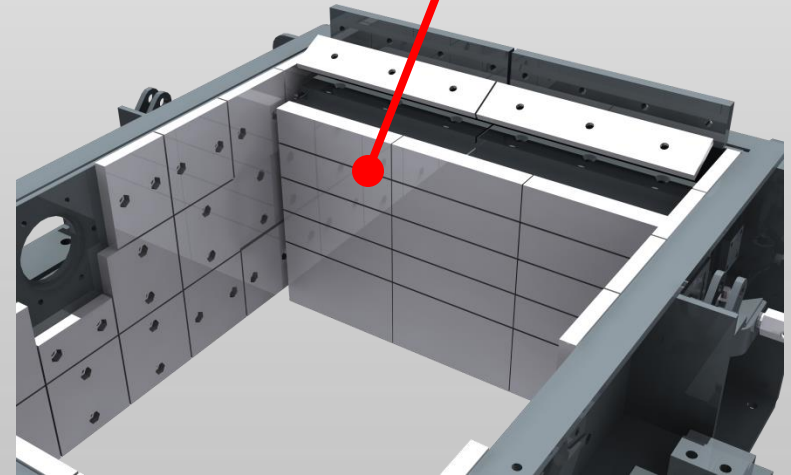
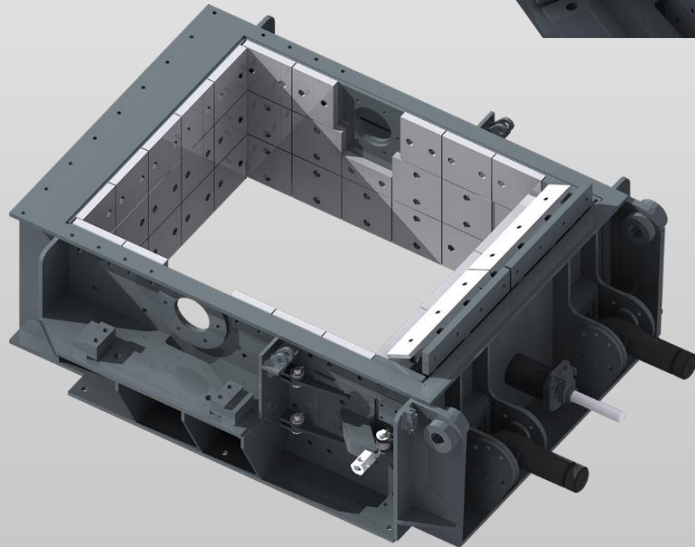
Wear Liners (Option)



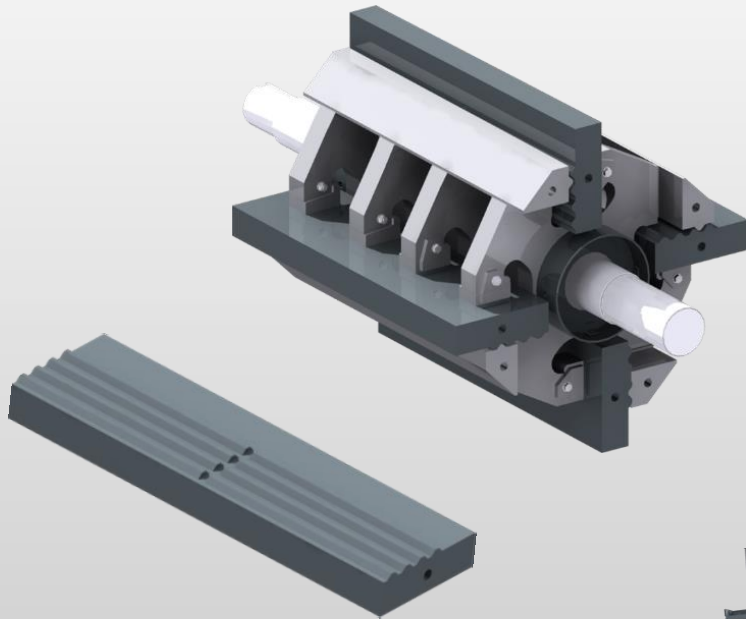
Chrome body liners

Chrome impact plates

Hardox body liners



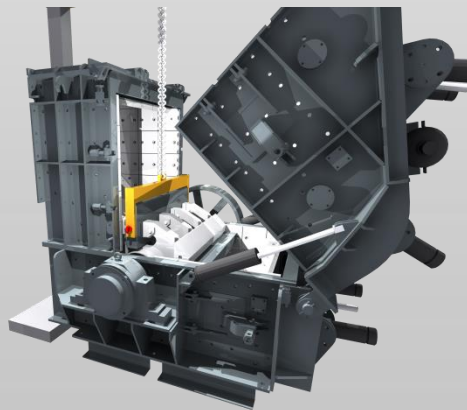
Heavy Duty Blow Bars (Option)



Two full size chrome and two half size bars

Four full size chrome blow bar

Crane for blow bar change





Pan Feeder (Option)

Provide high production and extended service life in a wide range of applications

High strength structural design based on use in the most extreme conditions and applications

Fitted with wear resistant liners

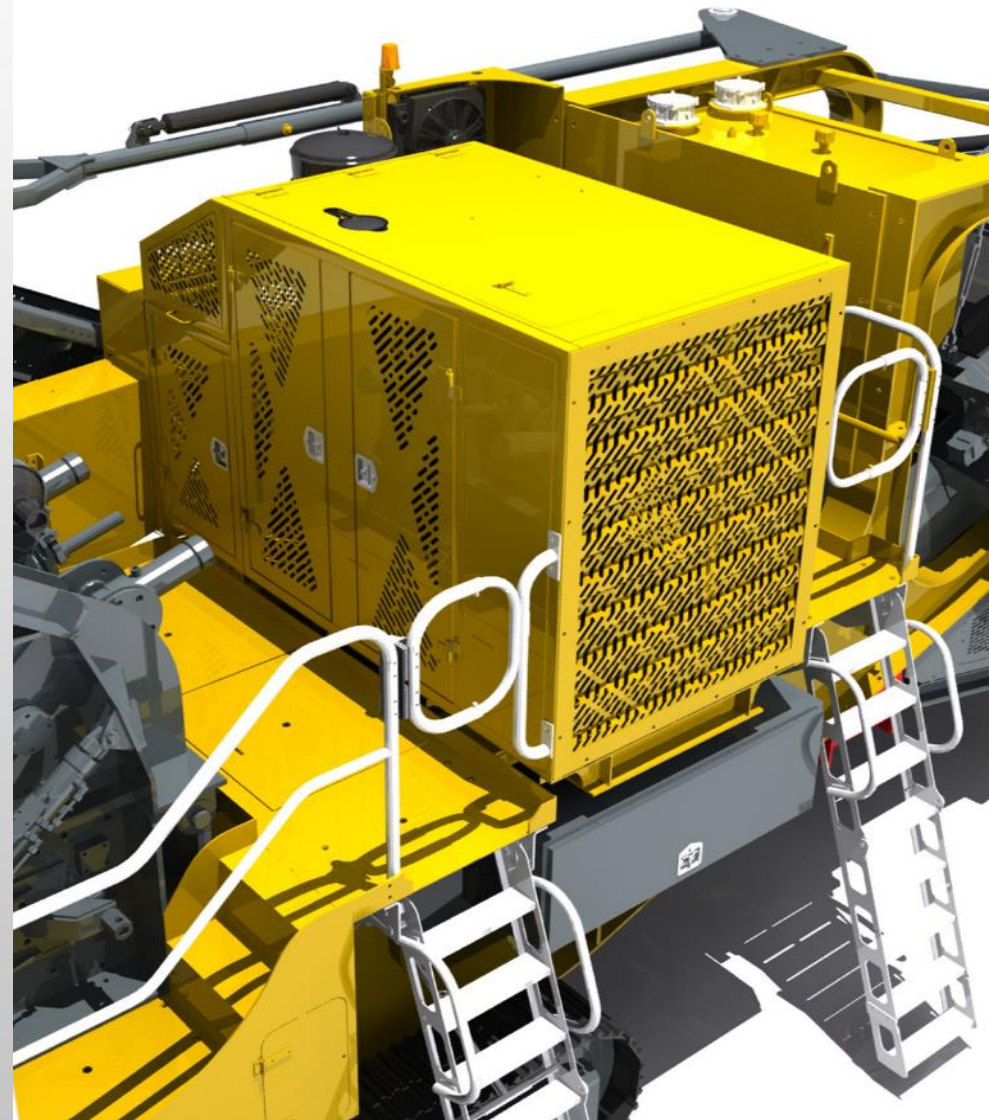
Power Pack (Option)

Tier 4F / Stage 4 CATERPILLAR® C9 LRC engine rated 265kW @ 2200rpm

Cold climate oils (Recommended for ambient temperatures between -20°C to +30°C)

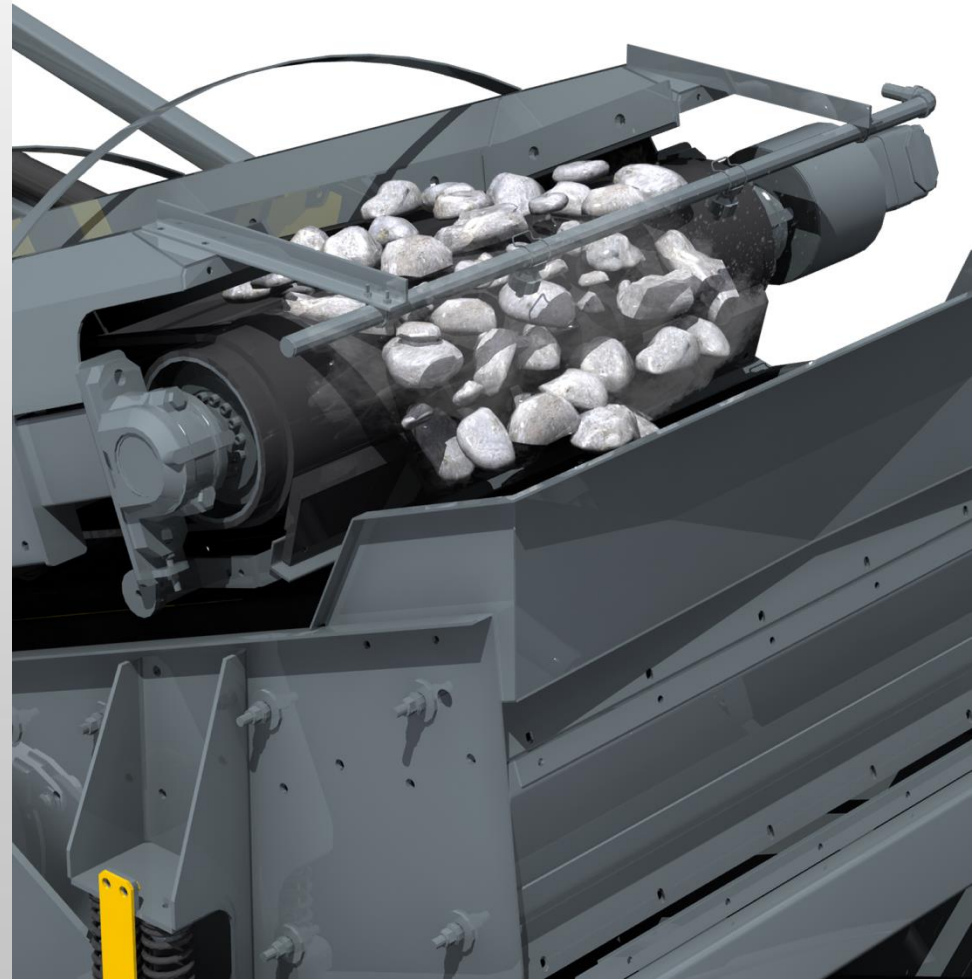
Radiator blast guards

Plant lighting mast



Dust Suppression (Option)

| Water Pump

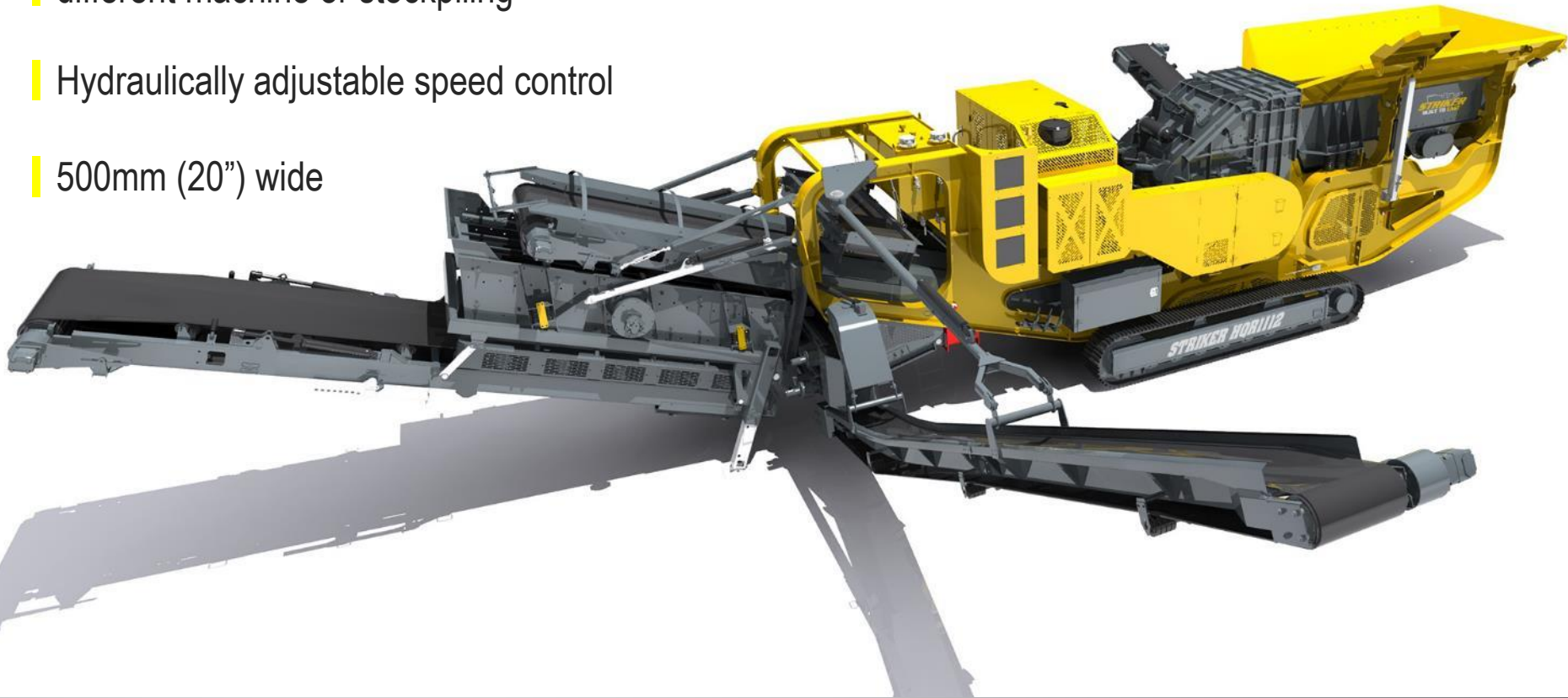


Stockpile Recirculation Conveyor (Option)

The recirculation conveyor can be slewed in or out to allow for return to the crusher, return to different machine or stockpiling

Hydraulically adjustable speed control

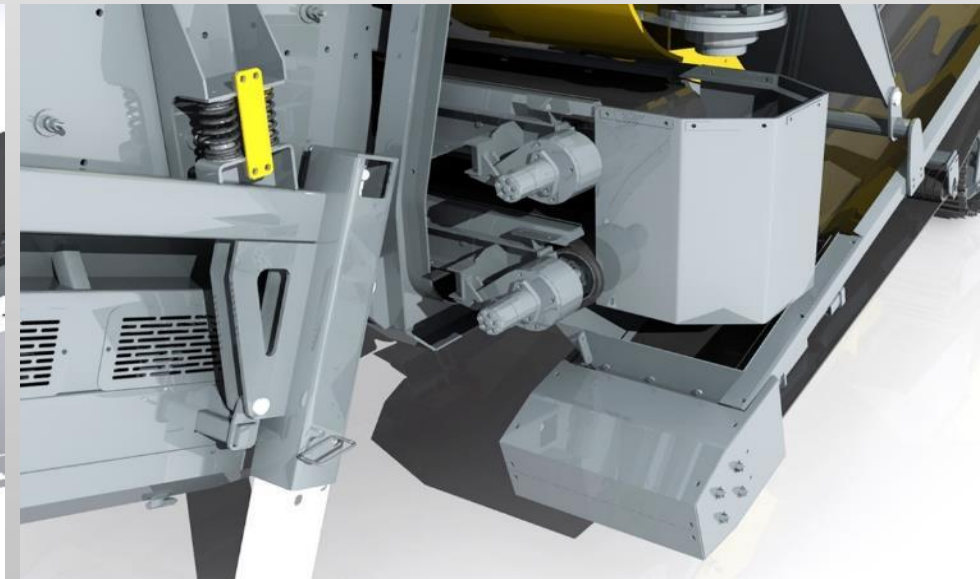
500mm (20") wide



Screen (Option)

- The screen box is a:
Hydraulic operated double deck vibrating screen,
3350mm x 1525mm (11ft x 5ft)
- Detachable double deck 1525mm (5') x
3350mm (11') vibrating screen
- Bottom Transfer Conveyor: 500mm (20") wide

- Hydraulic tilting oversize recirculation
conveyor that stows for transport
- Added ability to produce a graded product
- Bottom deck aperture mesh – Specify Size
- Negates the need for a separate screen

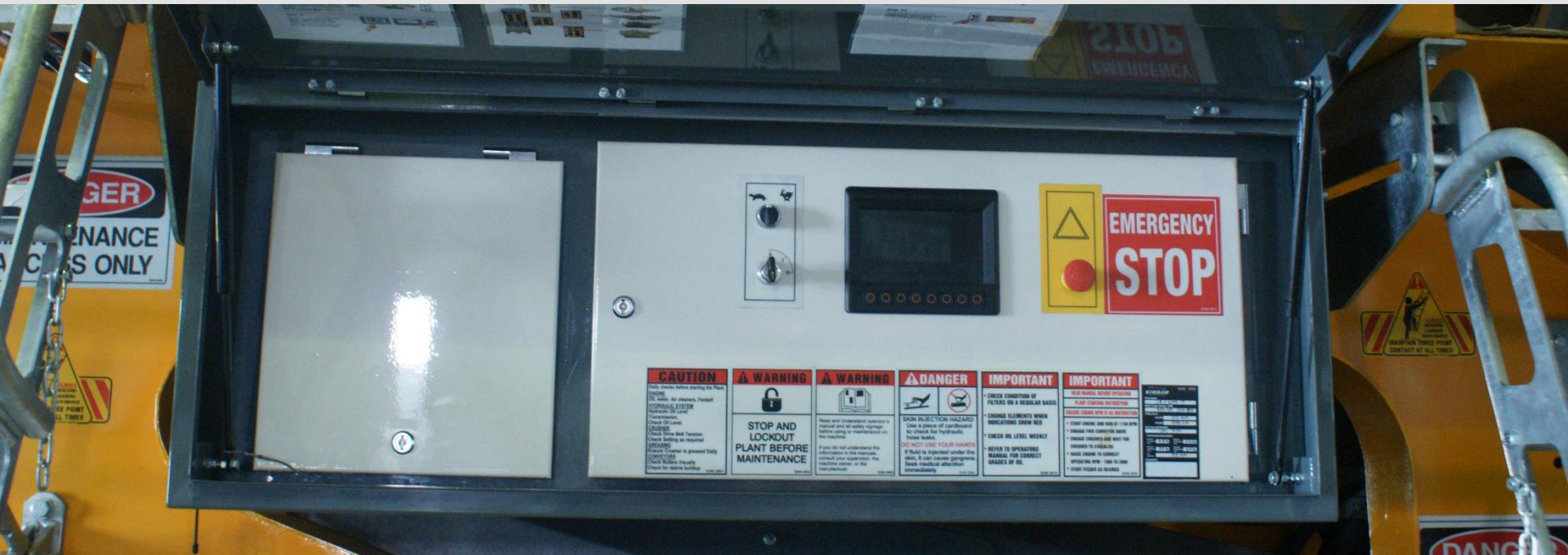


Controls (Option)

- Full PLC control panel
- Full system diagnostics
- Controls fitted to the plant include:

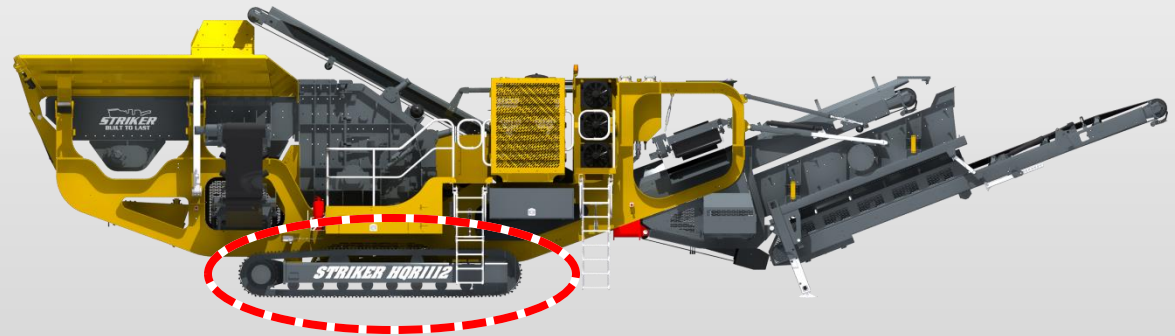
Sequential start up

- Engine (start/stop/speed)
- Crusher (start/stop)
- Optional side conveyor (start/stop)
- Feeder (start/stop/speed) controls, located on the side of the plant



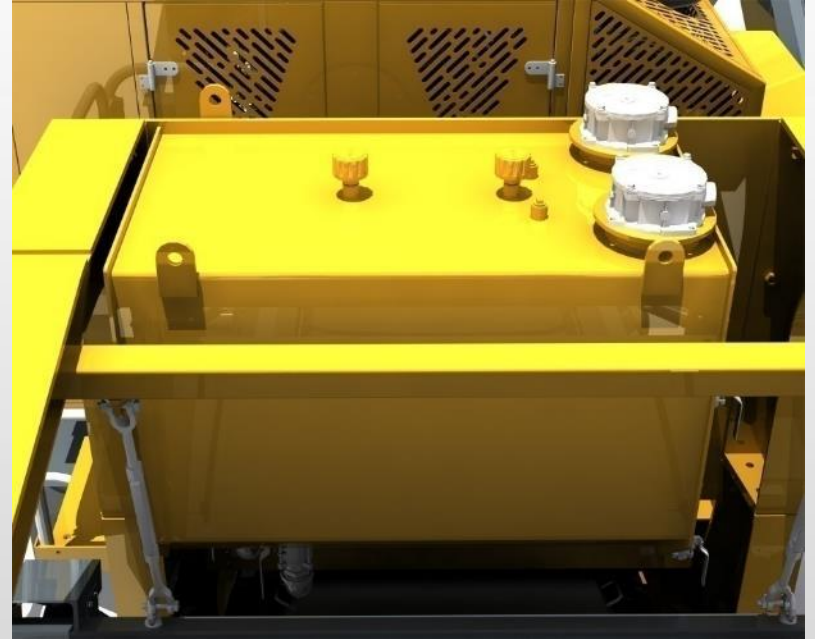
Tracks (Option)

Lift and widen machine track kit for extra ground clearance



Fuel & Hydraulic Tank (Option)

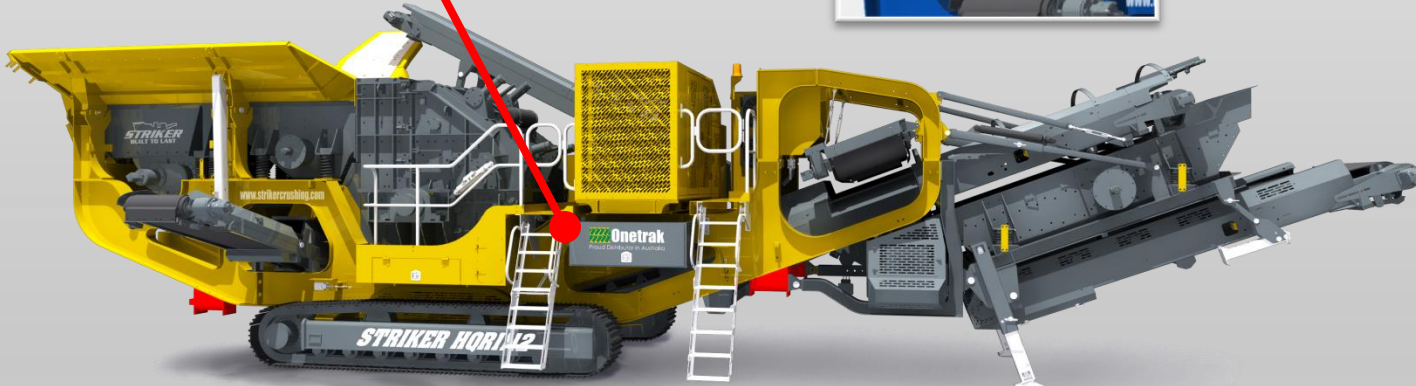
Option to increase fuel tank capacity



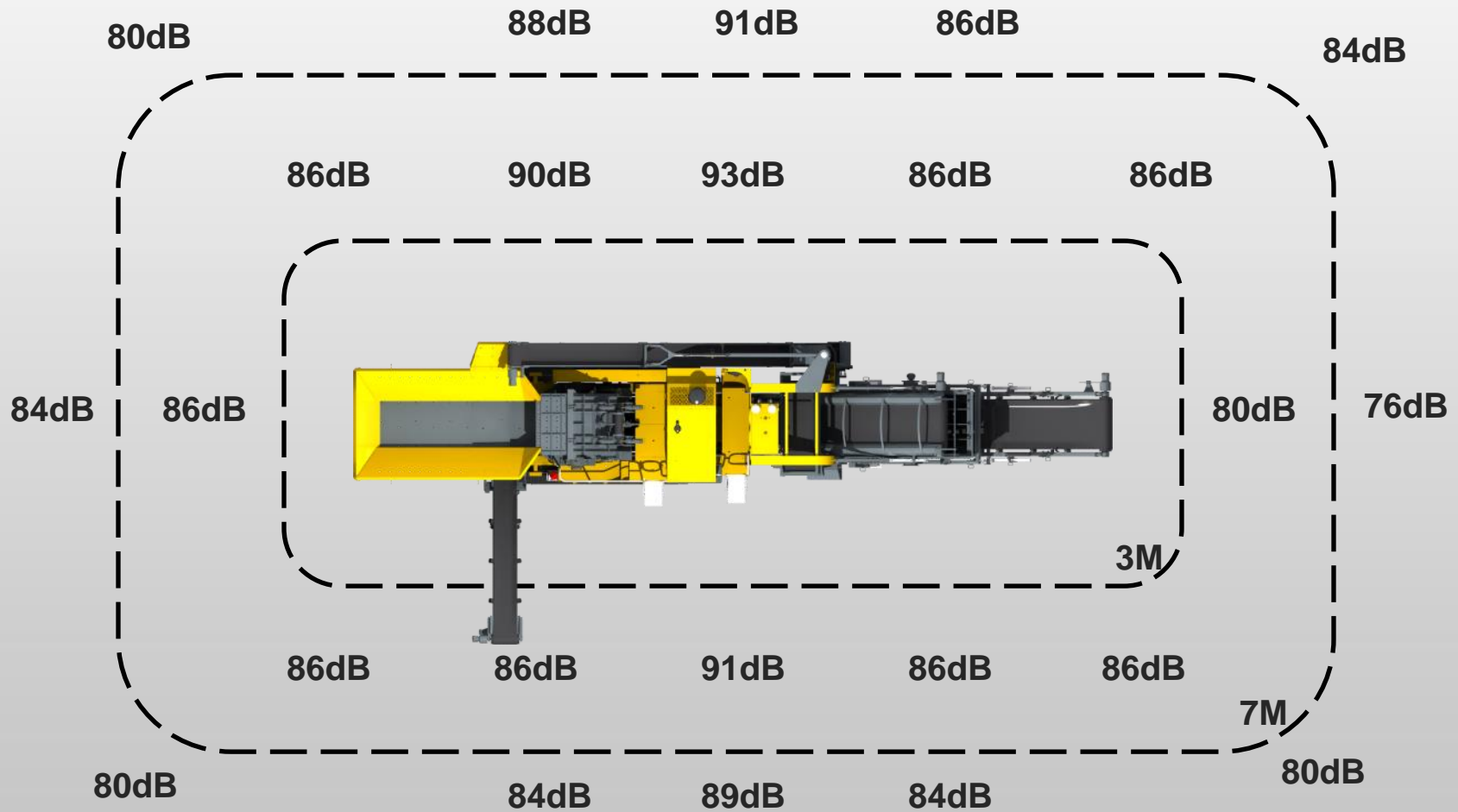
Custom Branding (Option)

Custom paint

Custom logo on machine



Sound Levels



Selling Features Summary

Strong, reliable, robust heavy duty body designed & engineered web & flange chassis, fully welded & fabricated from high grade steel to withstand the rigors of operation & transportation

Hydraulically folding feed hopper wings fabricated from wear resistant steel including hydraulically powered locking system

Self cleaning stepped grizzly with vibrating twin shaft exciter

Heavy duty crusher design with fully hydraulic adjustable setting and optional under-crusher deflector plate

CATERPILLAR® engine as standard, compliant to industry regulations

Heavy duty tracks suitable for any environment

Extra wide product conveyor with full length rubber side skirts utilising wear resistant steel clamp plates

Maximised discharged height for product stockpiling

Height adjustable, overboard magnetic separator

Two hydraulic oil coolers fitted as standard for maximum productivity in warmer climates

Water spray system fitted to the forward product conveyor and jaw opening