



www.strikercrushing.com



Mobile Crushing & Screening

SQR1652

Features & Benefits









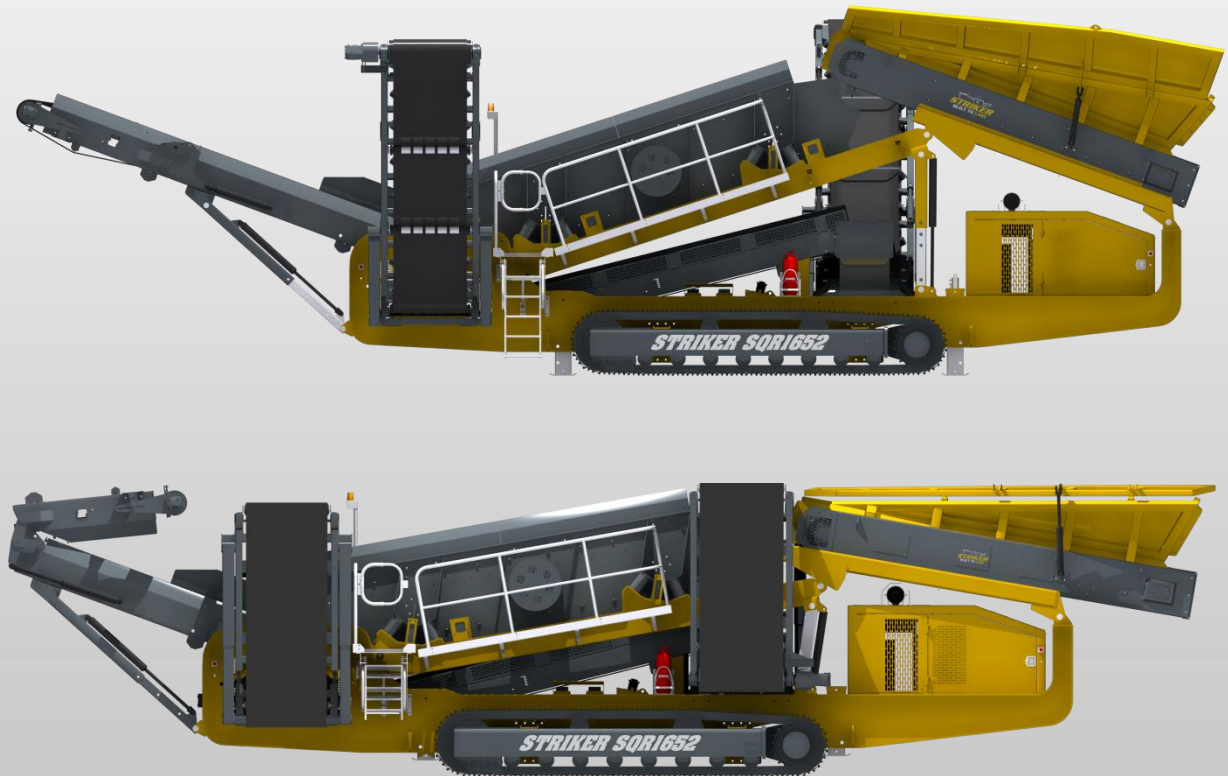
(SP02SI154-1901)

Tracked Screen SQR1652



Transport Dimensions

STRIKER SQR1652	
Operating Dimensions:	
	14789mm 48' 6"
	14358mm 47' 1"
	4521mm 14' 10"
Transport Dimensions:	
	14115mm 46' 4"
	2998mm 9' 10"
	3411mm 11' 2"
Weight (T):	30.4T
Weight (lbs):	67,021lbs



Feed Hopper

Loading Height – 3437mm (11' 3")

Feed Hopper Capacity – 8.7m³ (11.7yd³)



Feed Hopper Wings

- Heavy duty wear resistant steel feed hopper construction
- Variable speed gearbox drive conveyor
- Reinforced box section webs
- Flip out folding side wings
- Hydraulic slide into transport position
- Heavy duty impact rails / impact rollers fitted to feeder belt



Belt Feeder

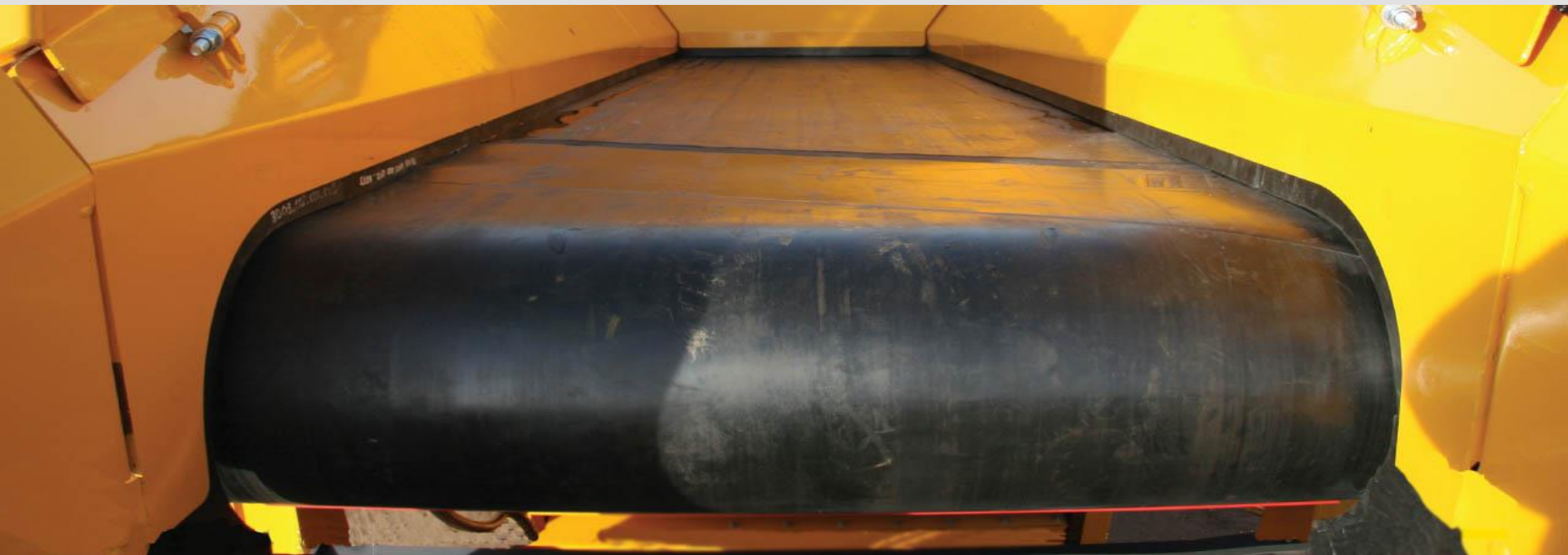
Hydraulically driven variable speed heavy duty belt

Fully skirted conveyor belt to reduce spillage with wear resistant steel liners for durability

Belt width 1200mm (47") HD 4 ply plain belt

Optional steel apron feeder

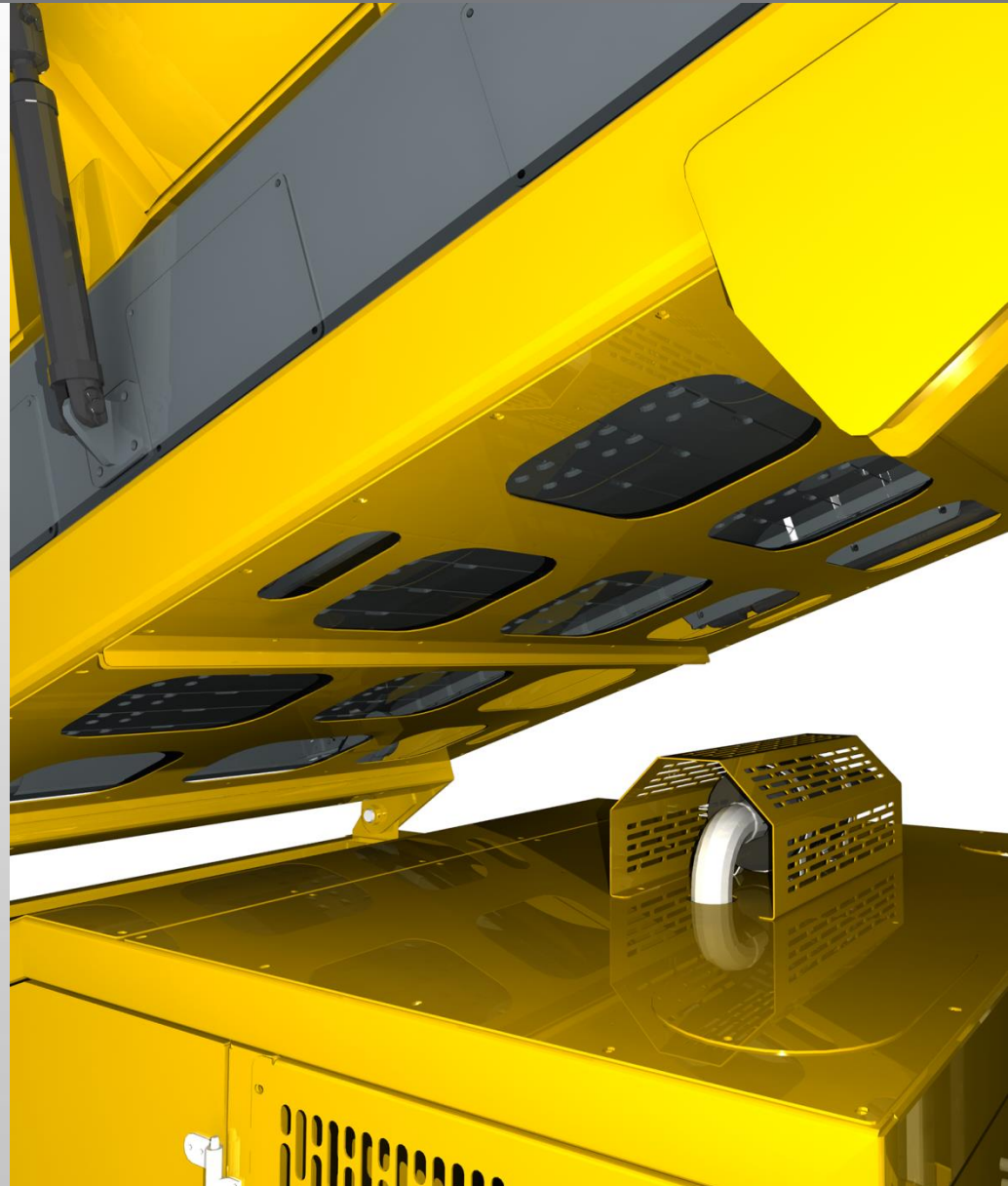
Incline belt feeder



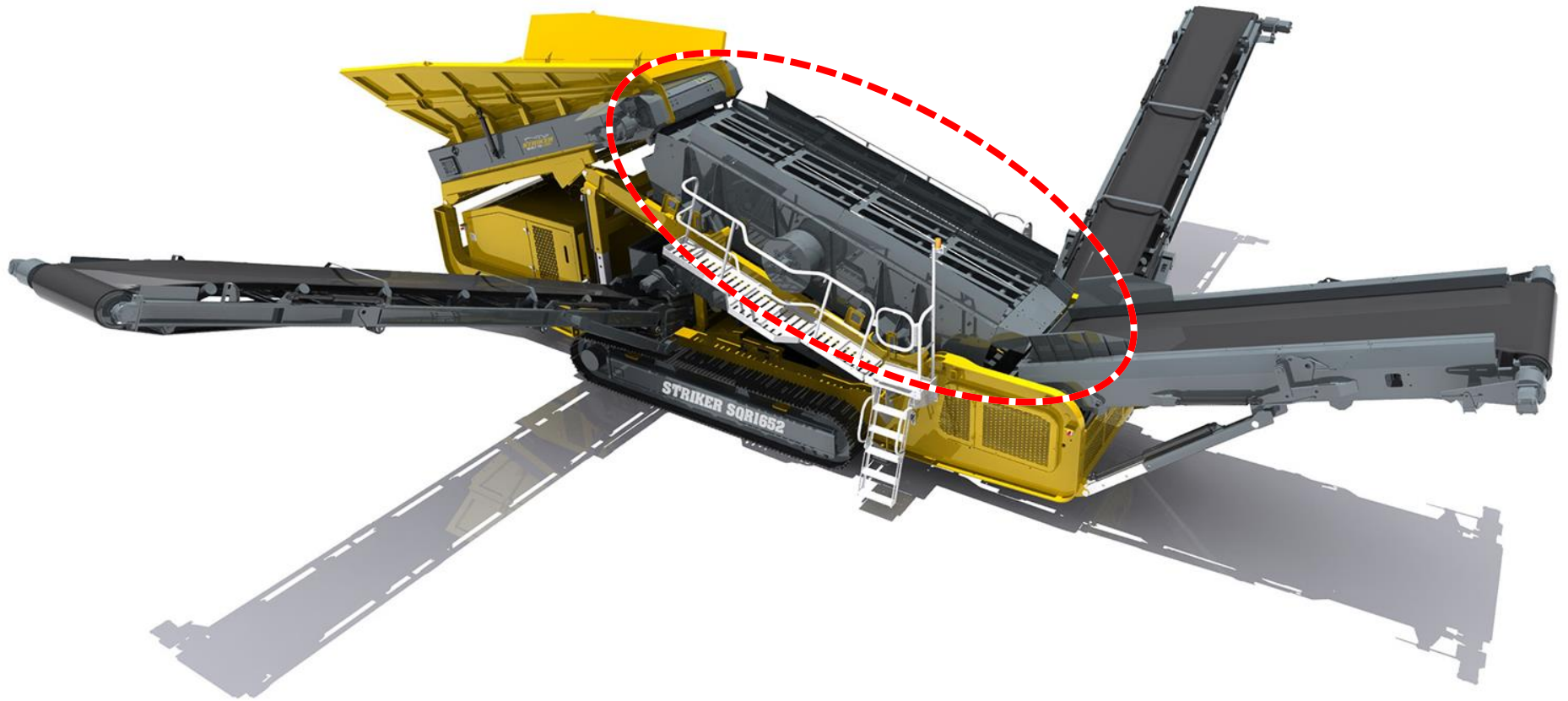
Spillage Chute

Spillage chute fitted underneath feed conveyor to protect power pack

Any spillage exits harmlessly from bottom of the chute at the back of the feed hopper



Screen



Screen Box

- 2 bearing screen box

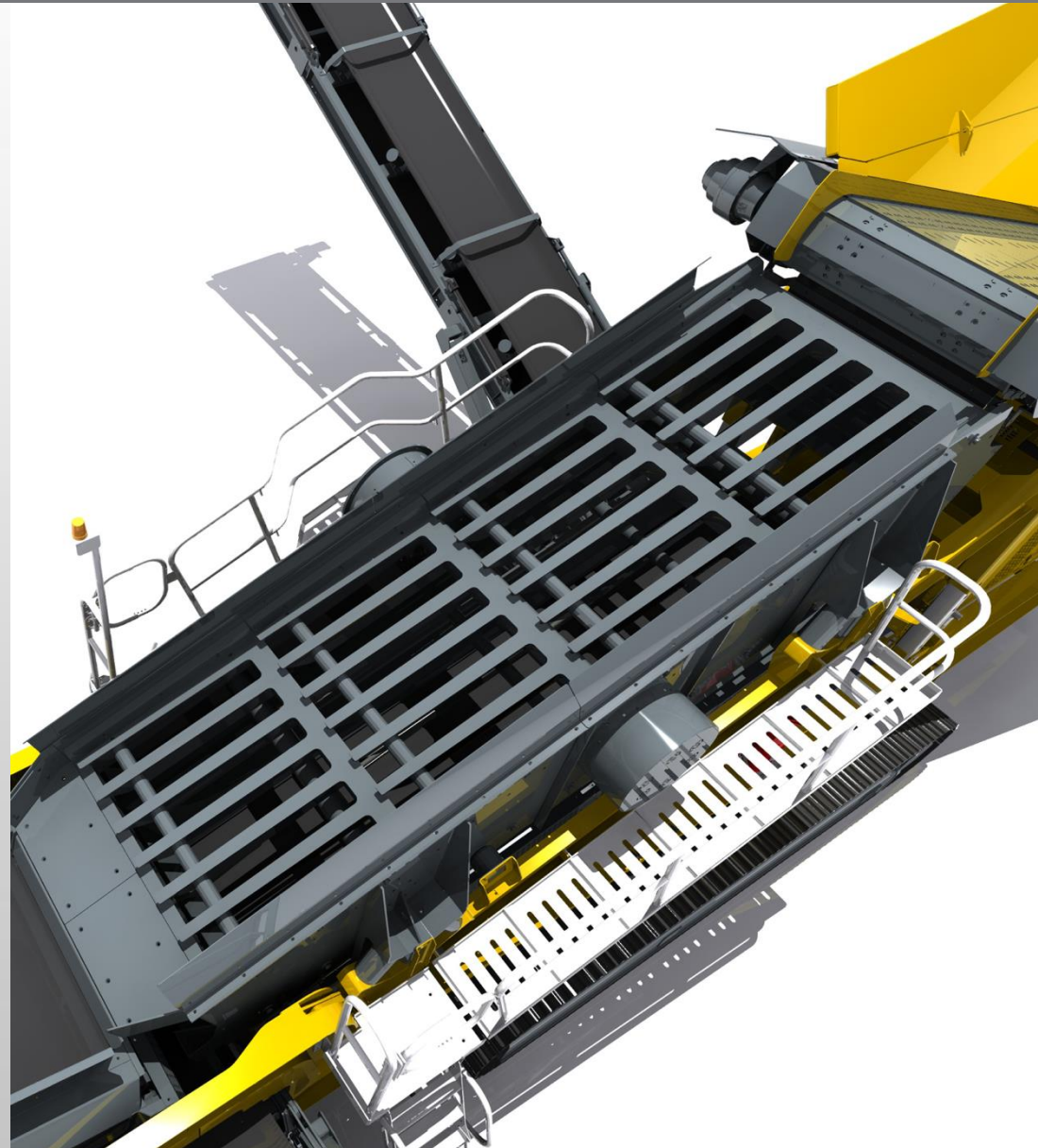
- Double deck screen:

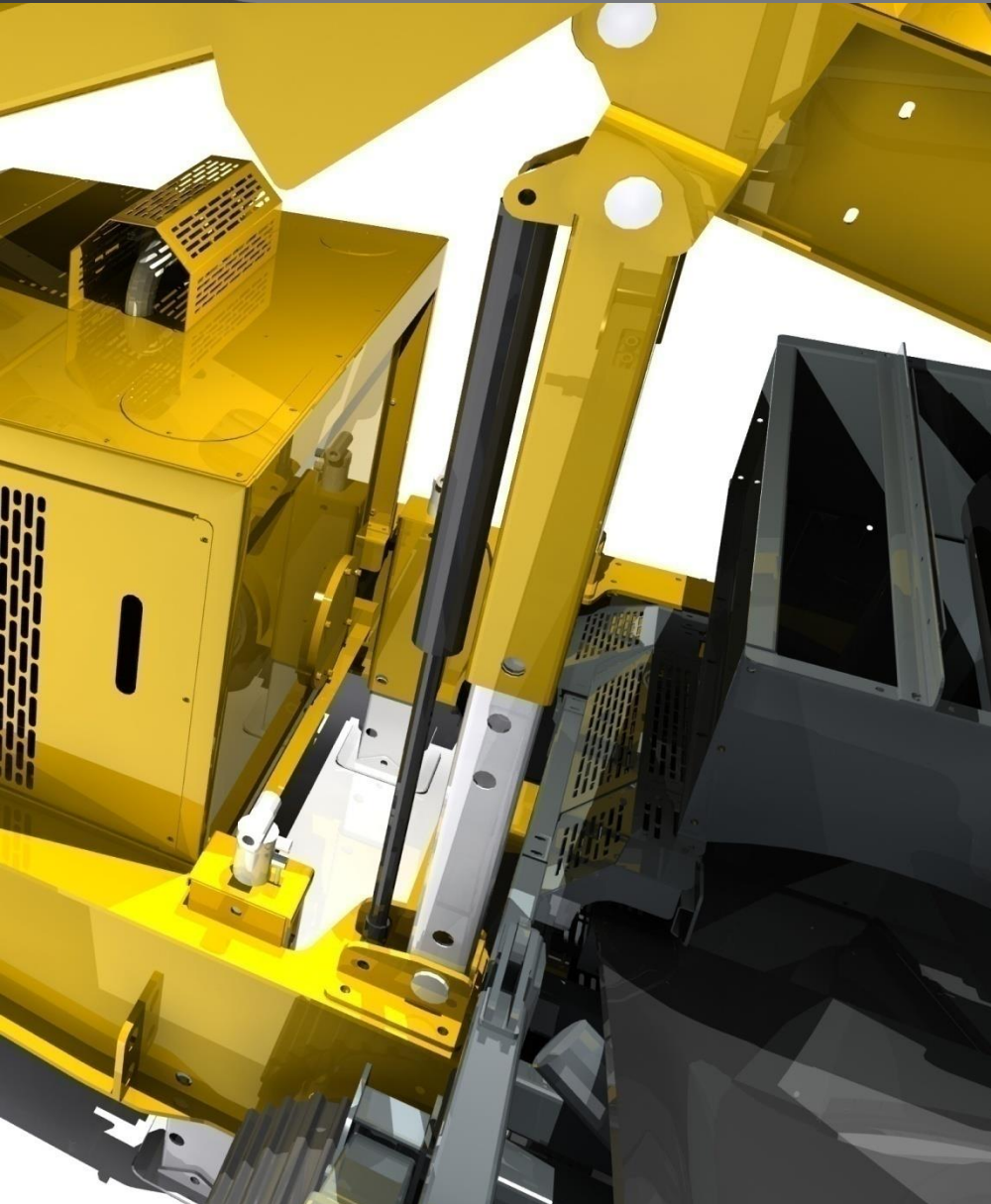
 - Top deck 4880mm x 1520mm (16' x 5')

 - Bottom deck 4880mm x 1520mm (16' x 5')

- Heavy duty screen box

- Screen walkway & access steps / ladders





Screen Angle

Screen angle can be adjusted |

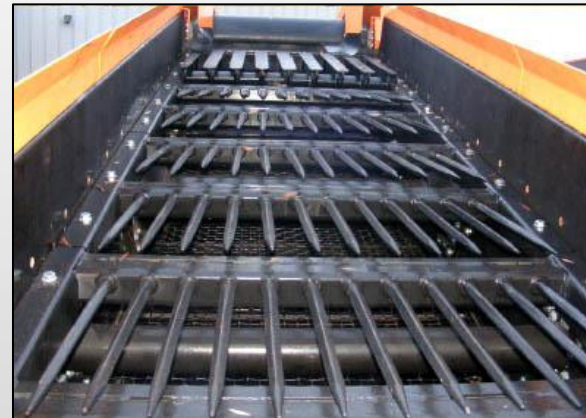
Hydraulically lifted into position |

Rapid onsite setup and operation |

Complete flexibility onsite |

Other Top Deck Types

3" Punch Plate
Assembly



Heavy Duty
Top Finger
Deck

Bofor Bar
Assembly



Woven Mesh
Various
Apertures

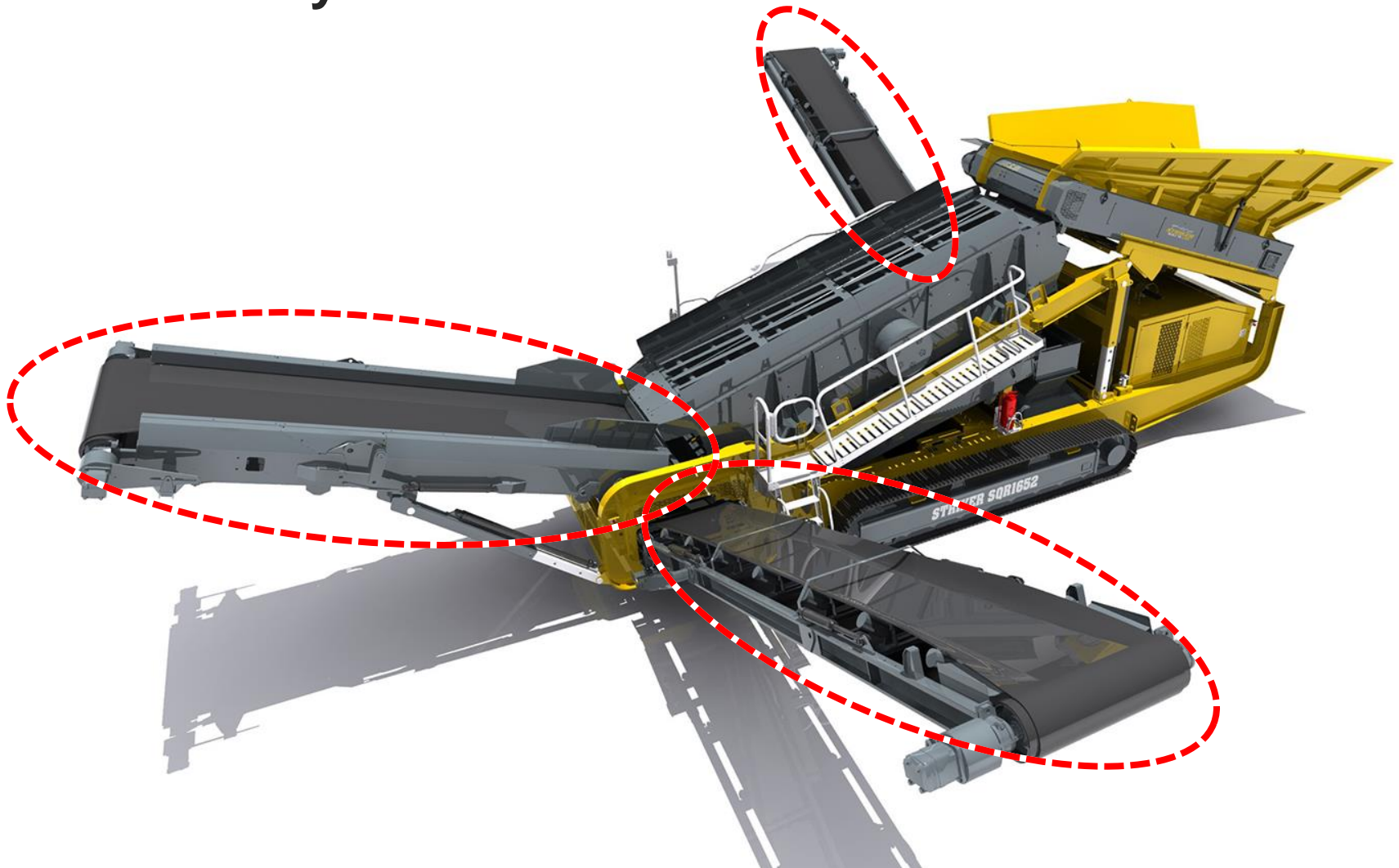
Screen Supports

Screen box is mounted independently from the chassis

Four sets of three springs absorb the screens vibration to reduce stress on the main chassis

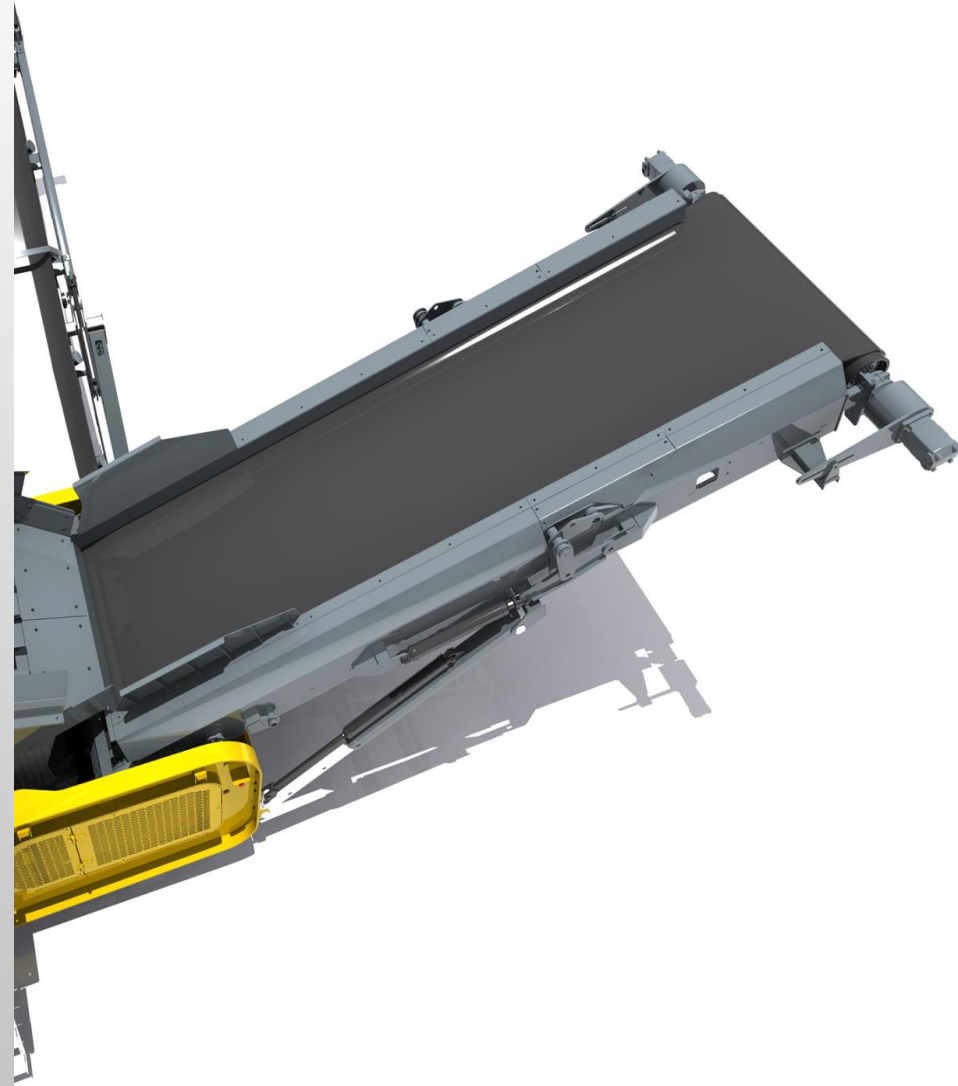


Plant Conveyors



Oversize Conveyor

- Heavy duty chevron belt 1500mm (60") wide – 4 ply chevron belt
- Hydraulically folding for transport to give a shorter transport length
- Below screen discharge has conveyor with impact bars which take the load of crushed material impacting the belt
- Discharge height of 3371mm (11'1") (adjustable)
- Variable speed control
- Heavy duty impact rails
- Hydraulic slide facility, allowing access to bottom deck screenbox media



LH Side Conveyor – Fines

900mm (36") wide HD 3 ply plain belt

Hydraulically folding for transport to give a shorter transport length

Variable speed control

Heavy duty impact rails fitted to feedboot area

Fine product conveyor discharge height of 4350mm (14'3")



RH Side Conveyor – Mid-Fines

900mm (36") wide HD 3 ply plain belt

Hydraulically folding for transport to give a shorter transport length

Variable speed control

Heavy duty impact rails fitted to feedboot area

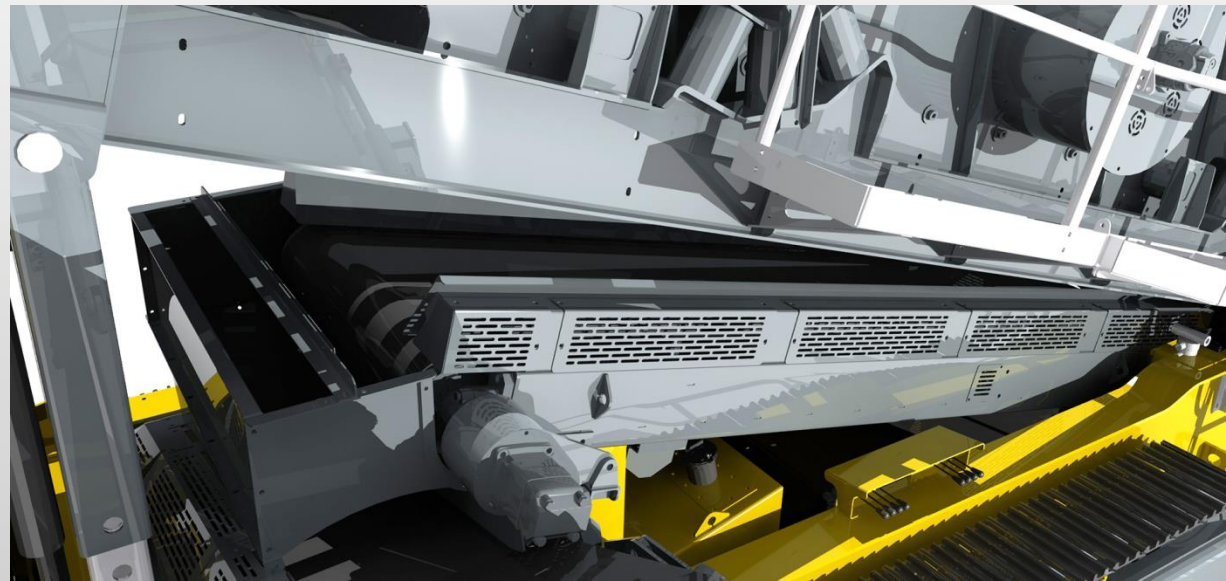
Mid product conveyor discharge height of 4106mm (13'6")



Collection Conveyor

1200mm (47") wide 3 ply plain belt

Heavy duty drive motor



Power Pack

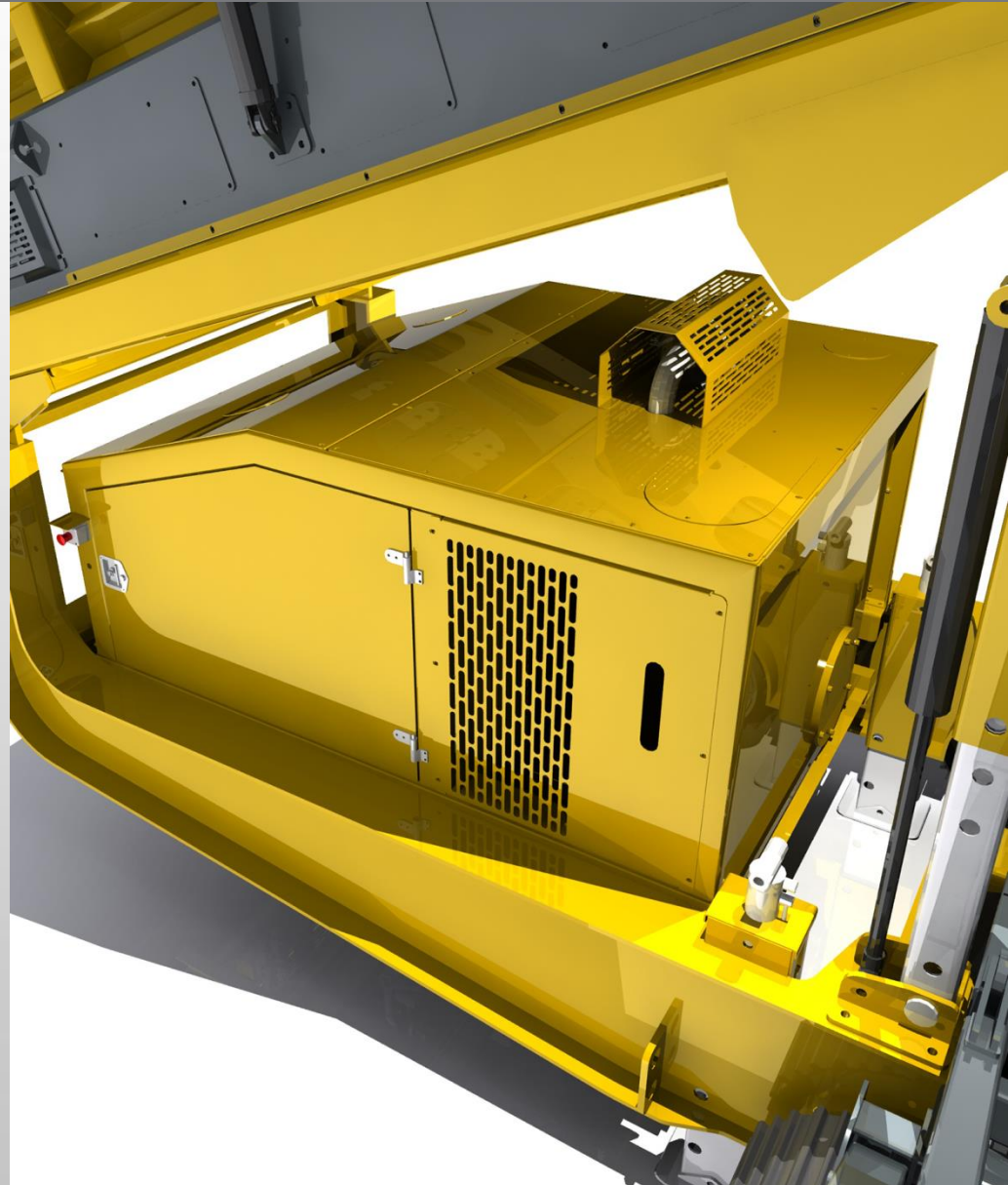
Powered by a CATERPILLAR® C4.4 Tier 3 Equivalent – 4 Cylinder diesel engine rated at 96kW

The engine complies with all current emission laws

Hydraulic Oil Grade 68

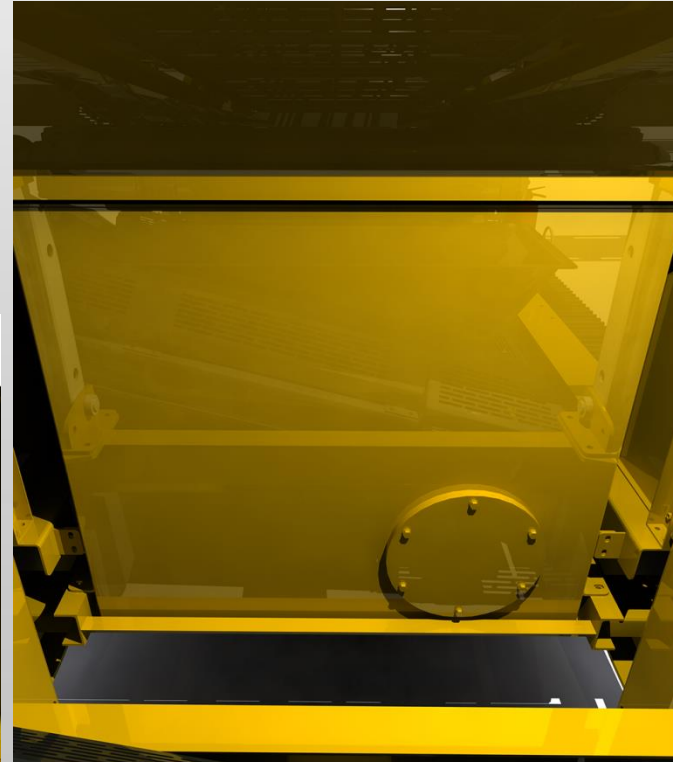
Low level, easy access for maintenance via folding panel doors

Easy to maintain, reliable and efficient



Fuel & Hydraulic Tanks

- 430 litre (95 gal) standard capacity fuel tank
- 460 litre (101 gal) standard capacity hydraulic tank
- Level indicator gauges
- Hydraulic oil filtration system and air filter
- Hydraulic oil cooler fitted as standard
- Lockable filler cap



Hydraulic Components

Easy access to hydraulic components for maintenance

Simple ON/OFF hydraulic blocks

The hydraulic system powers:

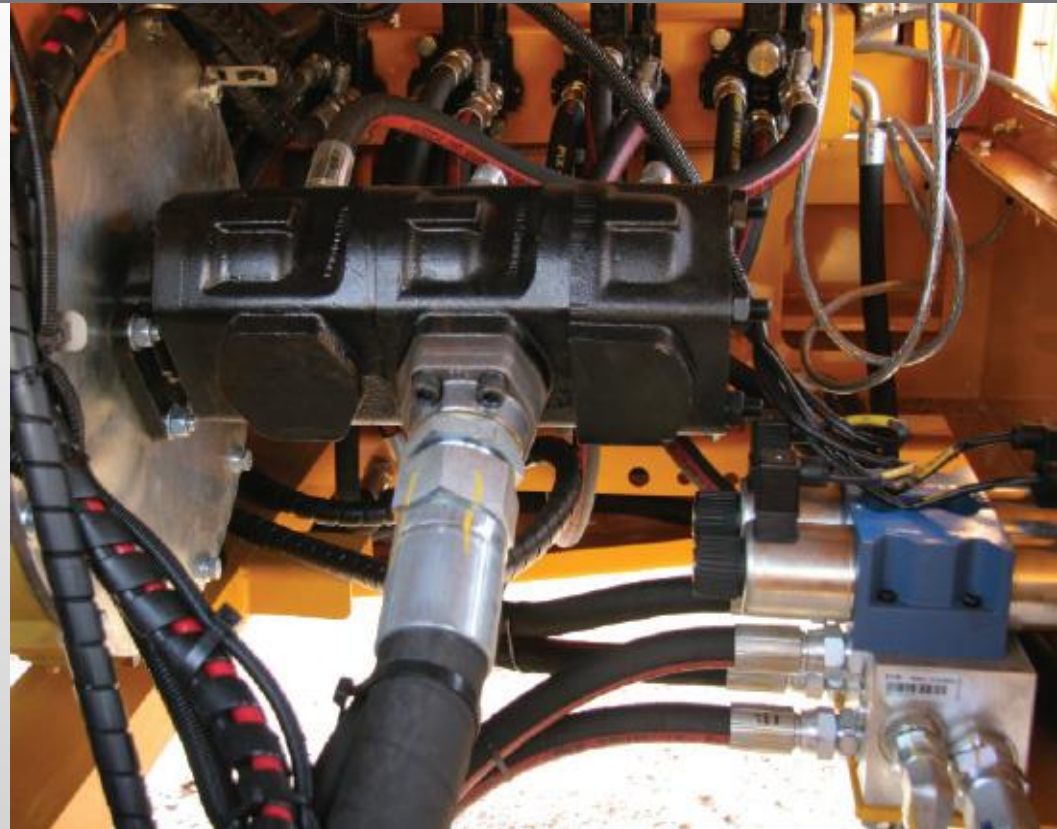
Feed hopper

Screen

Tracks

Oversize conveyor

Side conveyors



Manual Hydraulic Controls

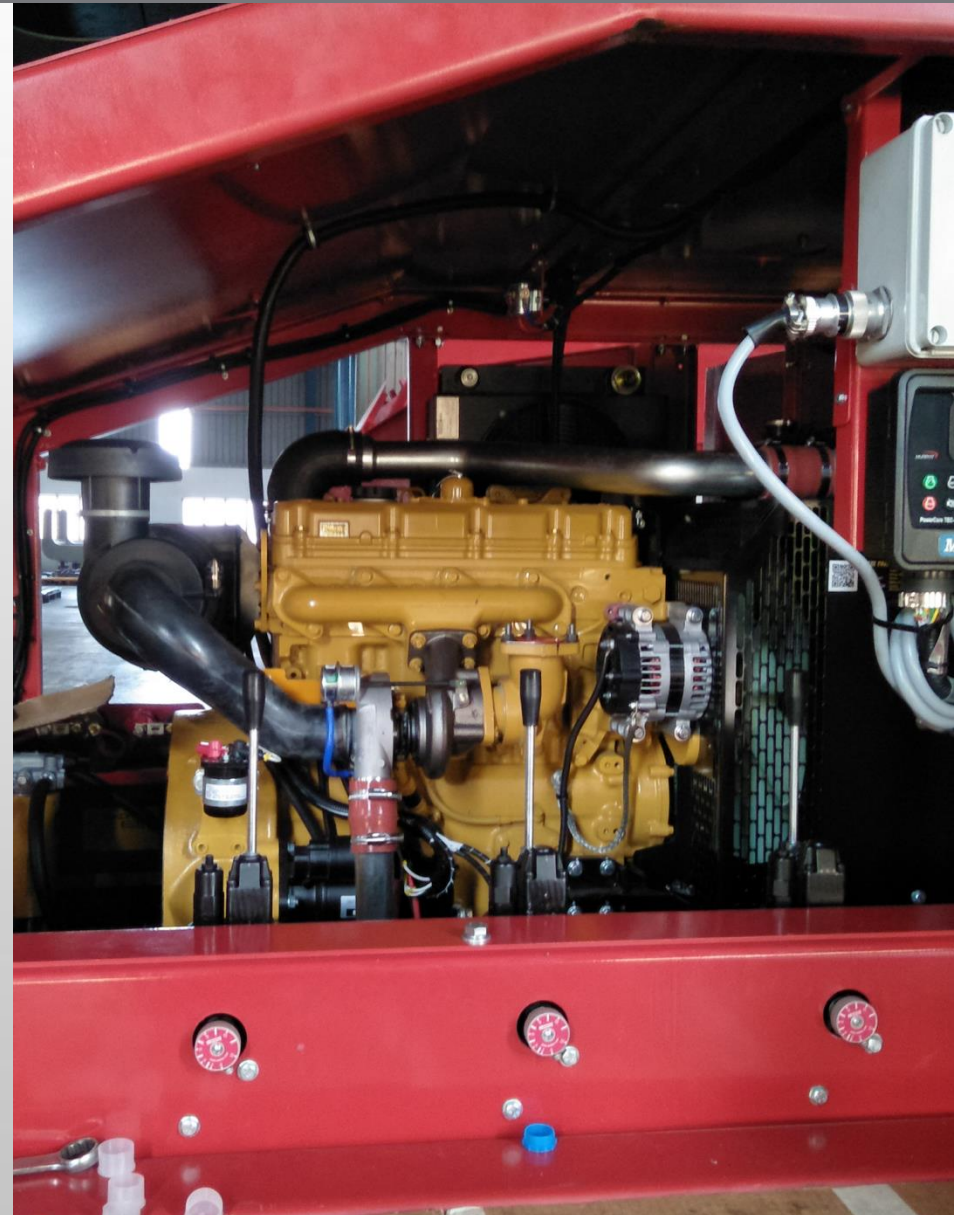
Manual hydraulic levers power the following and are easy to operate and allow for quick setup and operation:

Feed Hopper

Screen

Oversize conveyor

Side discharge conveyors



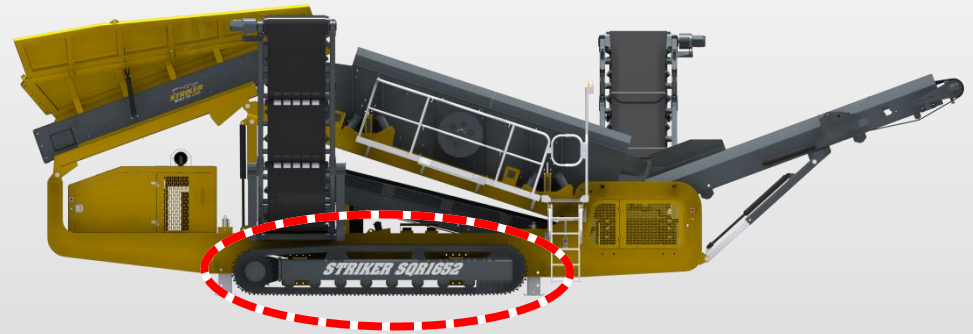
Controls

- | Simple user friendly operation
- | Clearly marked diagrammatic fault monitoring
- | Low voltage system



Tracks

- Hydraulically driven crawler tracks
- Track centres 3800mm (12'6")
- Track shoe width 400mm (1'4")



Remote Control Unit

- Ergonomic, robust hand held remote control suitable for working environments
- Emergency stop button suitably located
- Left & right track movement forward & reverse

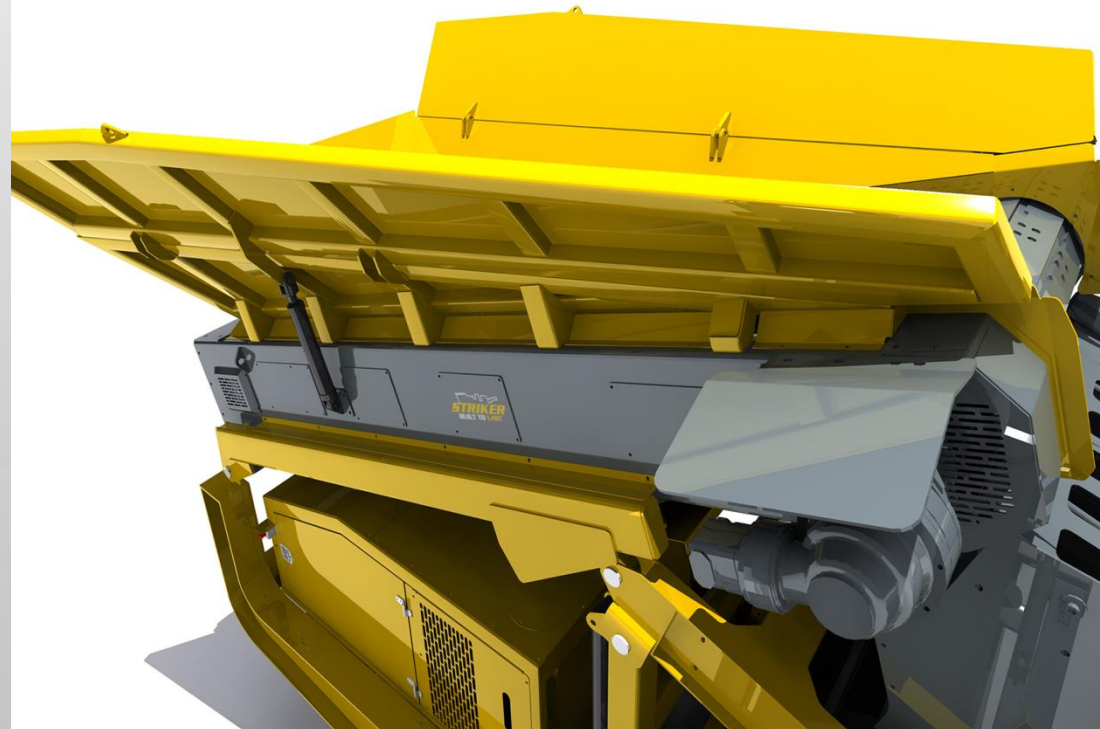


Options

- | Dust suppression system
- | Radio controlled tracks
- | Top deck mesh, bofar bars, punchplate or heavy duty finger screen deck
- | Wear resistance steel apron feeder or belt feeder
- | Plate apron feeder (replaces belt feeder)

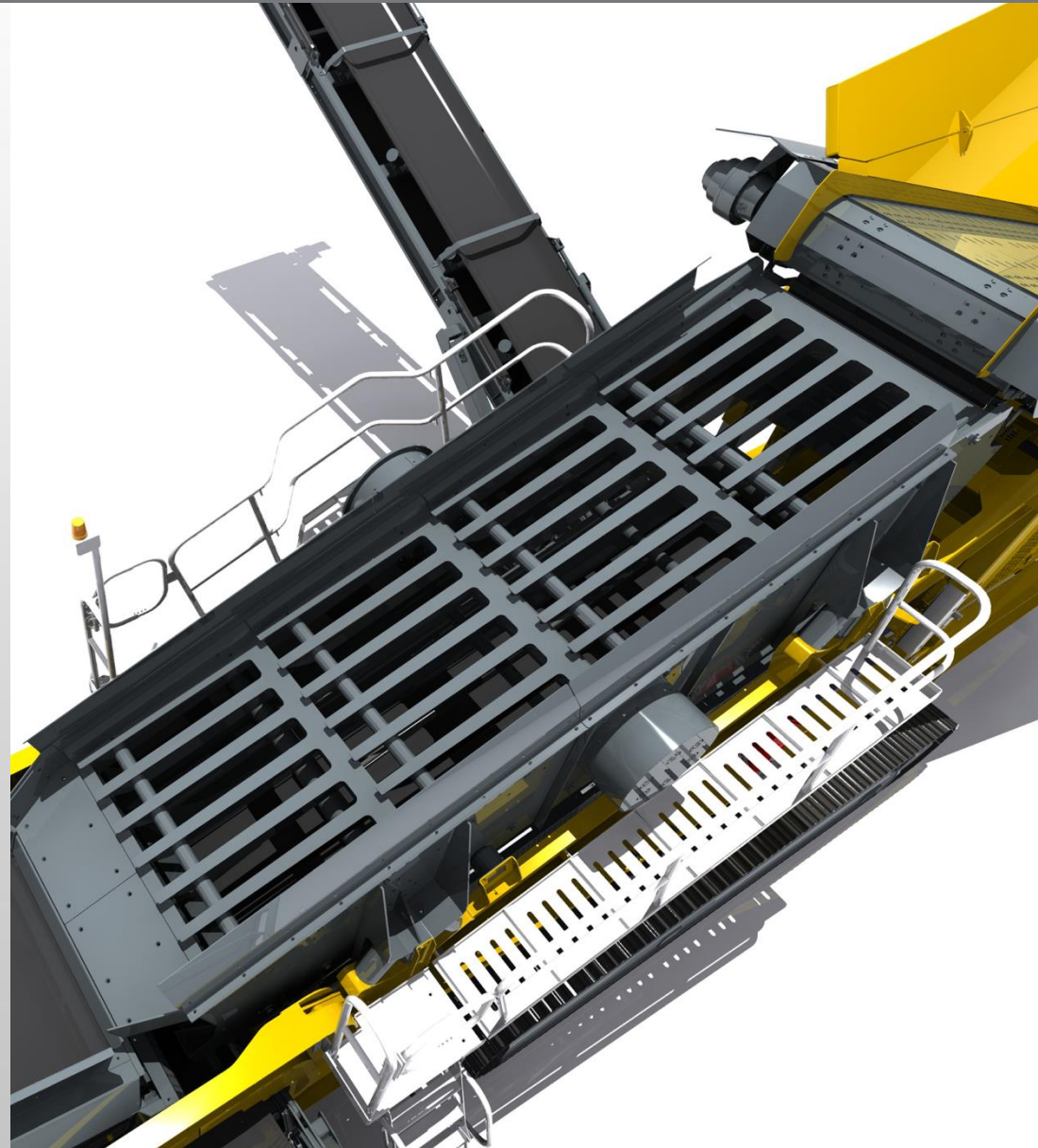
Feed Hopper Wings (Option)

- Hydraulic folding heavy duty hopper sides
- Incline apron feeder
- Plate apron feeder (replaces belt feeder)



Screen Box (Option)

Screen soft start and stop



Punch Plate (Option)



3" Punch Plate Assembly

- Striker recommend using hexagonal holes to maximise the open area on smaller apertures
- Top Deck Mild Steel
- Top Deck Wear Resistant Steel
- Bottom Deck Mild Steel
- Bottom Deck Wear Resistant Steel

** Max. top deck punched plate aperture – 150mm / max. bottom deck punched plate aperture – 125mm

** Max. feed size not to exceed 600mm

Heavy Duty Top Finger Deck (Option)



Heavy Duty Top Finger Deck

- Top Deck – 75mm (3")
- Top Deck – 50mm (2")
- Bottom Deck (State Aperture)
- Mesh frame not included

*** Max. top deck fingerscreen aperture – 75mm / max. bottom deck fingerscreen aperture – 50mm*

*** Max. feed size not to exceed 400mm*

Bofor Deck (Option)



Bofor Bar Assembly

- | Top Deck – 100mm (4")
- | Top Deck – 75mm (3")
- | Mesh frame not included

** Max. bofor aperture – 100mm

** Max. feed size not to exceed 600mm

Woven Mesh (Option)



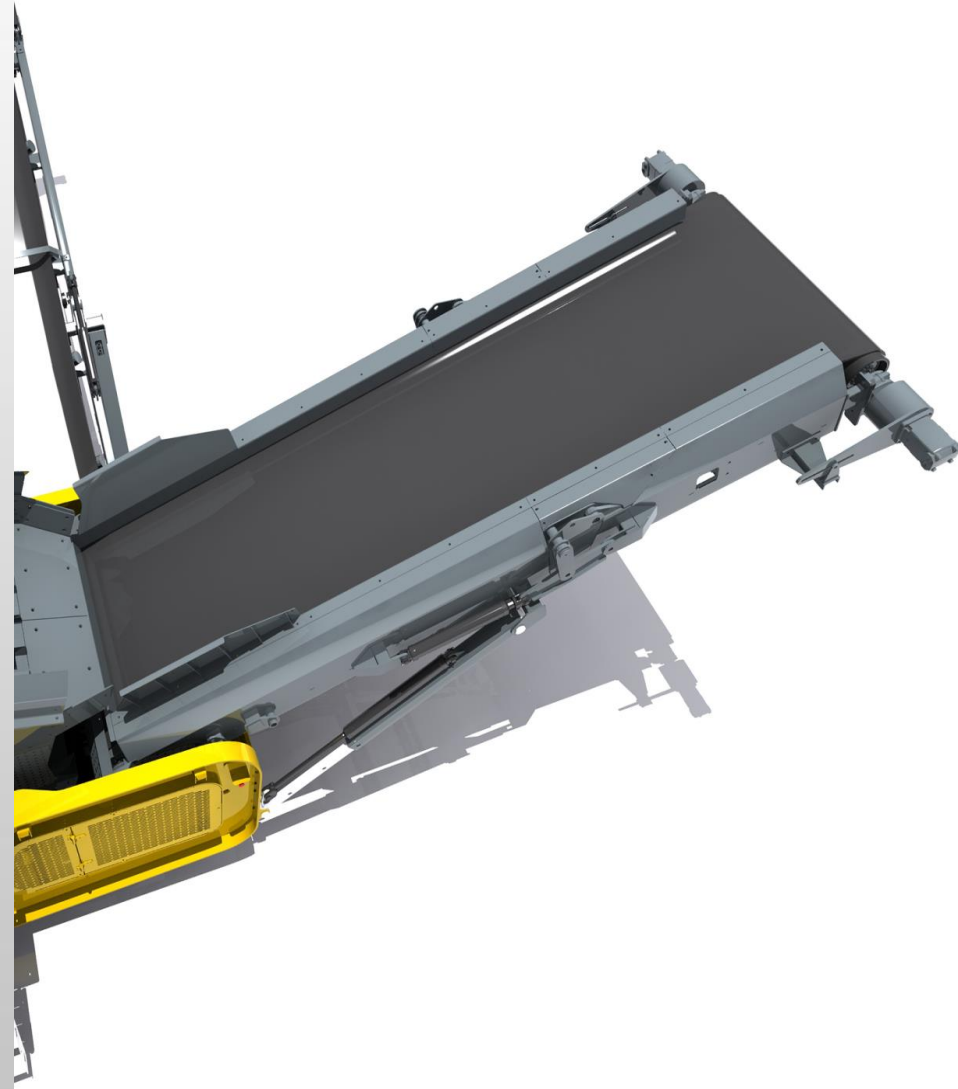
Woven Mesh Various Apertures

Top Deck Woven
(Max Mesh aperture - 120mm / max)

Bottom Deck Woven
(Max Mesh aperture - 75mm)

Oversize Conveyor (Option)

Spherical roller bearings with 2 piece housings



LH Side Conveyor – Fines (Option)

Chevron Belt

Spherical roller bearings with 2 piece housings

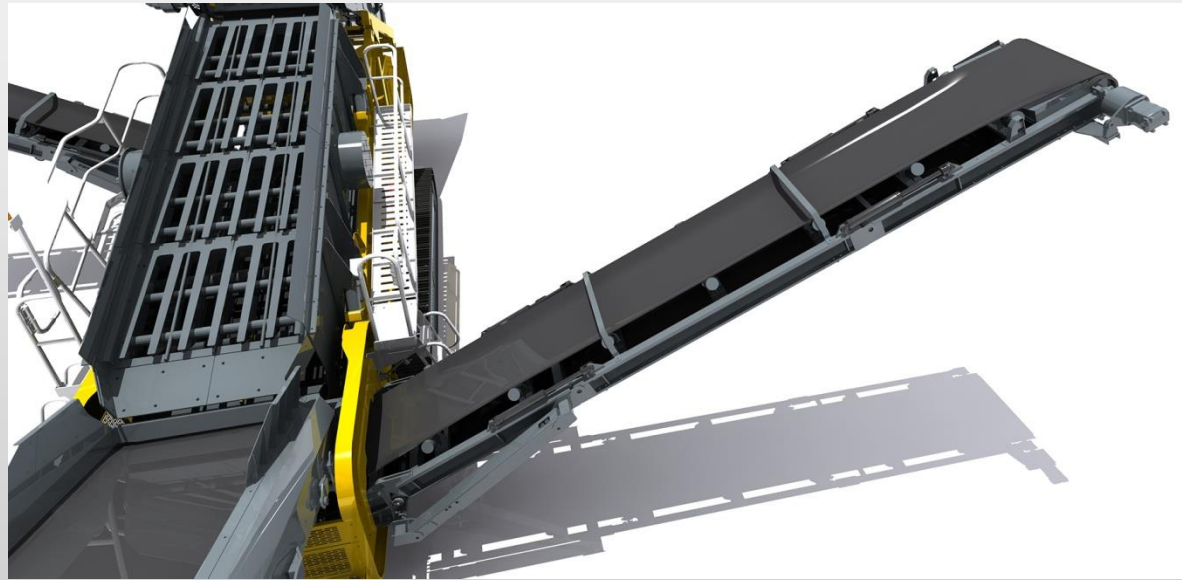


RH Side Conveyor – Mid-Fines (Option)

Chevron Belt

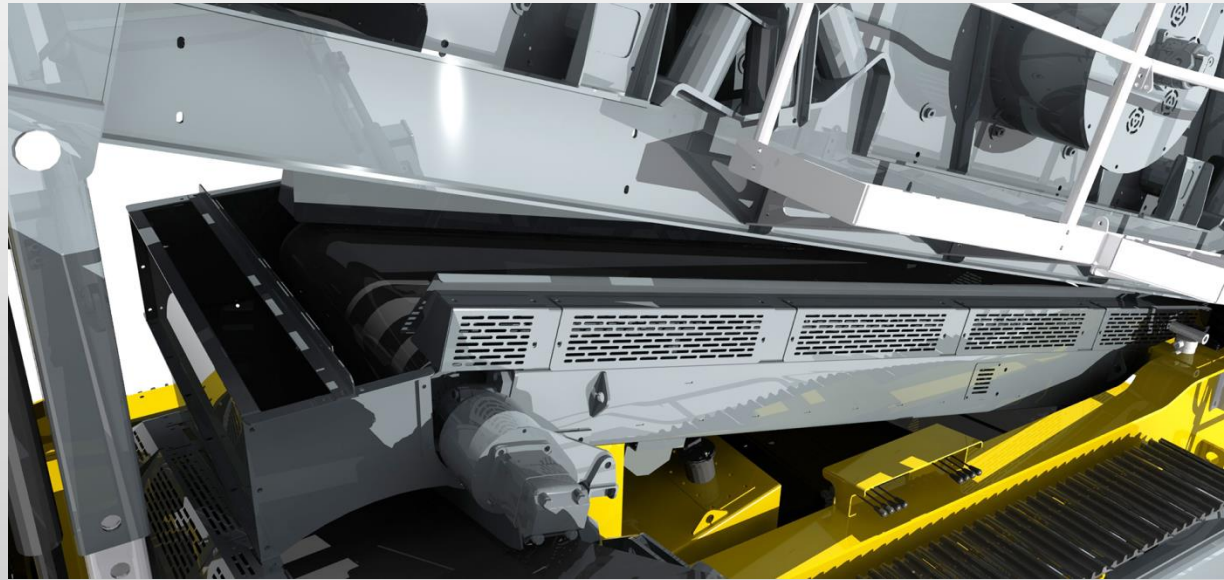
Conveyor removed, plant in 2 way split configuration

Spherical roller bearings with 2 piece housings



Collection Conveyor (Option)

Spherical roller bearings with 2 piece housings



Machine Safety Aspects

- | Nip Point guarding
- | External conveyor belt adjustment
- | Remote greasing
- | Engine start delay & siren
- | Warning siren to alert that the machine is tracking
- | Engine emergency stops

Selling Features Summary

Strong, reliable, robust heavy duty body designed & engineered web & flange chassis, fully welded & fabricated from high grade steel to withstand the rigors of operation & transportation

CATERPILLAR® engine as standard, compliant to industry regulations

Heavy duty tracks suitable for any environment

Extra wide product conveyor with full length rubber side skirts utilising wear resistant steel clamp plates. Maximised discharge height for product stockpiling

Hydraulically folding conveyor for compact transportation and rapid operational setup