

**STRIKER**  
BUILT TO LAST

[www.strikercrushing.com](http://www.strikercrushing.com)



## Mobile Crushing & Screening

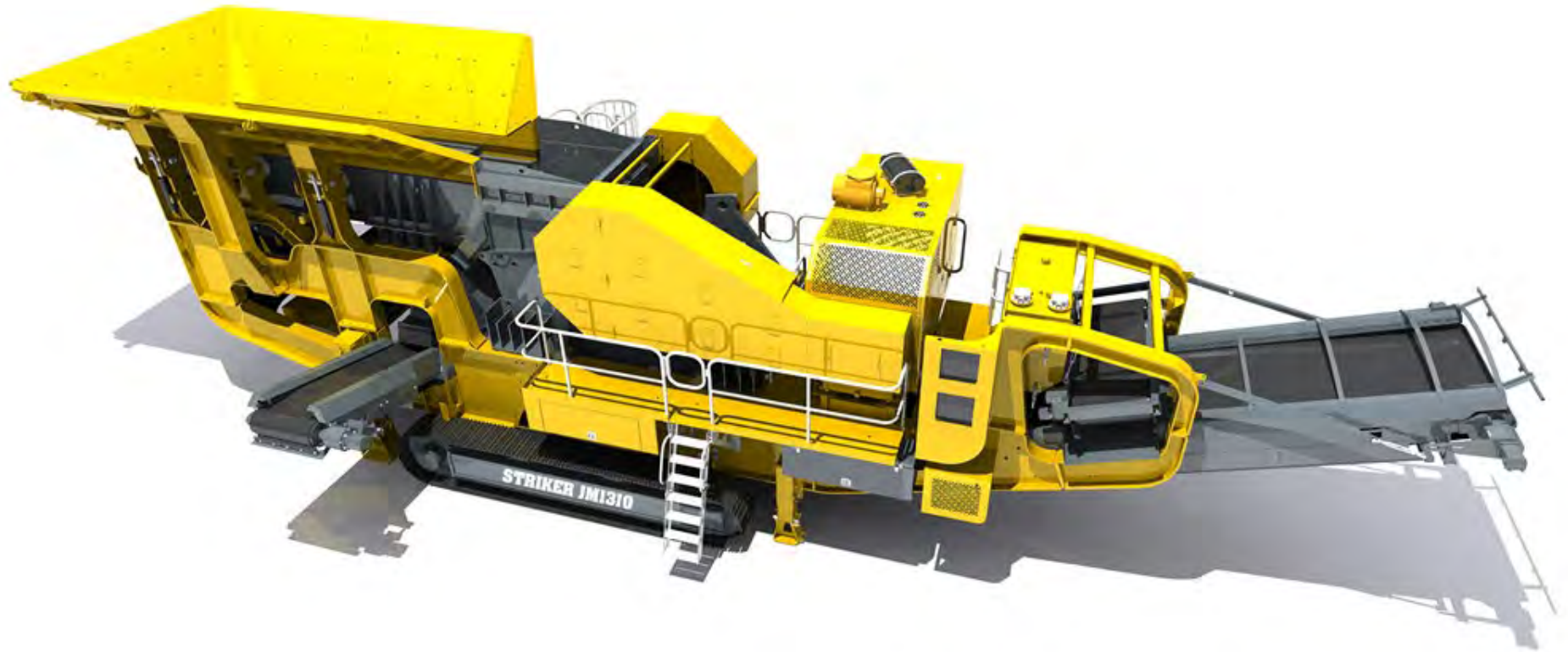
**JM1310**

Features & Benefits



(SP02SI150-1900)

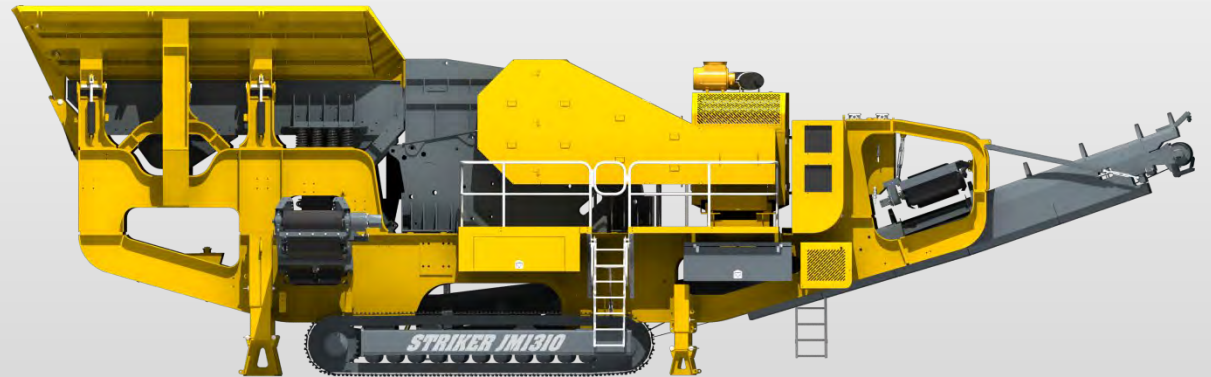
## Tracked Jaw Crusher JM1310



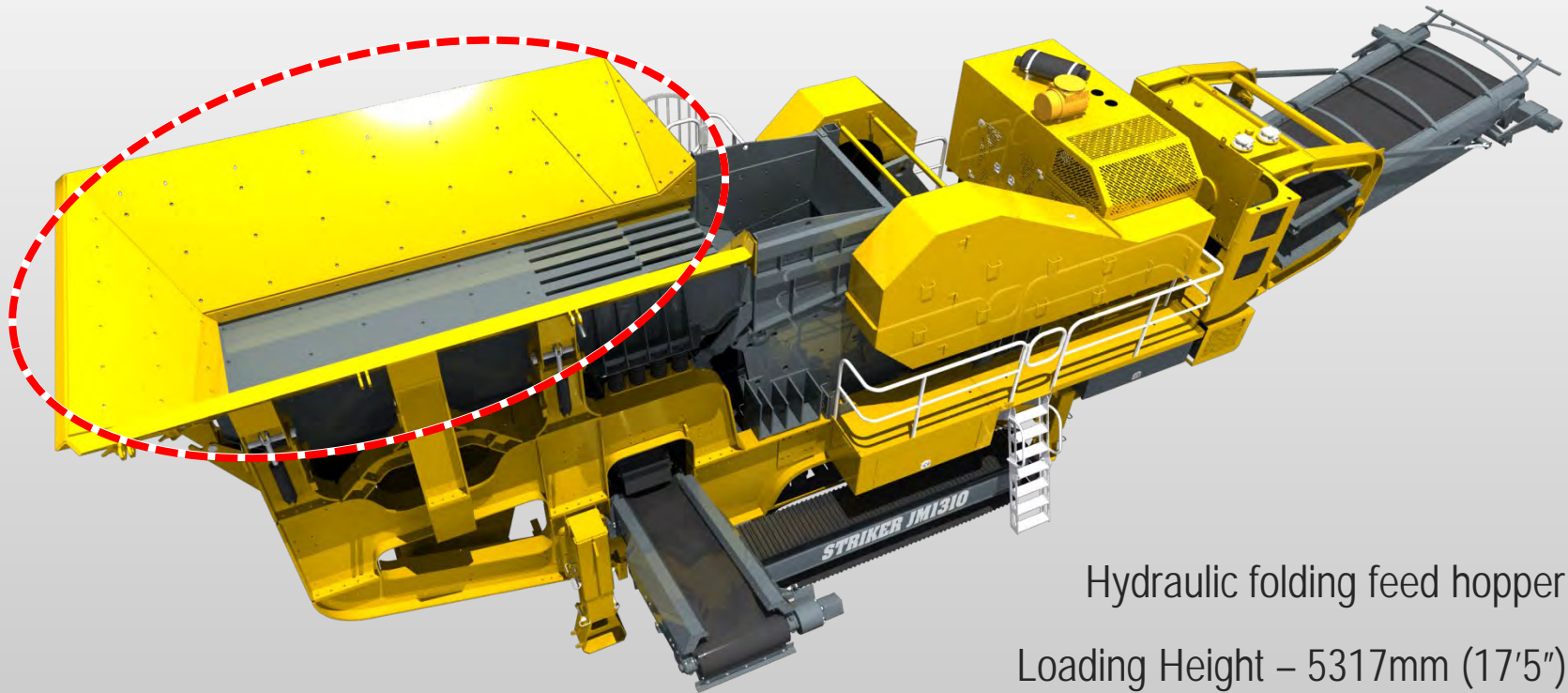


## Transport Dimensions

JM1310	
<b>Operating Dimensions:</b>	
	17131mm 56' 2"
	5544mm 18' 2"
	5316mm 17' 5"
<b>Transport Dimensions:</b>	
	17151mm 56' 3"
	3502mm 11' 6"
	4582mm 15'
Weight (T):	97T
Weight (lbs):	213,848lbs



## Feed Hopper



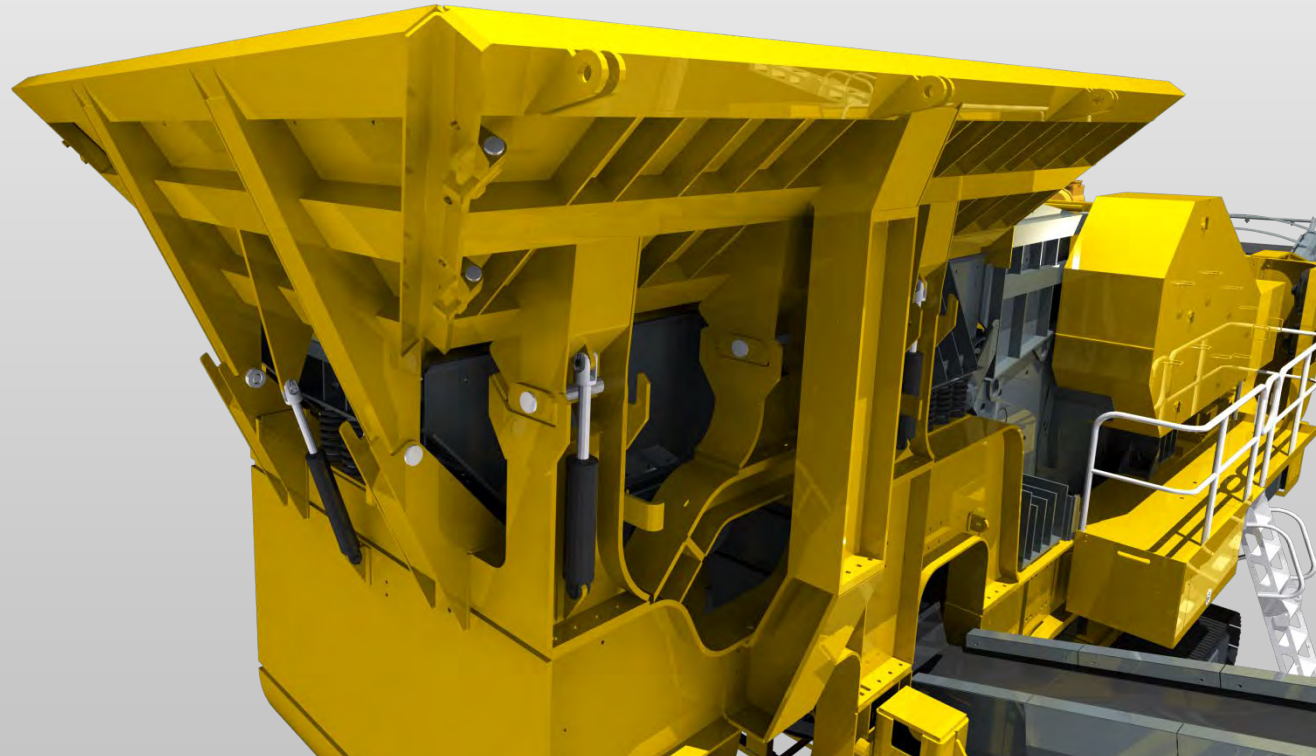
Hydraulic folding feed hopper |

Loading Height – 5317mm (17'5") |

Feed Hopper Capacity – 15.0m<sup>3</sup> (20yd<sup>3</sup>) |

## Feed Hopper Wings

- | Heavy duty wear resistant steel feed hopper construction
- | Hydraulically operated folding side and rear wings
- | Reinforced box section webs
- | Rapid set up time



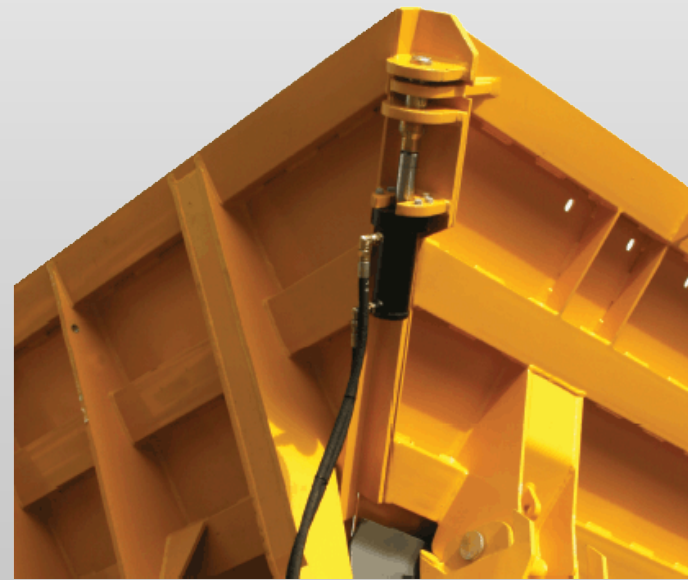
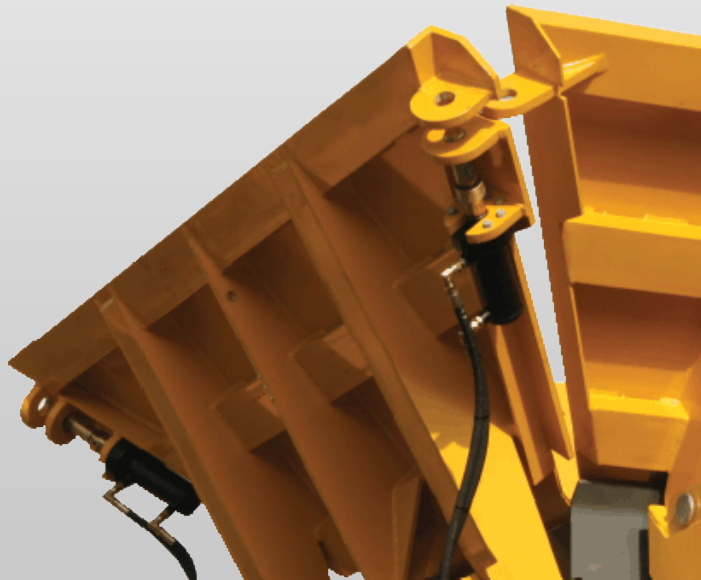


## Feed Hopper Locking Mechanism

Unique hydraulic locating and locking system

Increased safety feature

Removes the need to climb on the plant

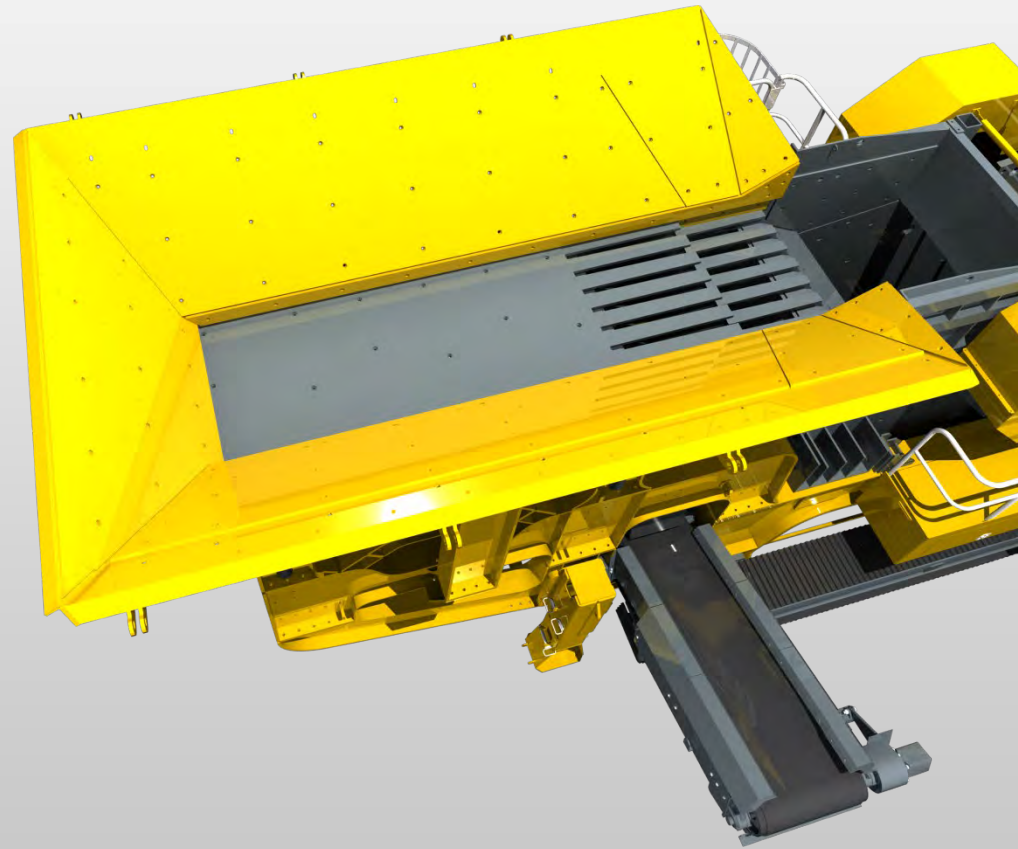


## Feeder Liners

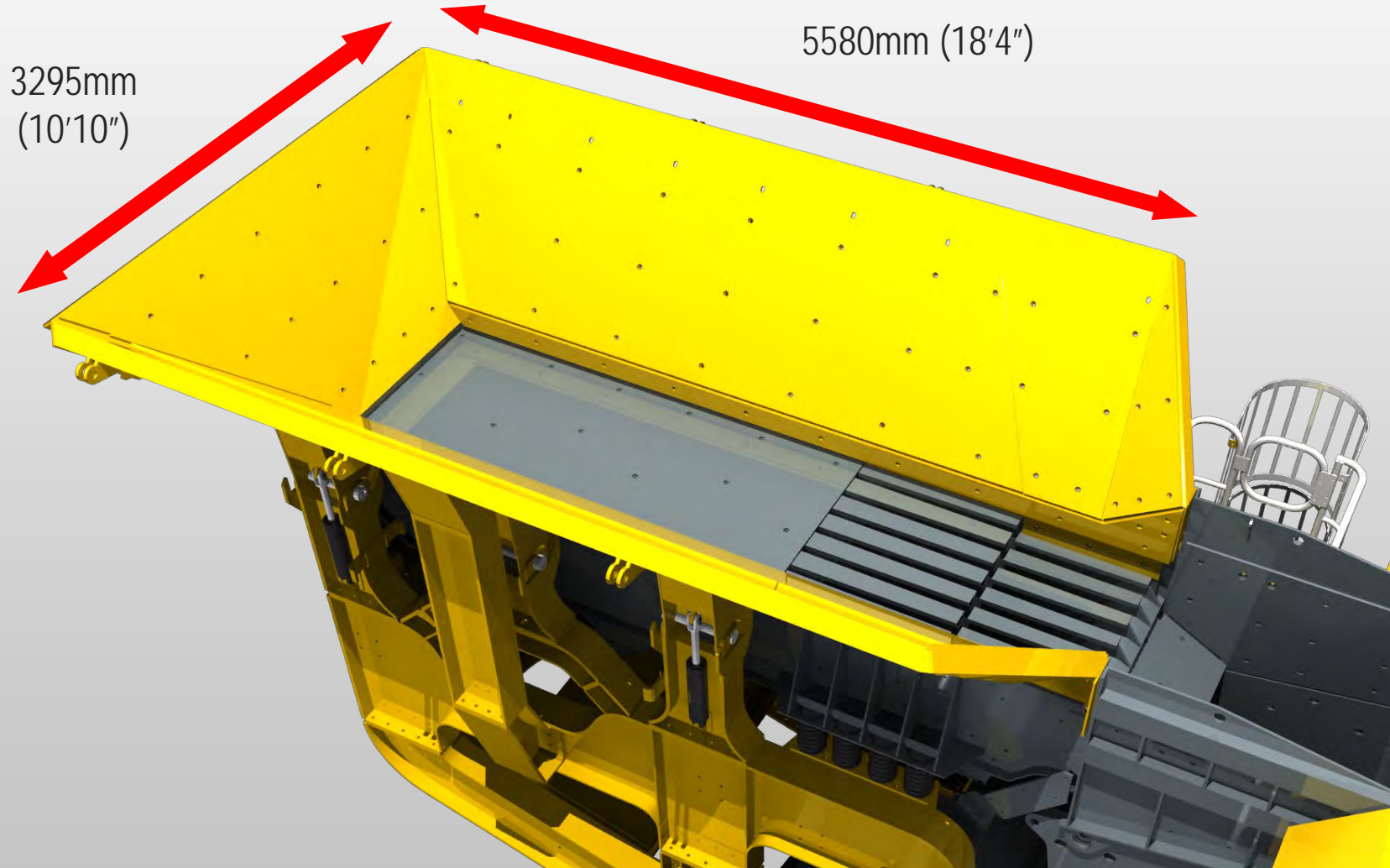
Fabricated from either high quality  
Wear resistant steel plate or mild  
steel utilizing wear resistant liners

Feeder Liners to protect the  
hopper from excessive wear

Easy to replace



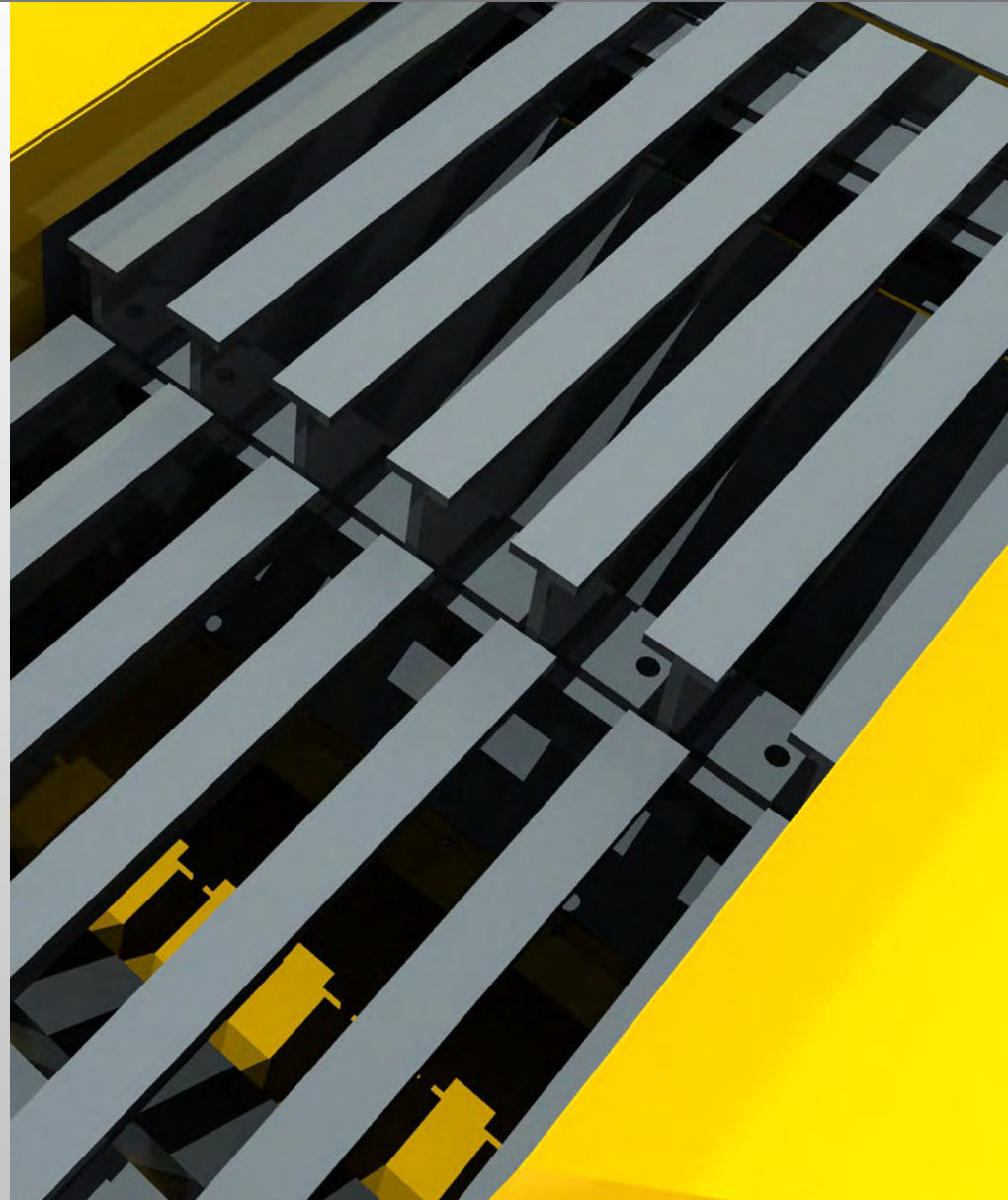
## Feed Hopper Dimensions





## Grizzly Feeder

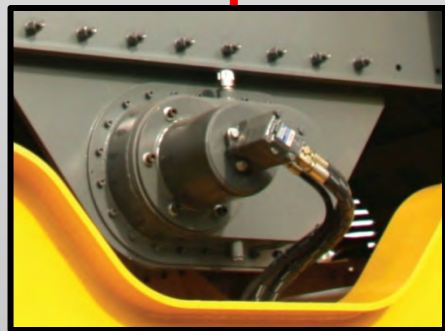
- | Fabricated from wear resistant steel
- | 75mm (3") nominal spacing
- | Two stepped bolt in grizzly cartridges
- | Wear resistant steel floor plate liners
- | Twin shaft exciter coupled with hydraulic motor
- | Variable speed control
- | Bolt in blanking plates
- | Bottom deck media (Blanking mat for Pre-screen Bottom Deck)



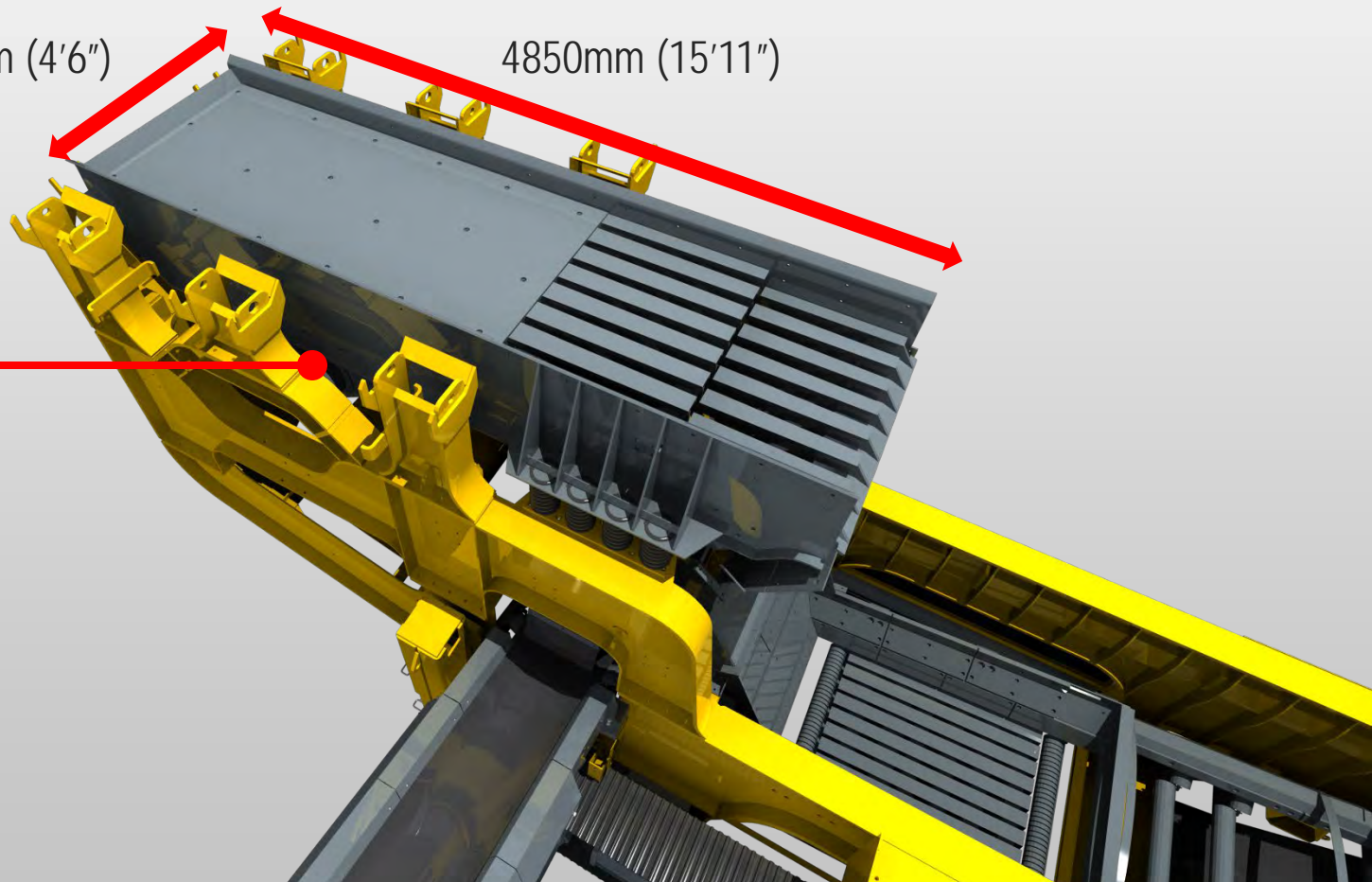
## Grizzly Feeder Dimensions

1380mm (4'6")

4850mm (15'11")



Hydraulic Motor



## Grizzly Feeder

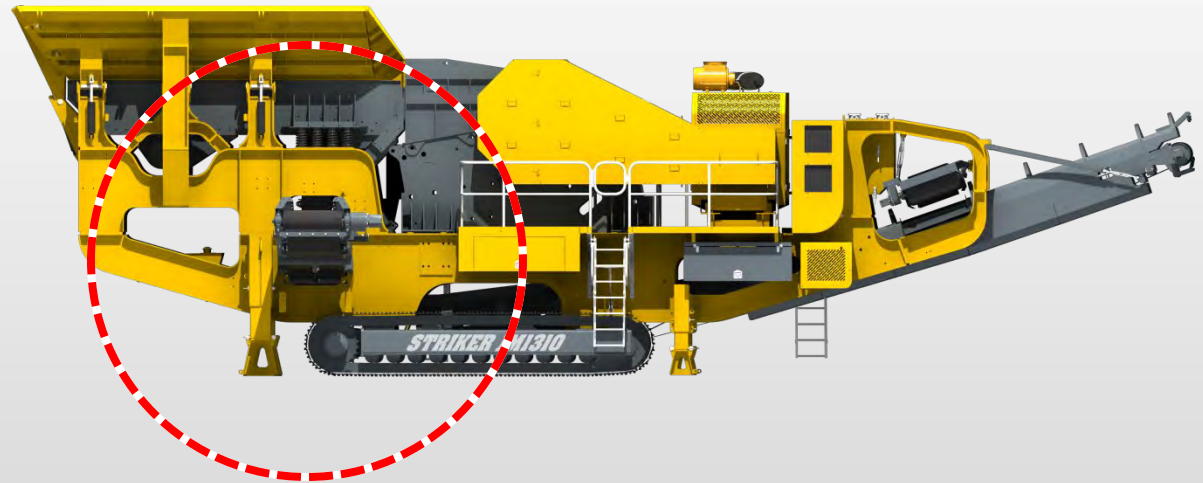
Wear Resistant Liners

Self Cleaning Stepped Cartridge





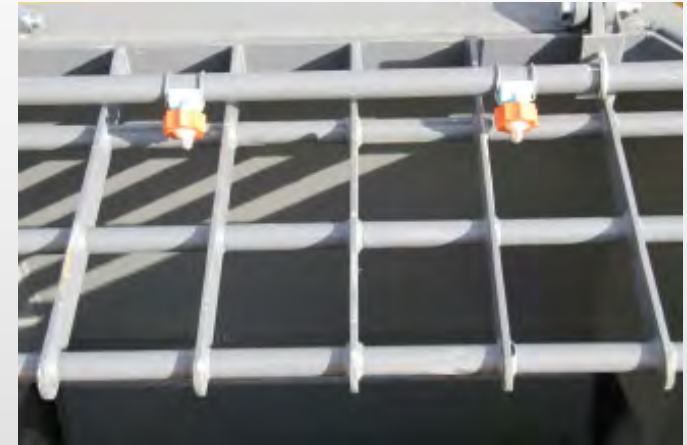
## By-Pass Chute



By-Pass chute removes natural fines from the feed material and discharge onto the "Side Discharge Conveyor"

The lever operates a two way door for diverting material either onto the "Forward Product Conveyor" or the "Side Discharge Conveyor"

## Jaw Crusher Protection Grid

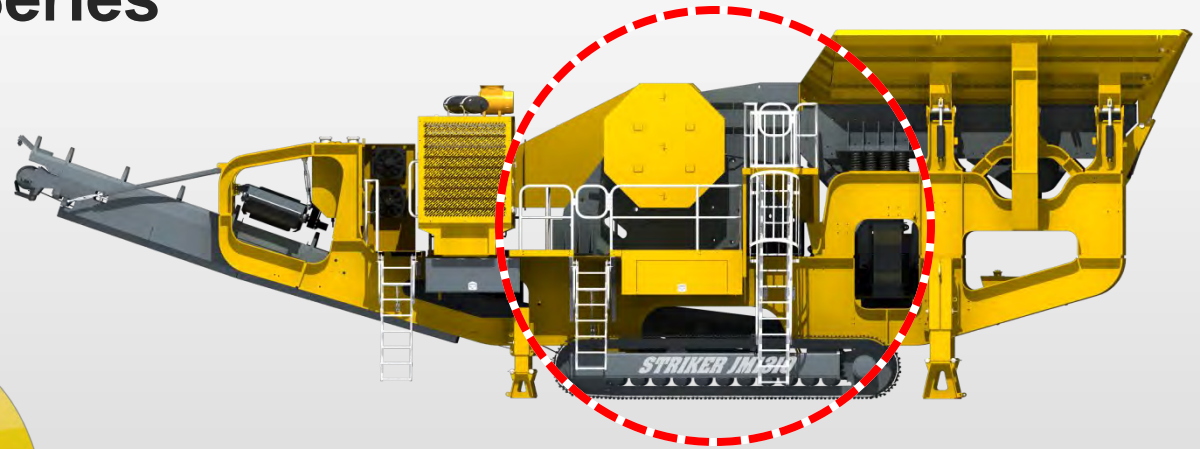
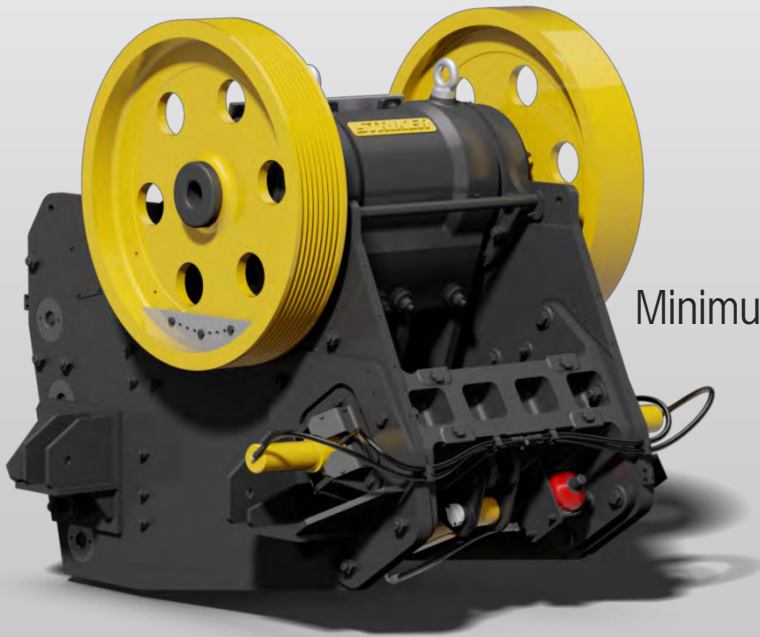


Reinforced to withstand high forces  
potentially ejected from the jaw  
crusher chamber

Increased operator safety

Hinged joint easy access to the  
jaw chamber when required

## Jaw Crusher – J Series



1250mm x 950mm (50" x 37") feed opening

Minimum closed Side Setting 100mm (4") - (hydraulically adjusted  
- factory pre-set)

Maximum Closed Side Setting 275mm (11")

Single toggle jaw with hydraulic adjustment

Standard saw tooth jaw plates



## Main Frame



Four Piece Heavy-duty Structure Fully Bolted And Dowelled.

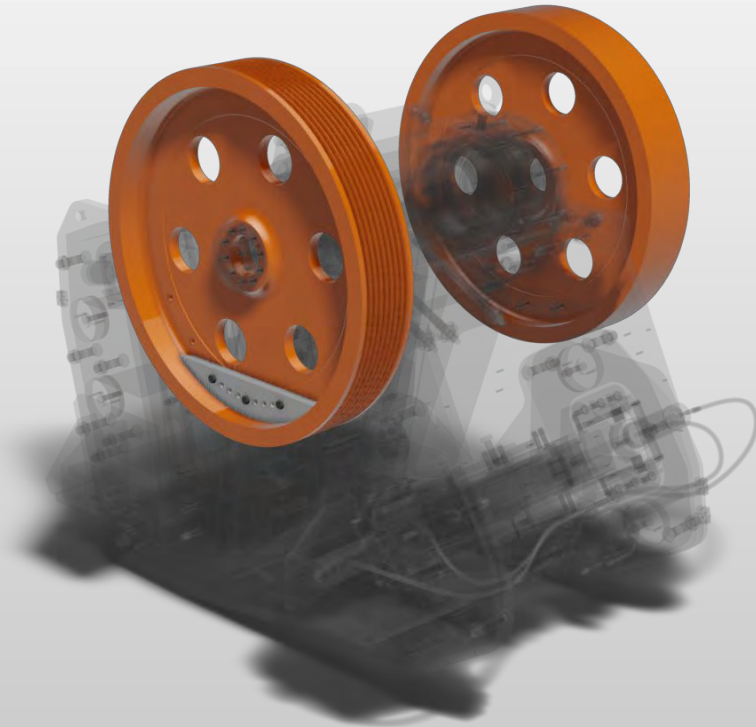
Fully Machined Contact Surfaces To Assure Optimum Load Distribution.

High Strength Cast Steel Front And Rear Frames.

High Strength Structural Steel Body Side Plates

Versatile Mounting Feet Arrangement To Suit Any Application.

## Heavy Duty Flywheels



Dynamically Balanced To Reduce Vibrational Resonance With Mounting Structures And Chassis.

Engineered Size And Weight To Obtain:

- Low Peak Power Requirements
- Increased Feed Rates With No Reduction On Performance
- High Efficiencies

## Performance

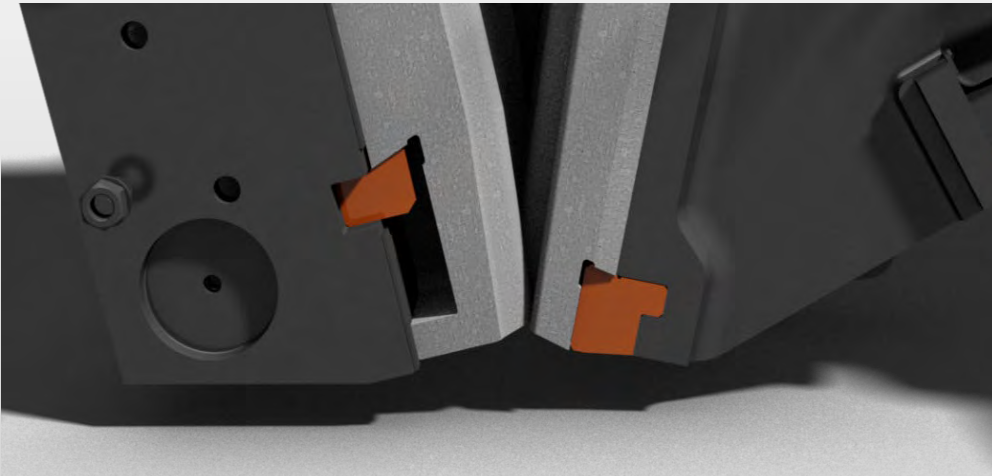


### 1 ½" STROKE

- High Compression
- Increased Throughput
- Extra Relief

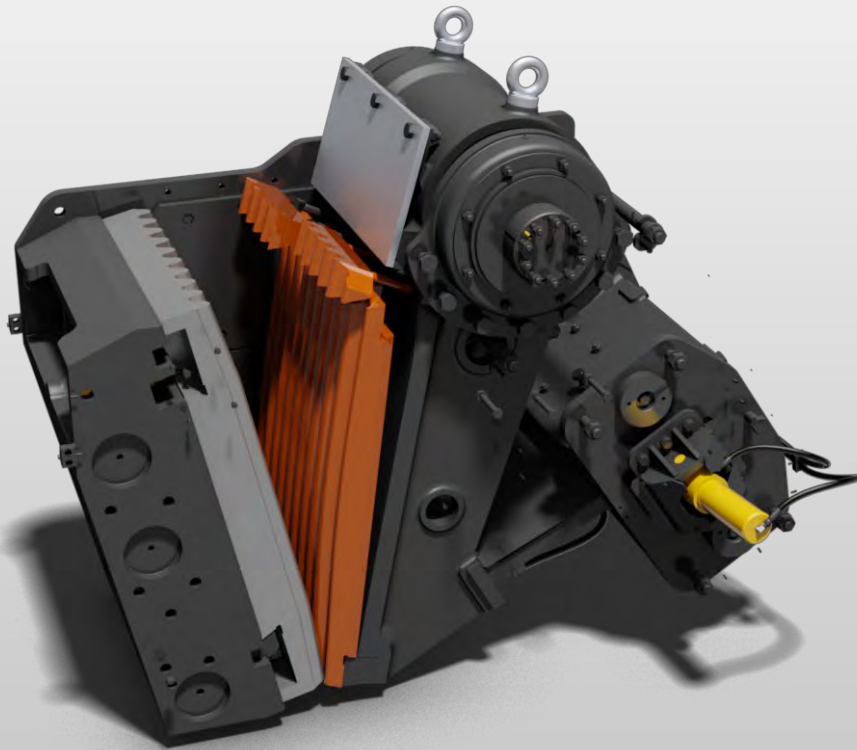


## Replaceable Lower Jaw Die Seats



- | Easy To Replace Jaw Die Seats
- | Prevents Failure And Wear Of Cast Parts

## Jaw Liner Replacement



Easy Jaw Liner Replacement

- Significantly Reduces

Maintenance Downtimes

- Fully Reversible Liners

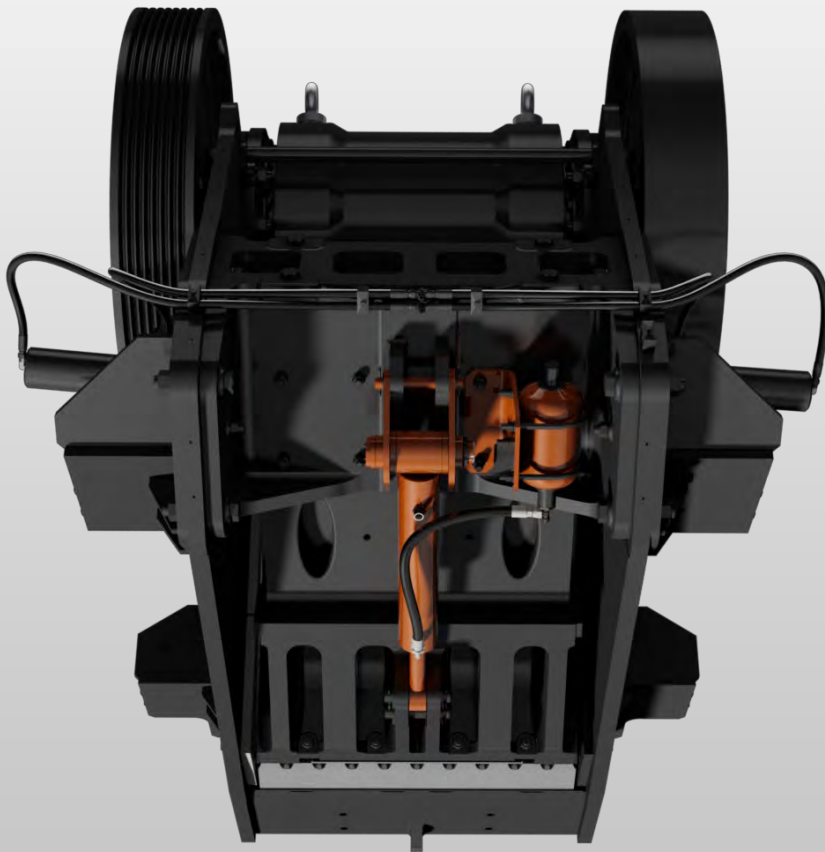
## Dual Wedge Adjustment



- | Hydraulically Operated CSS Adjustment
- | No Additional Setup Required
- | No Extra Parts To Be Adjusted
- | Opening And Closing Actions Operated From Control Panel



## Hydraulic Toggle Tensioning System



- High Toggle Tensioning Force

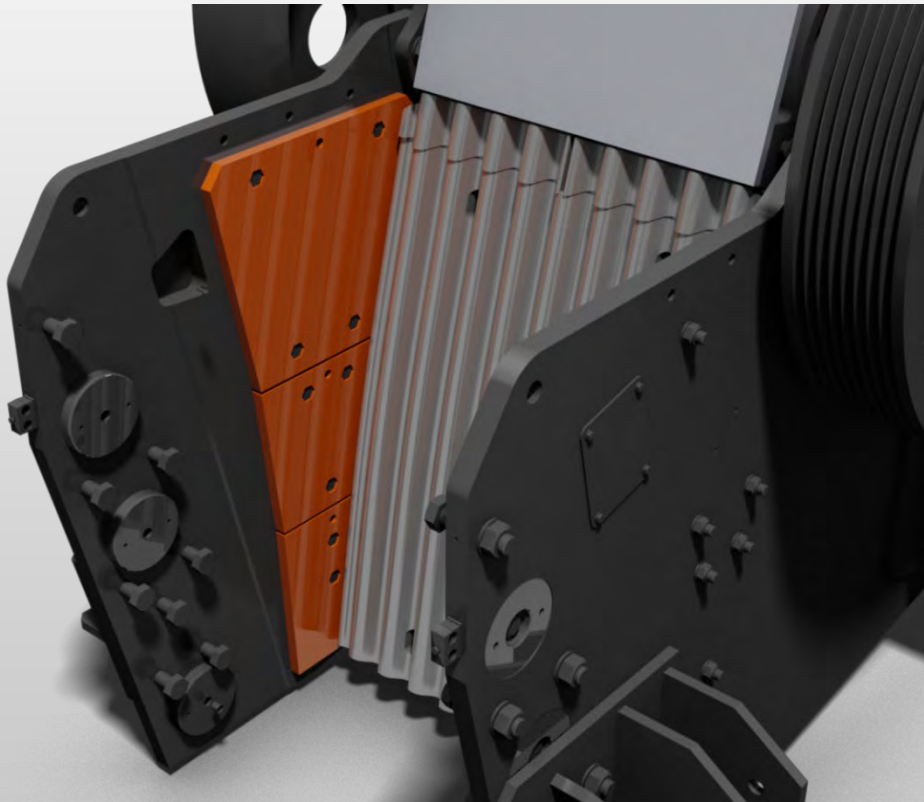
- Automatic Adjustment When Changing CSS

- High Reliability Hydraulic Cylinder With Special Sealing Arrangement

- Toggle Pressure Monitoring From Control Panel

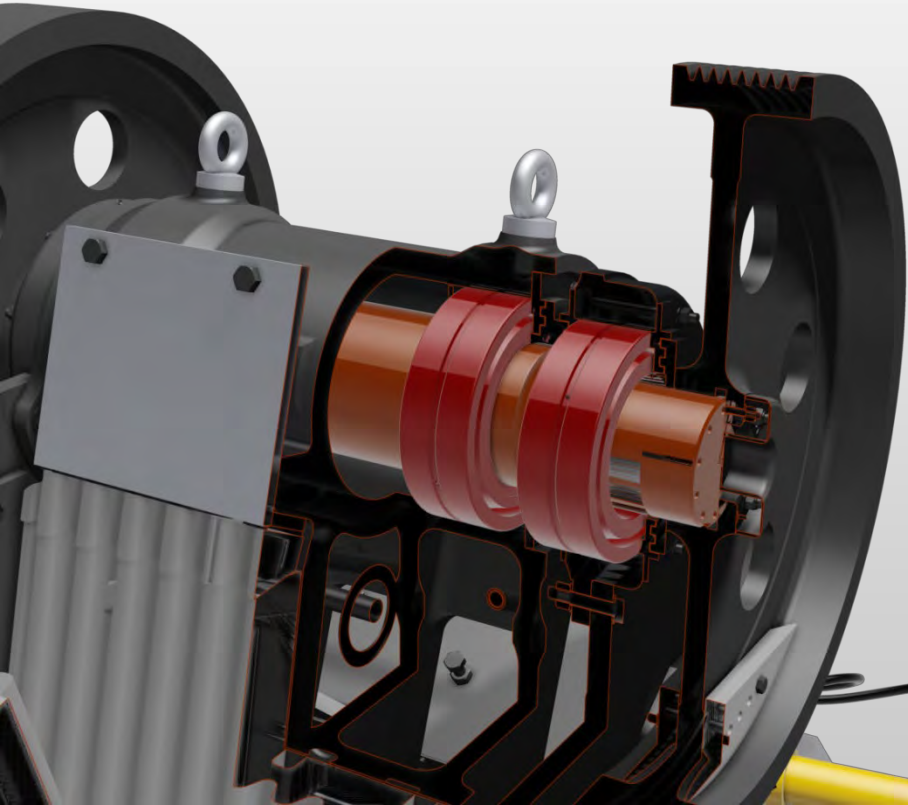
- Automatic Pressure Drop Detection Allows Crusher To Stop Before Damaging Parts

## Body Side Liners



- Replaceable 3-piece Liner Plates
- Made From High Manganese
- Alloy Steel For Outstanding Wear Resistance

## Shaft Assembly



High Quality Nickle-chrome Forged Steel Shaft Machined To The Tightest Tolerances

Non-contact Labyrinth Seals

Best Quality Spherical Roller Bearings



## Jaw Crusher Drive



Dedicated oil cooler for fluid coupling |

Quick easy belt tensioning |

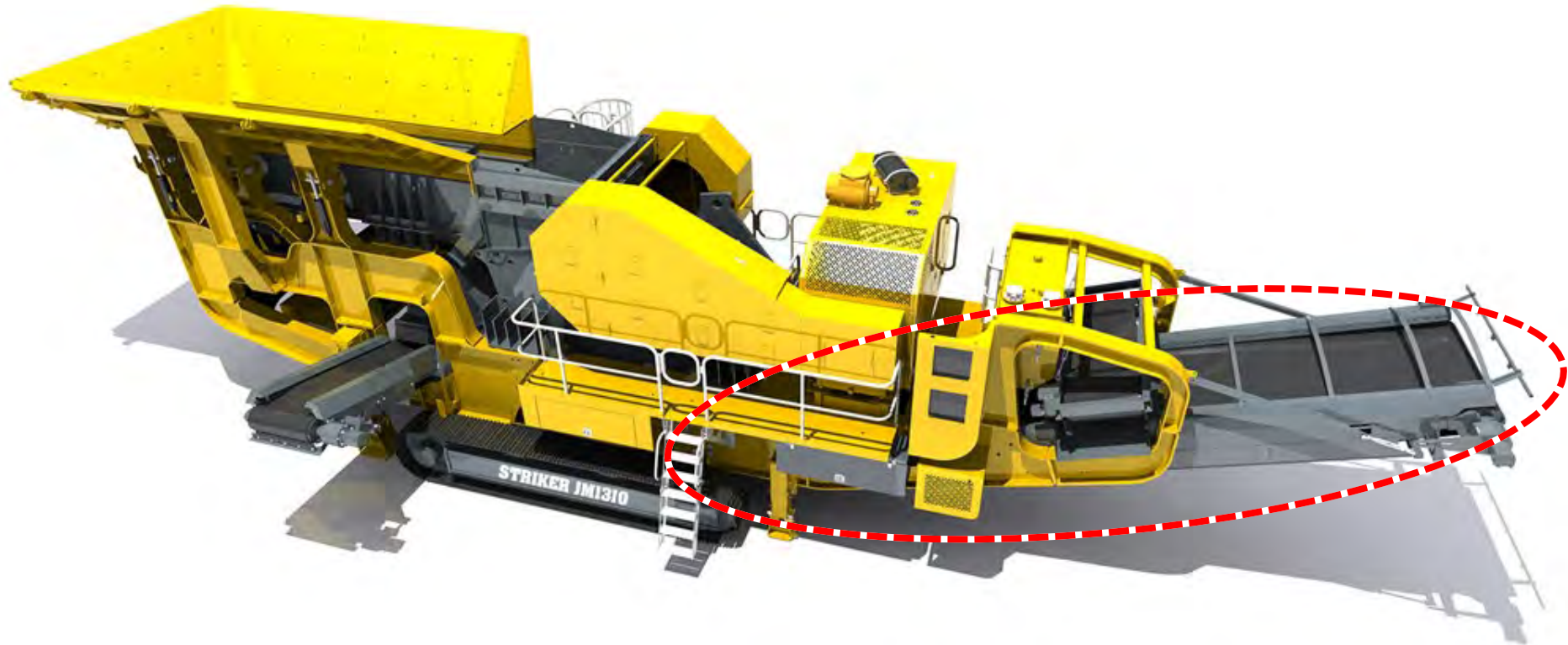
Externally mounted and easily maintained |

Smooth start up, no belt slip |

Shock & overload protection |

No friction linings creating longer life utilization |

## Forward Product Conveyor



## Forward Product Conveyor

Clearance between the forward product conveyor and the jaw crusher approx. 550mm (1'10")

Heavy duty extra wide belt 1500mm (60") wide

Wear resistant liners at the jaw discharge

Rubber impact rollers to prevent damage to the belt

Fully skirted conveyor belt to reduce spillage





## Conveyor Guards

- | Quick release system for maintenance
- | CE Compliant
- | Safety against moving & rotating parts



## Forward Product Conveyor

- Hydraulic drive at the head drum
- Belt cleaner located at after the discharge point to ensure that sticky material is removed preventing tracking issues
- Greasing lines to the head drum
- Self-aligning spherical roller bearings
- Lagged head drum to prevent belt slippage



## Central Greasing Point

- | Central greasing point
- | Robust, durable greasing lines, not plastic
- | Located at ground level
- | Saves on maintenance time



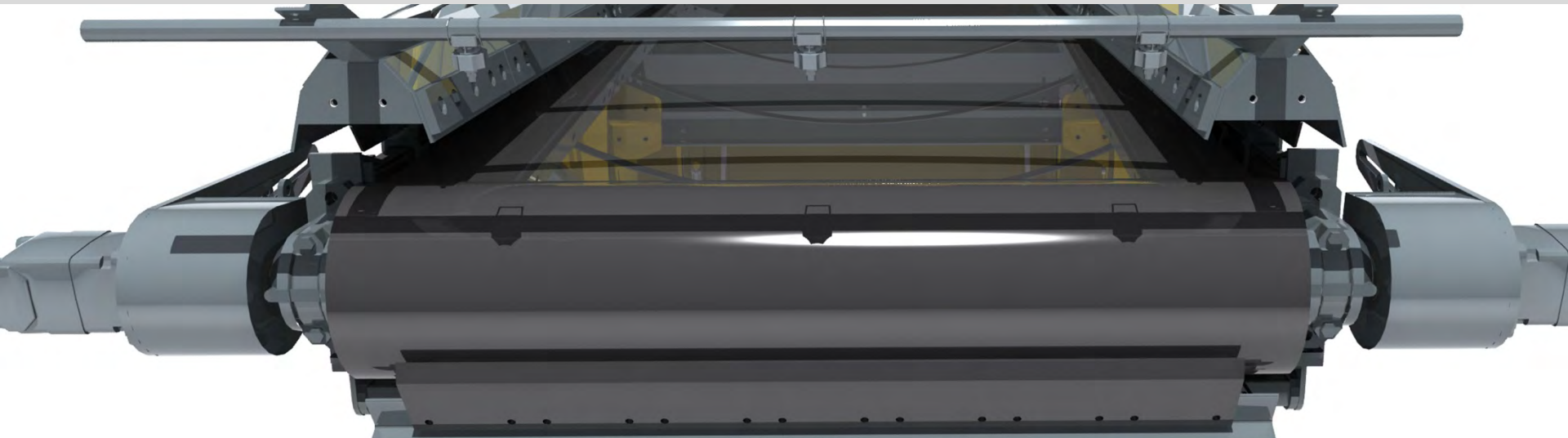
## Dust Suppression

Environmentally friendly on-board solution to dust control from the impact crusher

Dust Suppression in two isolated locations

1) Impact crusher discharge chute

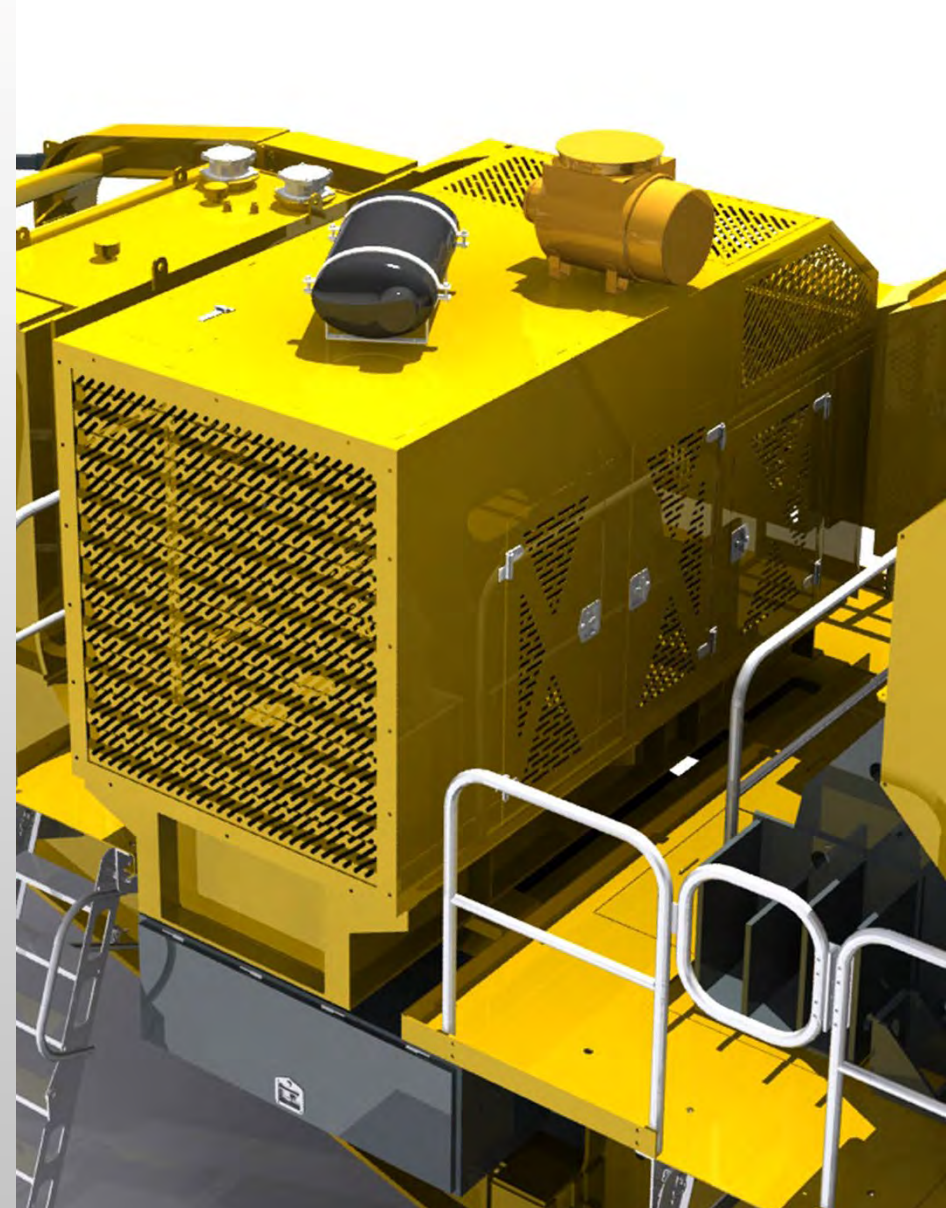
2) At the top of the product conveyor





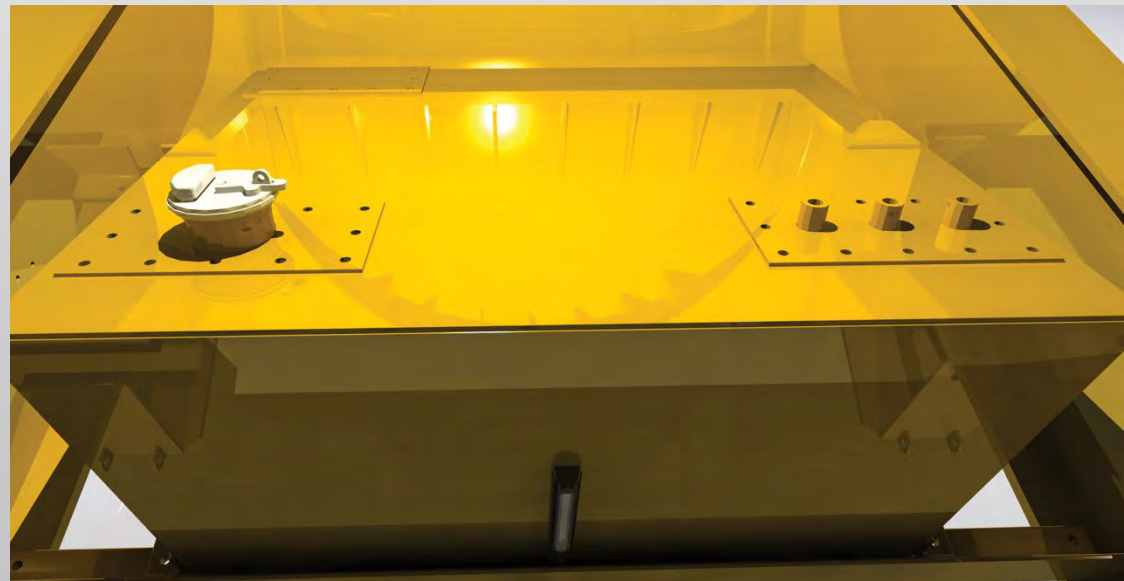
## Powerpack

- Powered by a CATERPILLAR® C13 Acert Stage 3 engine rated (328kW)
- Engine complies with all current emission laws
- Hot climate oils (Recommended for ambient temperatures between +15 to +50°C)
- Easy access for maintenance via 3 panel doors and generous working platforms
- Easy to maintain, reliable and efficient
- Load sensing hydraulic pumps to maximise fuel efficiency



## Fuel & Hydraulic Tank

- 820 litre (180.4 gal) standard capacity fuel tank or option to increase to 900 litre (238 gal)
- Hydraulic oil filtration system and air filter

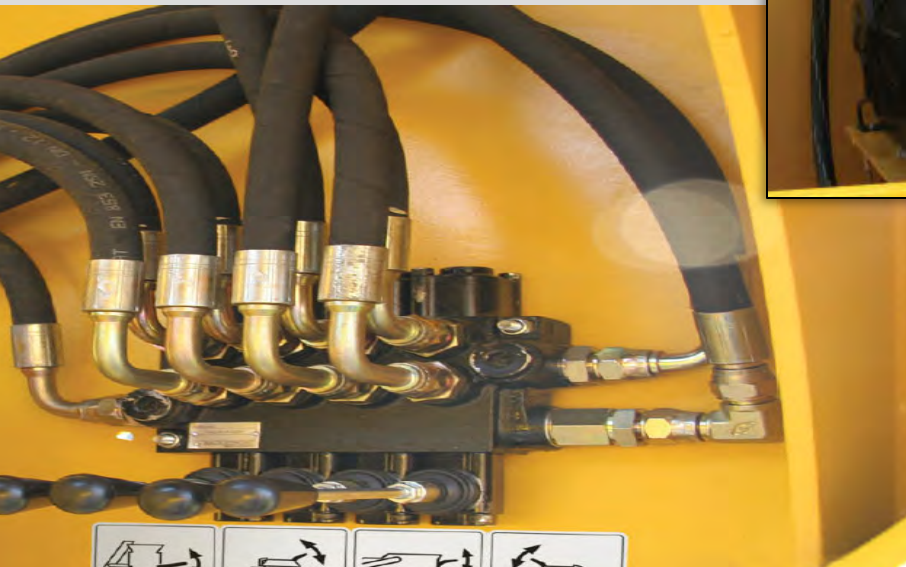




## Hydraulic Components

Easy access to hydraulic components for maintenance

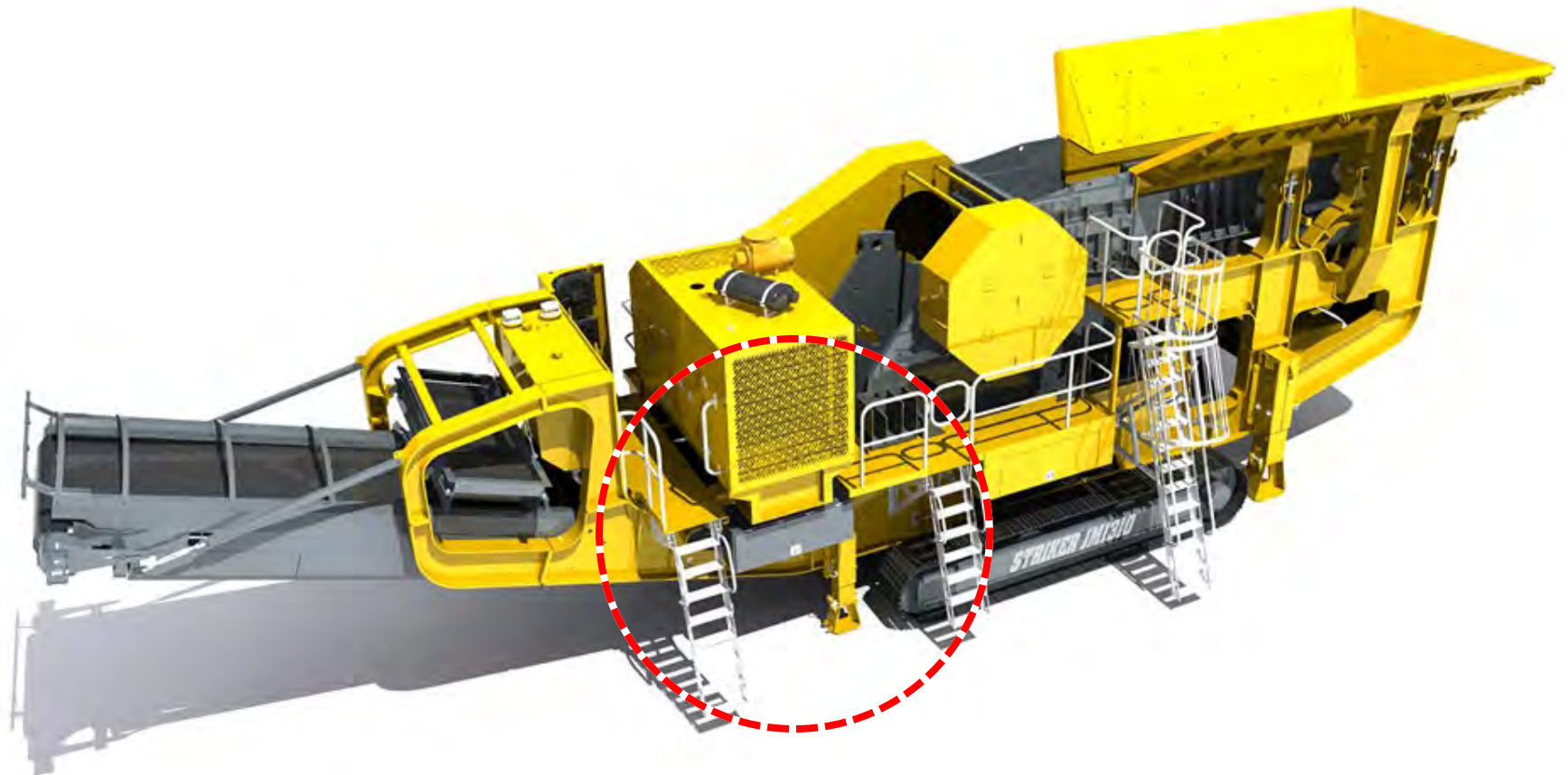
Simple ON/OFF hydraulic blocks



The hydraulic system powers

Crusher, tracks, hopper wings and hopper locking system, forward & side conveyors, vibrating grizzly feeder

## Controls





## Controls

- Simple user friendly screen
- Ability to change the displayed language  
English, Mandarin, Bahasa, Afrikaans in  
the HMI settings
- Clearly marked diagrammatic display



Ability to switch between metric and standard imperial units of measurement

Rugged CAN based modular I/O

Low voltage 24v system

Sealed IP54 cabinets to prevent the ingress of dust & water

## Remote Control Unit

- | Battery level indicator (on the display)
- | Signal strength indicator (on the display)
- | Proportional control of the tracks
- | Steer mode
- | Tramming mode
- | Feeder ON/OFF and speed control
- | Radio remote control unit
- | Striker optimax engine and feeder controller
- | Charging via a cigarette lighter plug 12/24vdc
- | A charging/storage dock mounted on the machine so it's always on hand and full charged



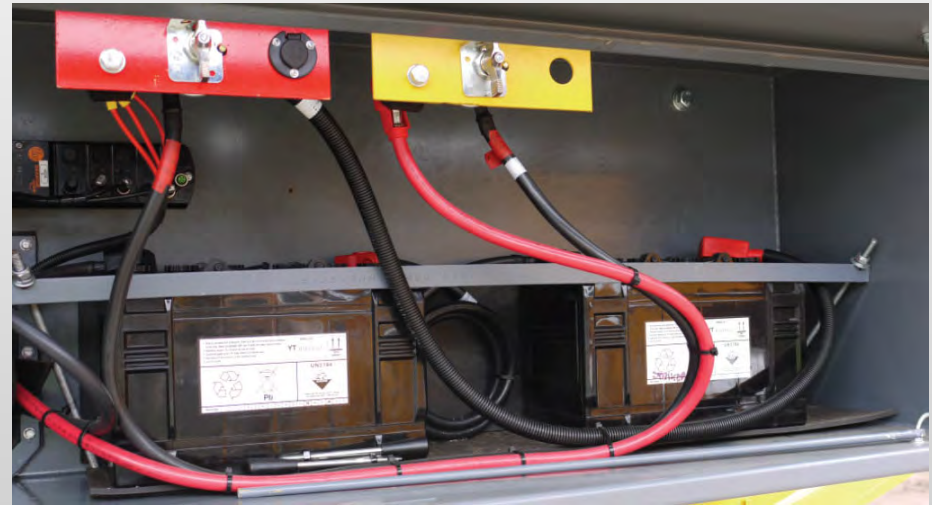
## Battery Maintenance Access

Service access to the batteries

Location for isolation during maintenance and welding on plant:

Two Isolator available:

- 1) Battery isolator
- 2) Starter motor isolator for testing controls & electrical system with the engine isolated



## Manual Hydraulic Controls

Clearly marked manual hydraulic levers power the following and are easy to operate and allow for quick set-up of the plant:

Hopper sides

Hopper securing pins

Side discharge Conveyor





## Tracks

Hydraulically driven  
crawler tracks

Track centres 4168mm (13'8")

Track shoe width 500mm (1'8")

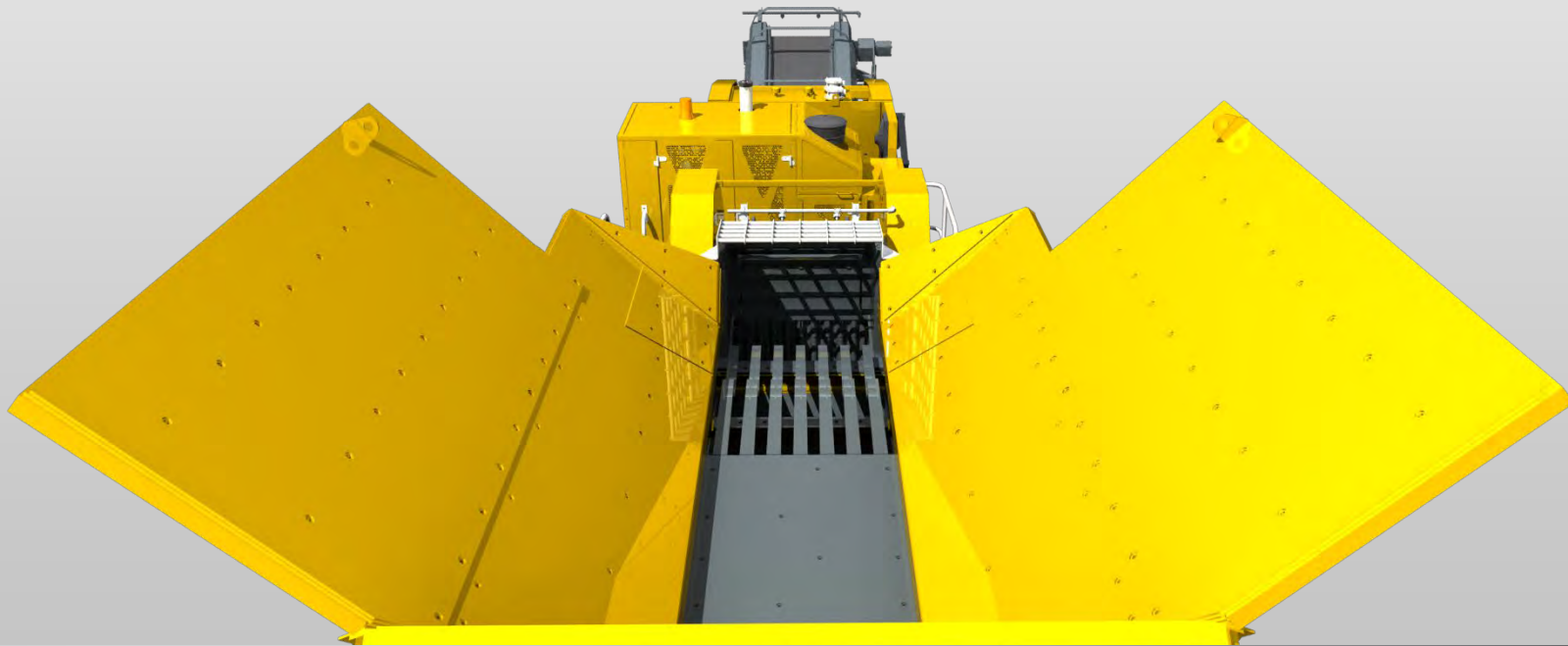


## Options

- | Wear resistant steel hopper liners
- | Feed hopper extension wings
- | Centralised lubrication system
- | Product conveyor dust covers
- | Impactor high speed conversion
- | Hydraulic water pump
- | Overband magnet
- | Side discharge conveyor
- | Pan feeder under crusher
- | Arctic package for operating conditions – 20 ° C
- | Desert package for operating conditions + 50 ° C
- | Plant lighting tower
- | 3 meter air extension kit for engine air cleaner
- | Dual drive forward conveyor
- | 3 meter steel air intake snorkel with turbo pre-cleaner bowl

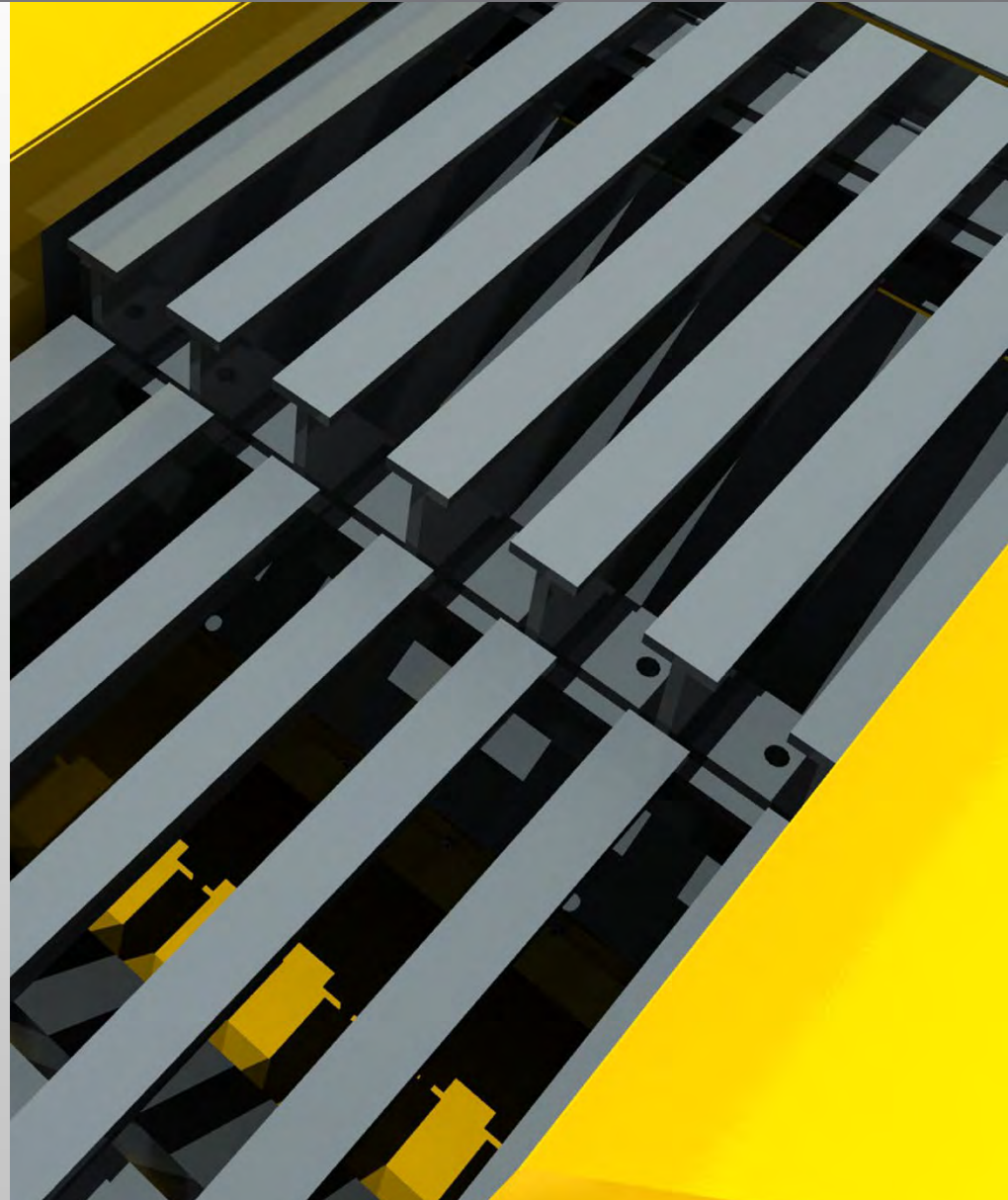
## Feed Hopper Extension Wings (Option)

- Heavy duty wear resistant steel feed hopper construction
- Hydraulically operated folding side and rear wings
- Reinforced box section webs
- Rapid set up time



## Grizzly Feeder (Option)

- Grizzly cartridges with 90mm (3.4") nominal spacing
- 2 deck live Pre-screen c/w Pan Feeder instead of Vibrating Grizzly Feeder, Hydraulic folding feed hopper sides and rear an hydraulic locking mechanism
- Top Deck Mesh Cartridges: Please specify Mesh Size:
- Wire mesh for Pre-screen (Please specify size: 10, 20, 30, 40, 50mm)





## Stacker Outlet (Option)

To run Striker radial stacking conveyor

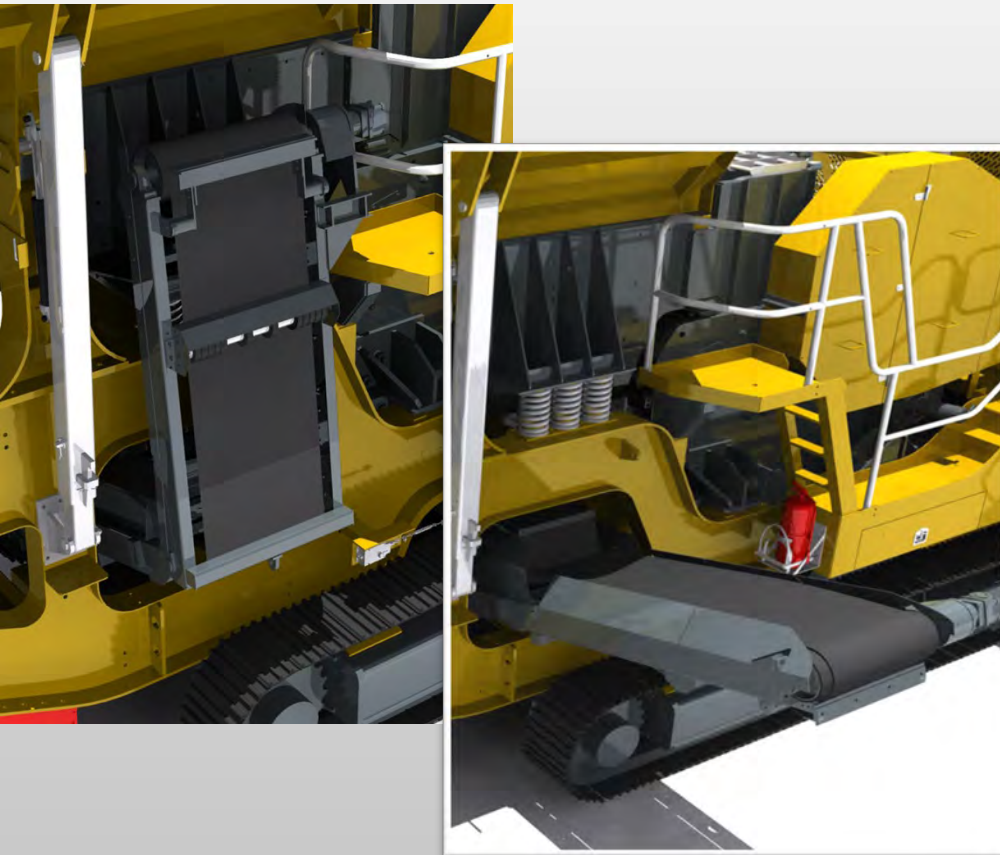


## Overband Magnet (Option)

- Designed to separate any steel material from the crushed rock or demolition waste
- Variable belt speed
- The magnet is height adjustable and can be lowered or raised to suit any application
- Magnet preparation c/w hosing, shedder plate and mounting bracket
- Single pole magnet c/w hosing, shedder plate and mounting bracket
- Twin pole magnet c/w hosing, shedder plate and mounting bracket



## Side Discharge Conveyor (Option)



Hydraulically folding side discharge conveyor

The by pass chute transfers removal of fines on to the side discharge conveyor

2.6m (102") discharge height, can be extend to 750mm (30") discharge height as optional

750mm (2'6") wide belt

Folds in uniquely under the hydraulically folding side hopper when in transportation



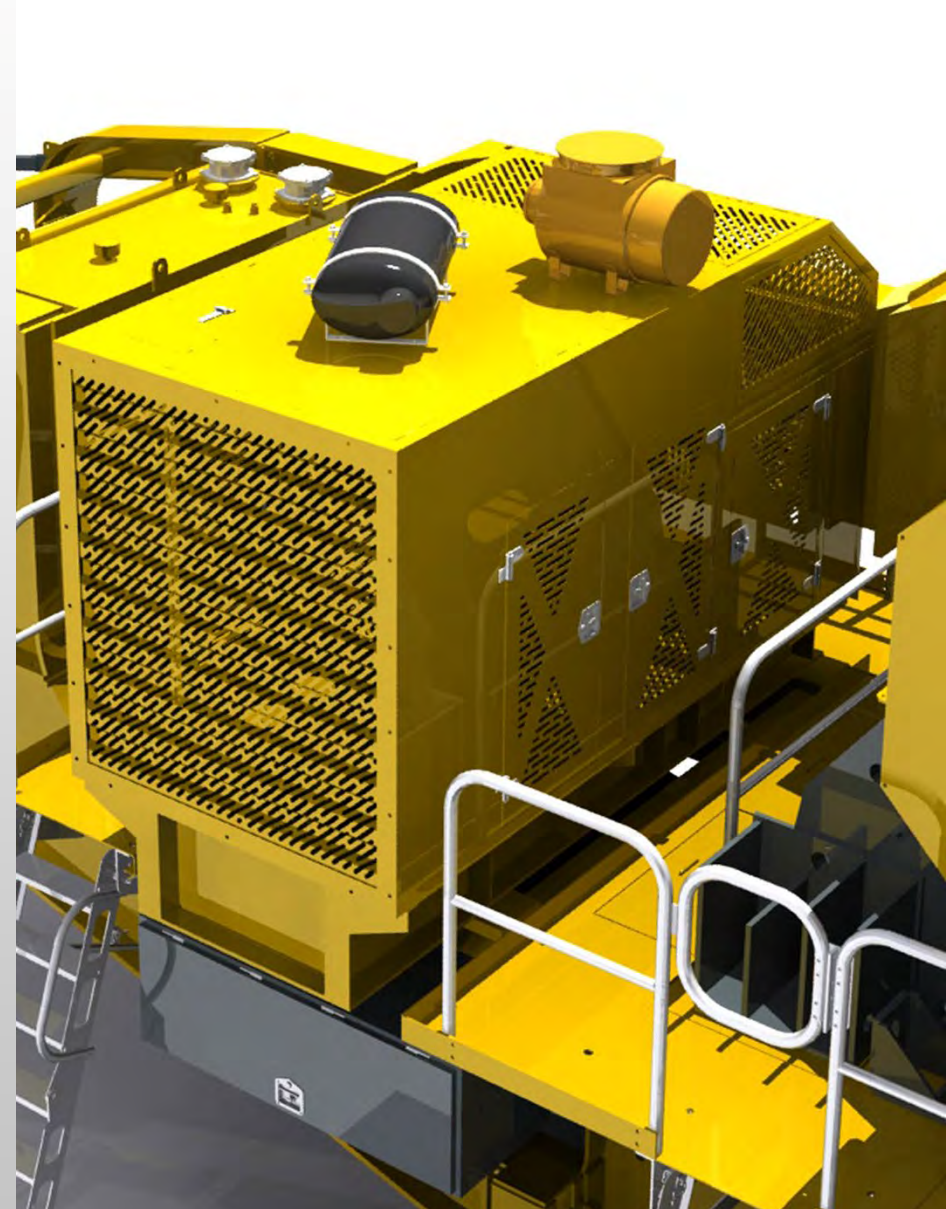
## Powerpack (Option)

Powered by a CATERPILLAR® C13 LRC Stage 4 engine rated (328kW)

Radiator blast guards

Cold climate oils (Recommended for ambient temperatures between -20 to +30°C)

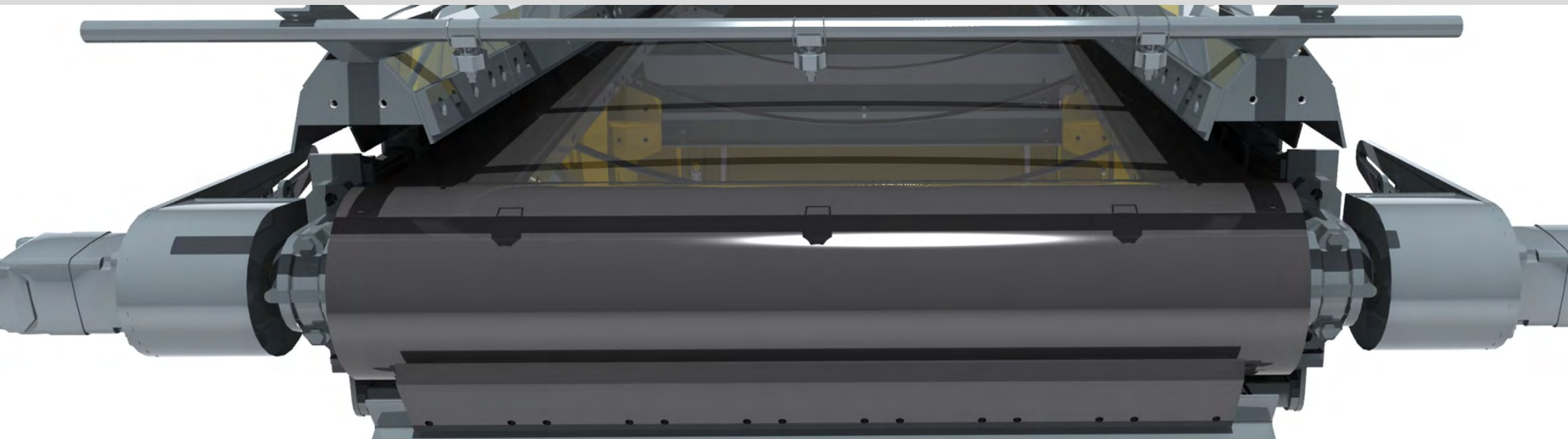
Plant lighting mast





## Dust Suppression (Option)

Water pump



## Remote Control Unit (Option)

- Umbilical remote control unit
- Control panel positive pressurisation



## Rock Breaker (Option)

- Highly adaptable
- High efficiency & performance
- High durability
- Low noise & vibration

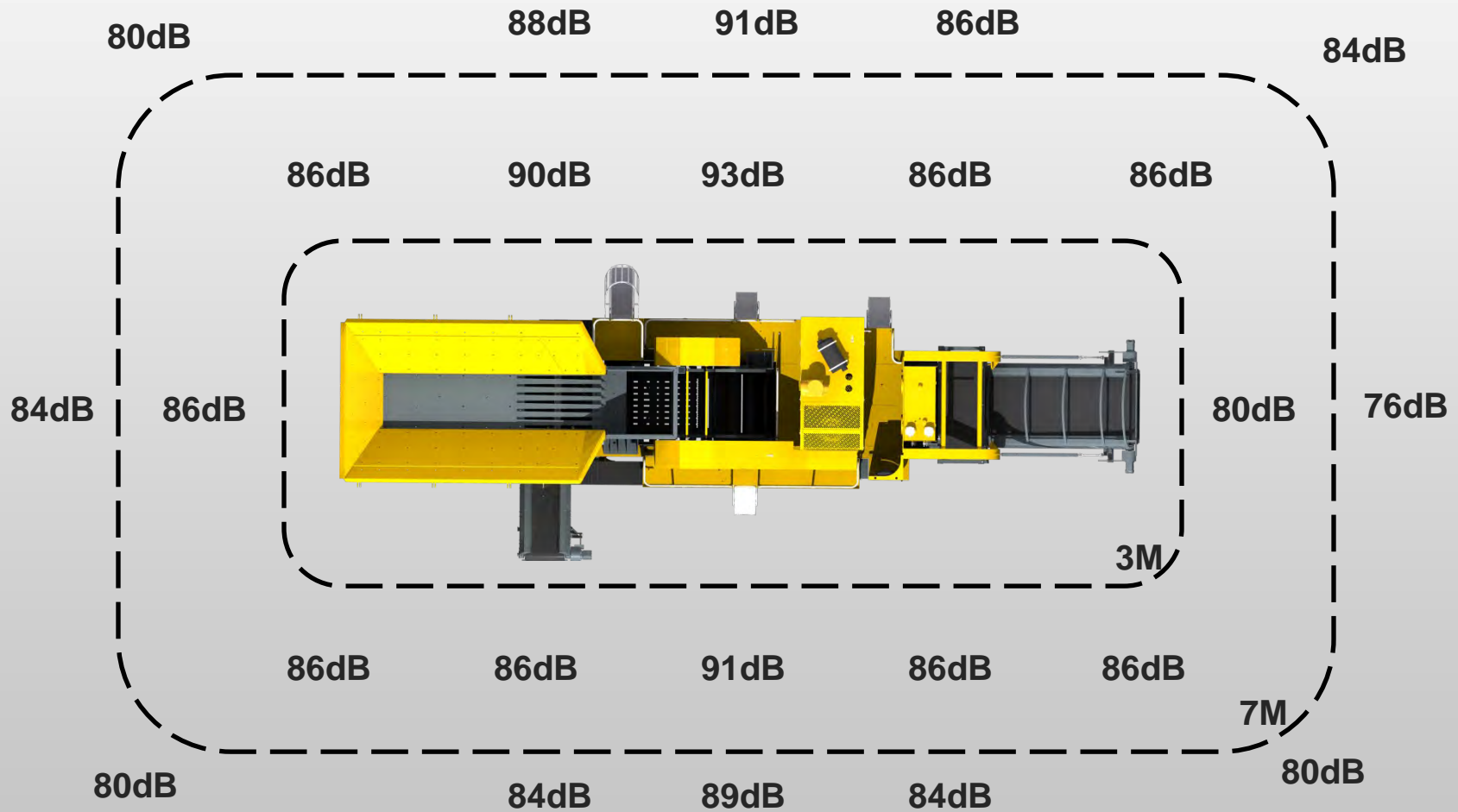


## Machine Safety Aspects

- | Nip point guarding
- | Remote greasing
- | Engine start delay and siren
- | Warning siren to alert the machine tracking and start up
- | Engine emergency stops



## Sound Levels



## Selling Features Summary

Strong, reliable, robust heavy duty body designed & engineered web & flange chassis, fully welded & fabricated from high grade steel to withstand the rigors of operation & transportation

Hydraulically folding feed hopper wings fabricated from wear resistant steel including hydraulically powered locking system

Self cleaning stepped grizzly with vibrating twin shaft exciter

Heavy duty crusher design with fully hydraulic adjustable setting and optional under-crusher deflector plate

CATERPILLAR® engine as standard, compliant to industry regulations

Heavy duty tracks suitable for any environment

Extra wide product conveyor with full length rubber side skirts utilising wear resistant steel clamp plates

Maximised discharged height for product stockpiling

Height adjustable, overboard magnetic separator

Water spray system fitted to the forward product conveyor and jaw opening