



www.strikercrushing.com



Mobile Crushing & Screening

SQ1863

Features & Benefits



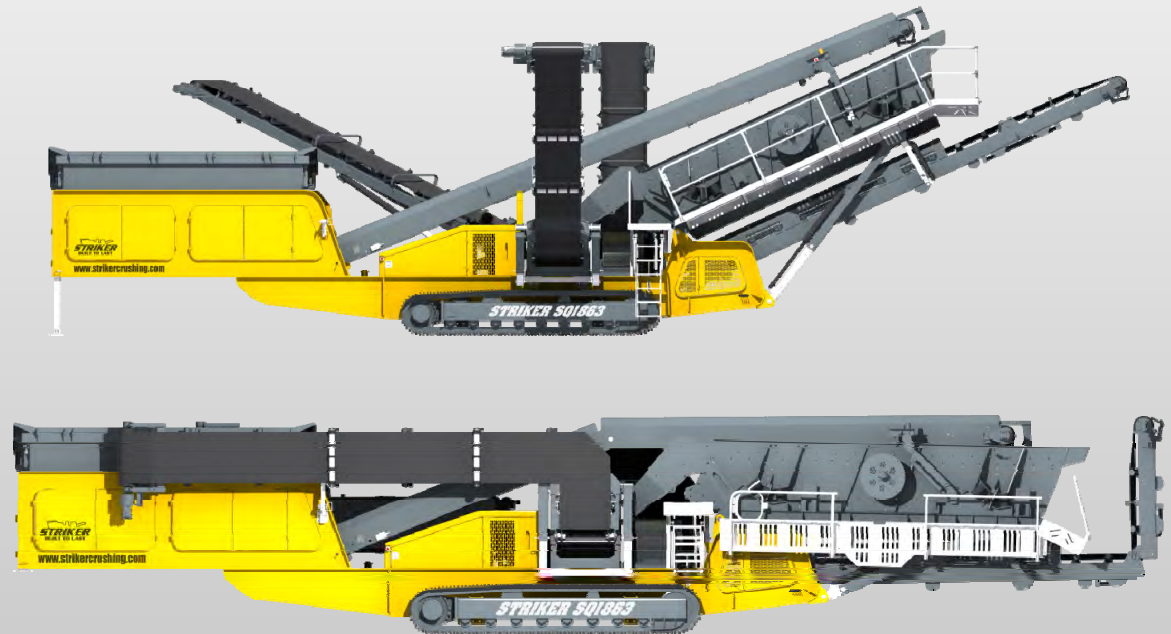
(SP02SI986-2001)

Tracked Screen SQ1863



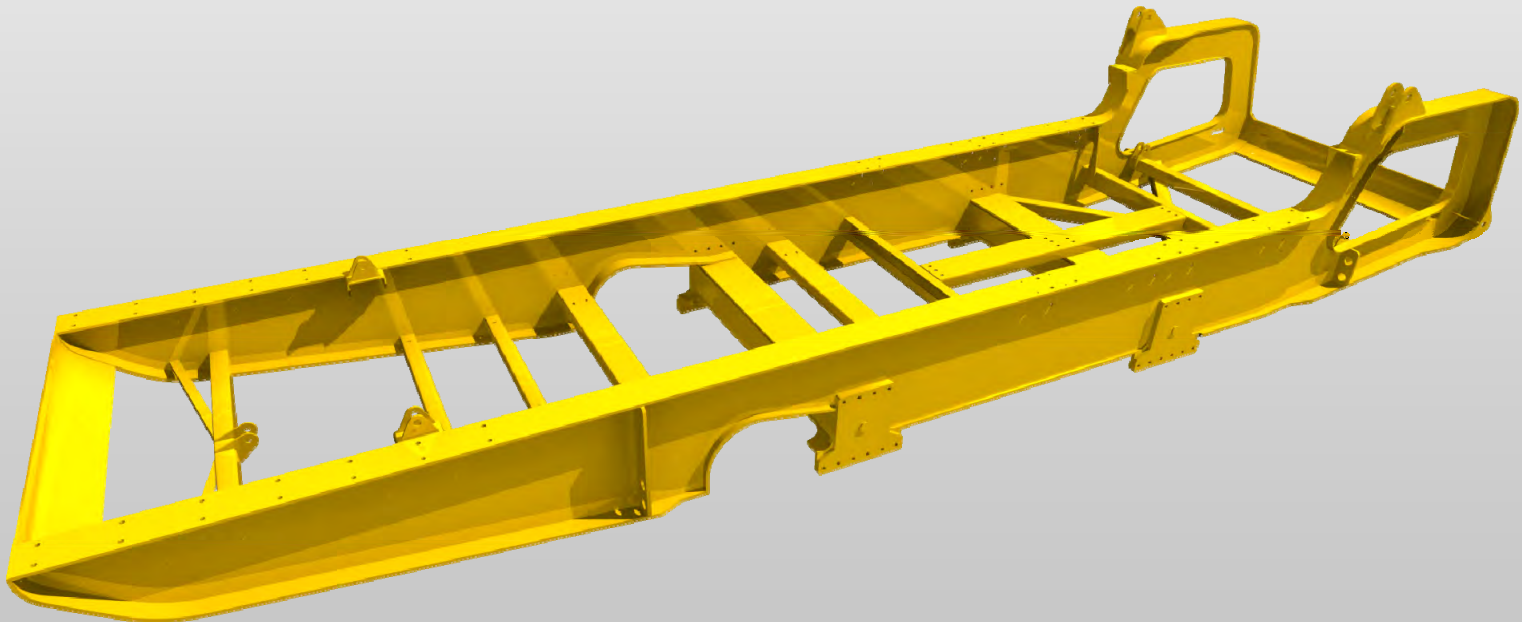
Transport Dimensions

SQ1863	
Operating Dimensions:	
	19990mm 65' 7"
	19040mm 62' 6"
	6625mm 21' 9"
Transport Dimensions:	
	18300mm 60'
	3200mm 10' 10"
	3650mm 11' 10"
Weight (T):	39T
Weight (lbs):	85,980lbs

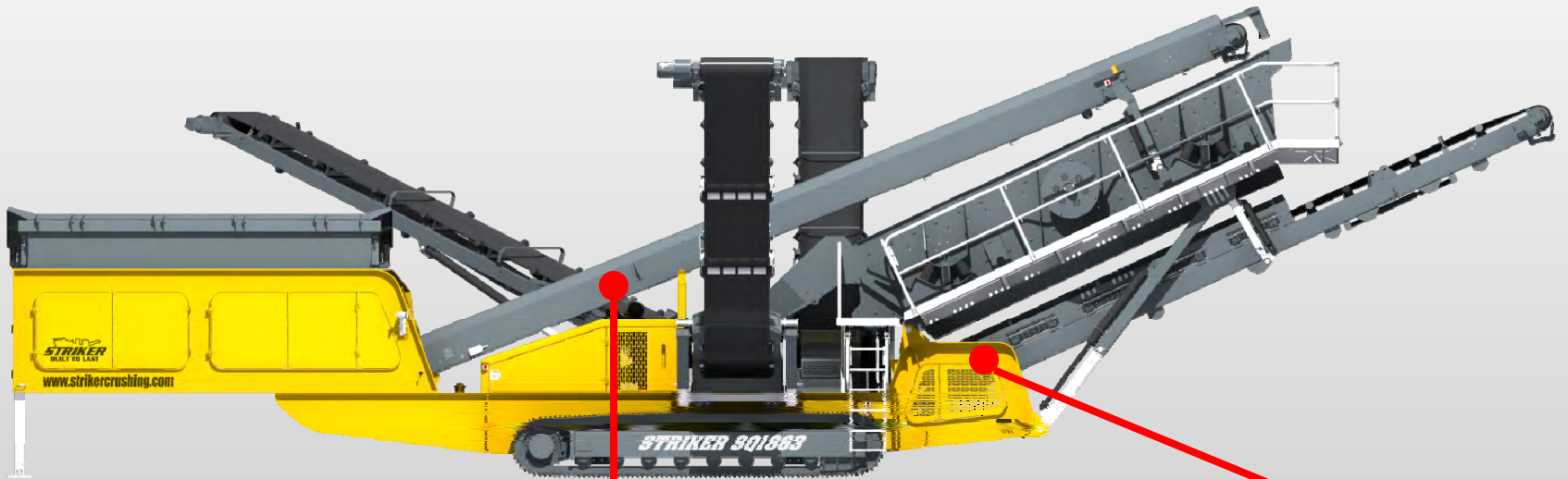


Chassis

Extra heavy duty body – welded robust steel chassis



Standard Paint (RAL)



RAL1007



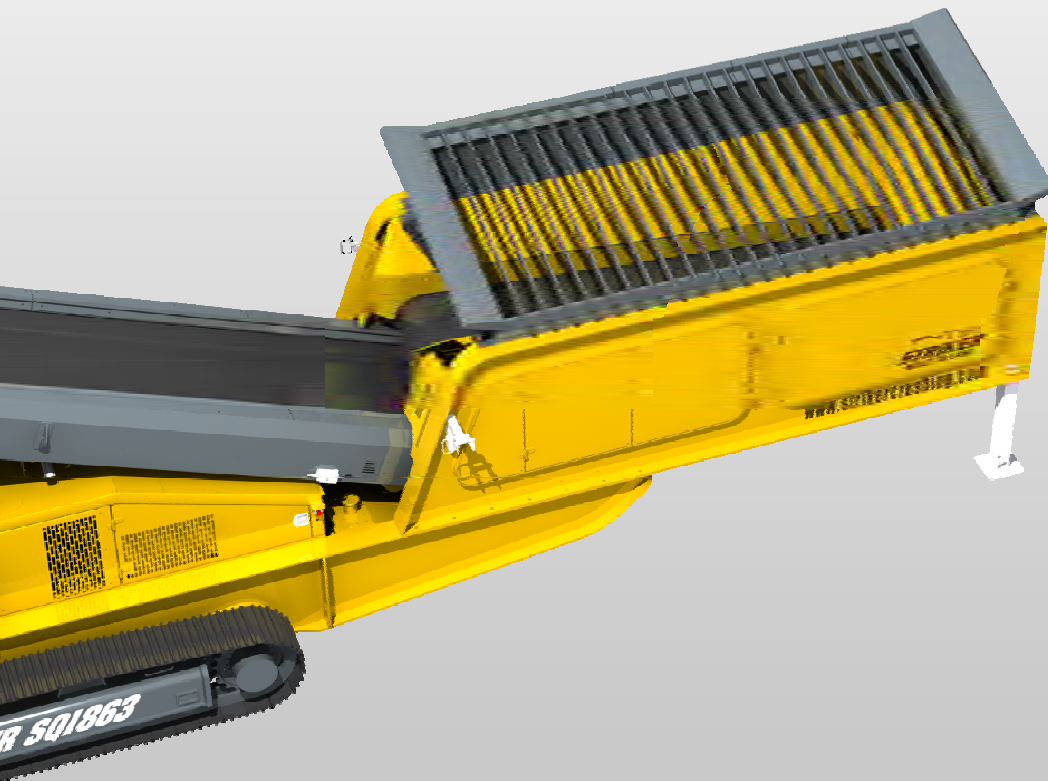
RAL7012



Vibrating Grid

Radio control tipping bofor steel |

Grid aperture: -150mm (6") |

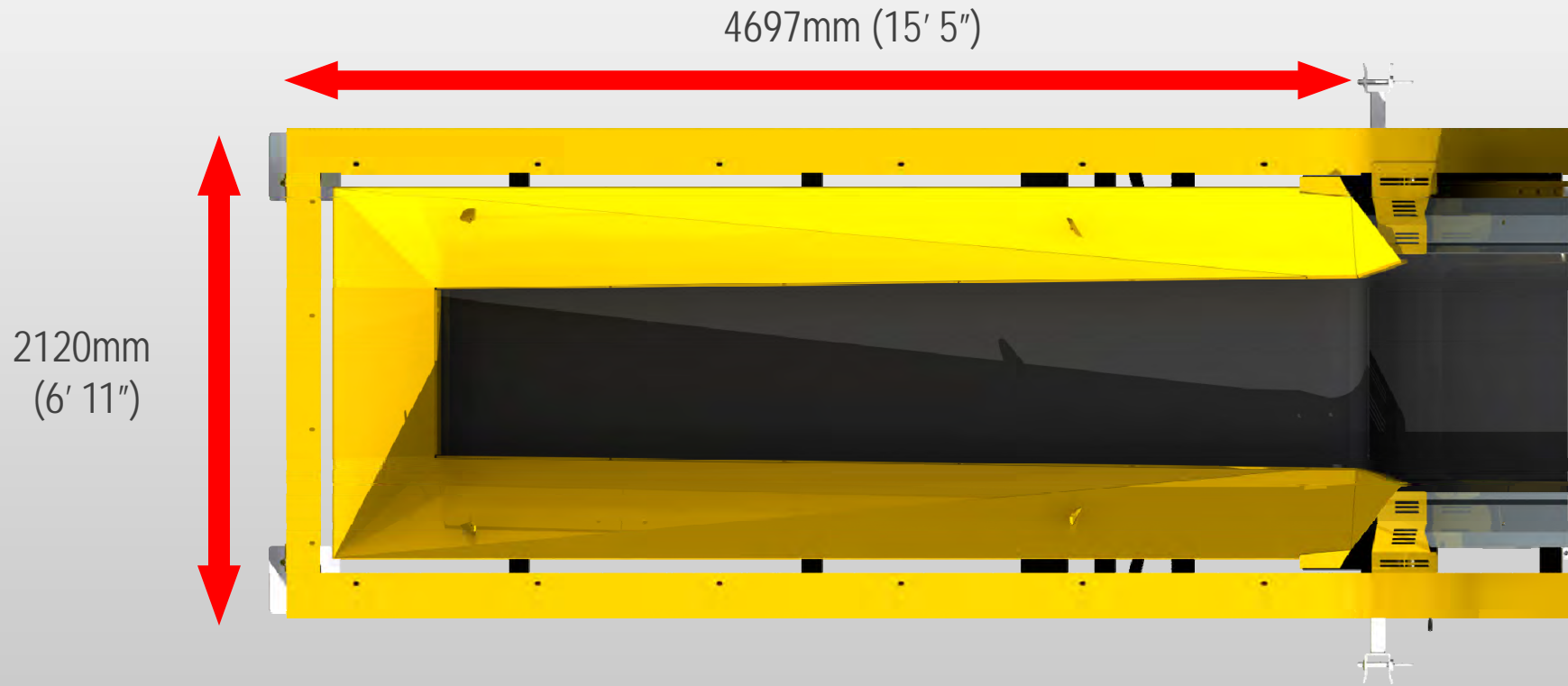


Feed Hopper

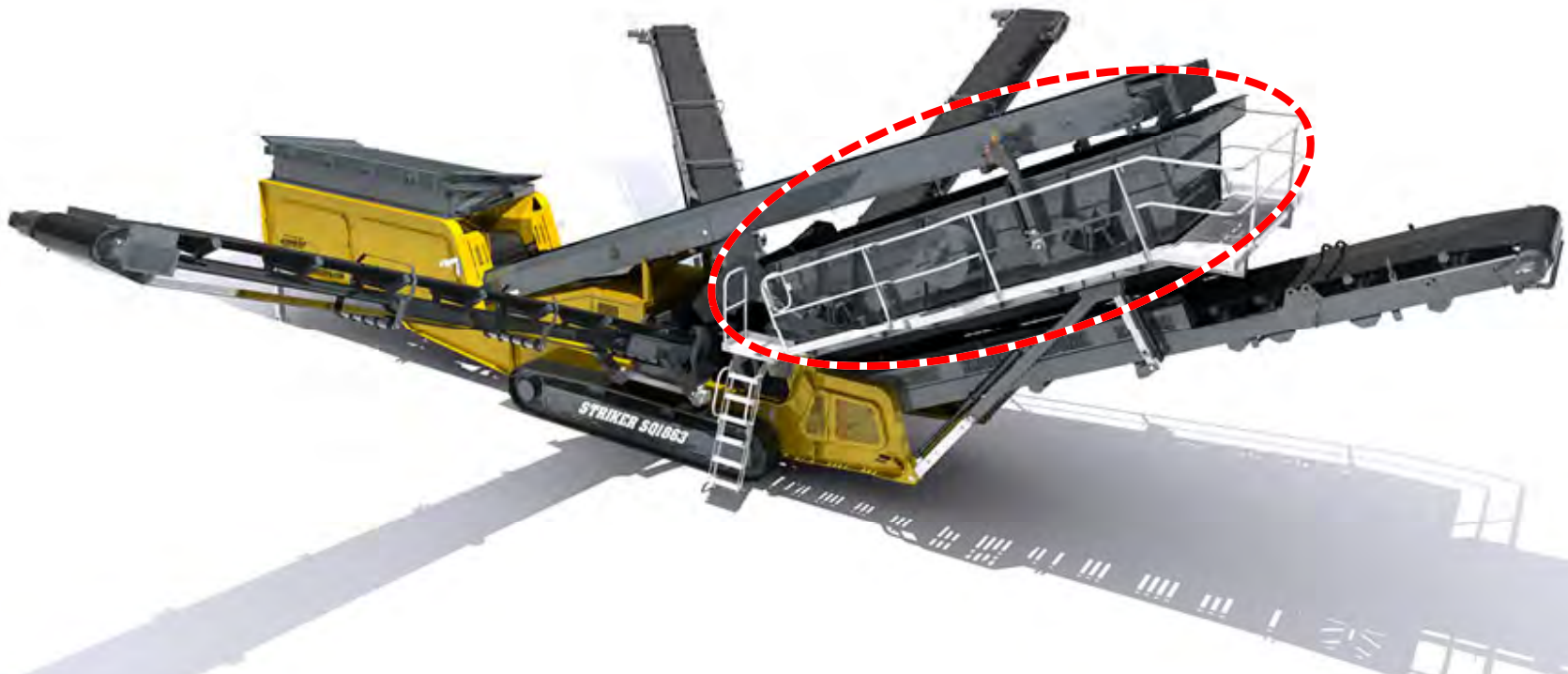
- | Loading Height – 3337mm (10' 11")
- | Feed Hopper Capacity – 9m³ (12yd³)
- | Feed type chassis c/w 4.3m hopper
- | Variable speed conveyor
- | Hydraulic jacking leg



Feed Hopper Dimensions



Screen



Screen Box

- | 2 bearing screen box

- | Tripple Deck Screen:

 - Side Tensioned Top Deck - 5.5m x 1.8m (18ft x 6ft)

 - Side Tensioned Middle Deck - 5.5m x 1.8m (18ft x 6ft)

 - Side Tensioned Bottom Deck - 5.5m x 1.8m (18ft x 6ft)

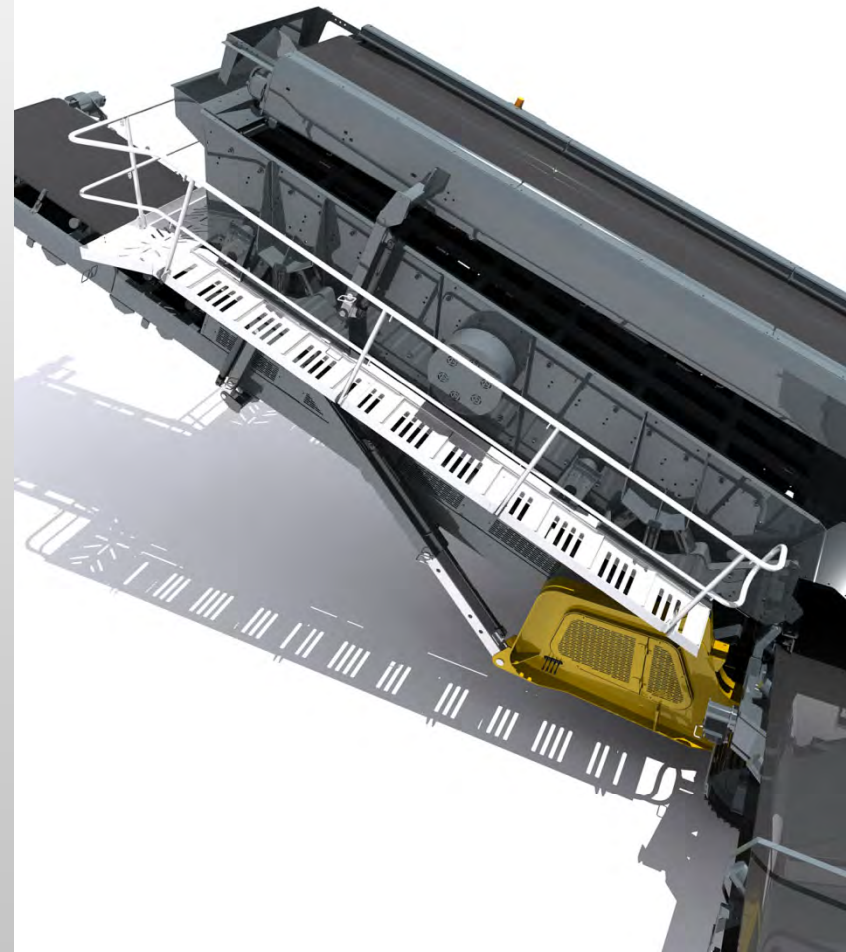
- | Heavy duty screen box

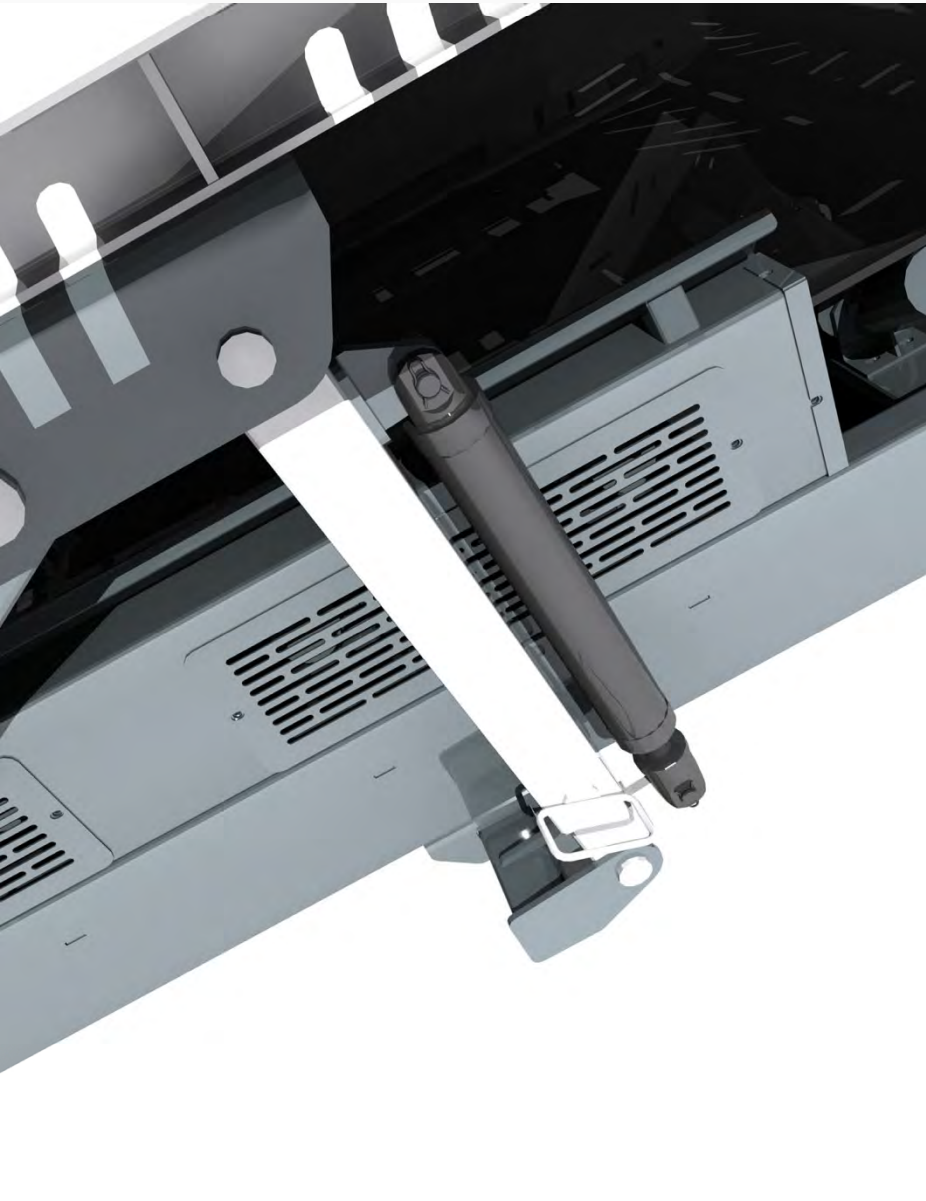
- | Breaker box c/w spreader plate and steel wear plate at feed point

- | Hydraulic screen angle adjustment

- | Screen walkway & access ladder

- | Screen blanket





Screen Angle

Screen angle can be adjusted
between 20°-25°

Hydraulically lifted into position

Rapid on site setup and operation

Complete flexibility onsite

Other Top Deck Types

Woven Mesh
Various
Apertures

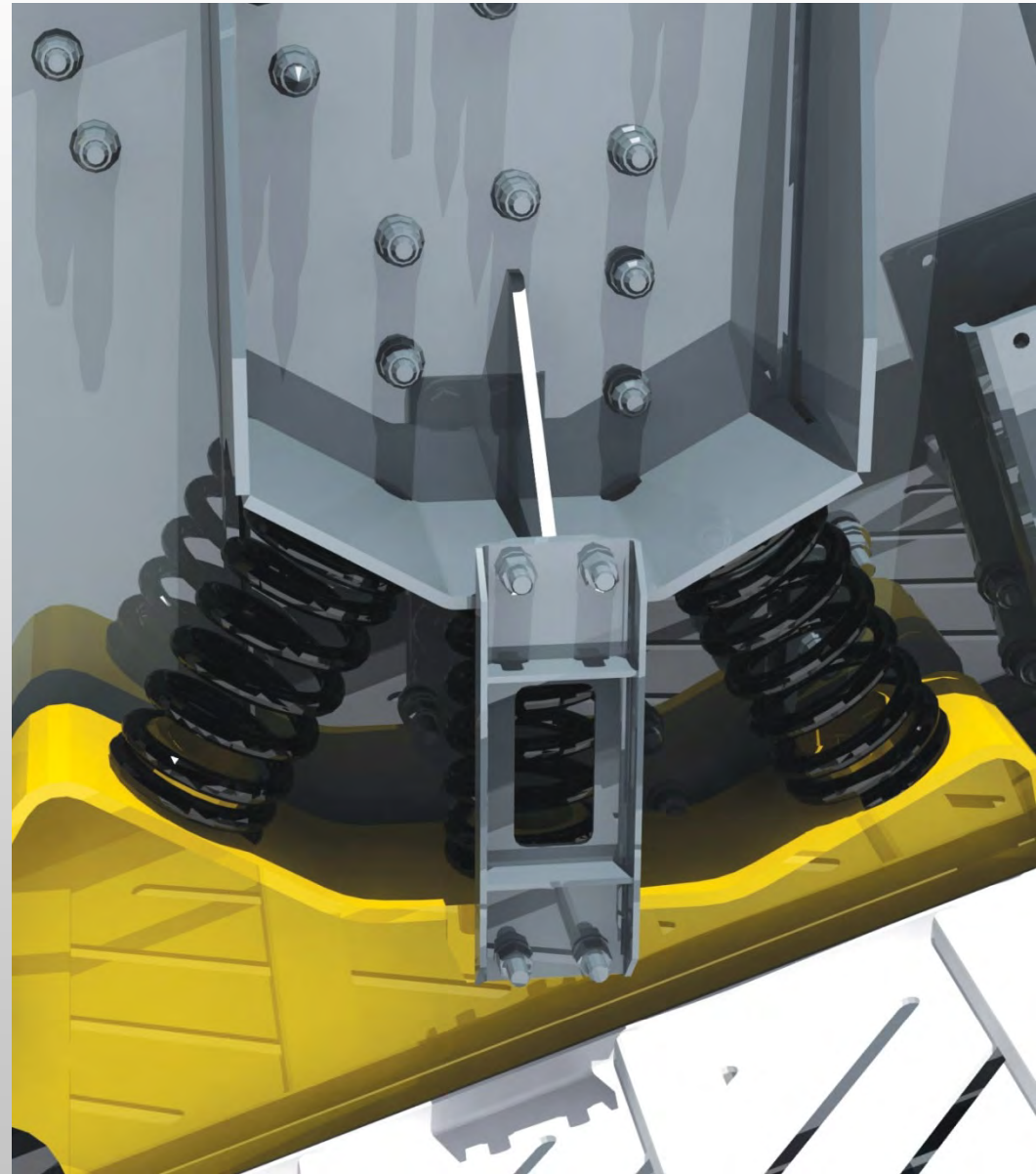
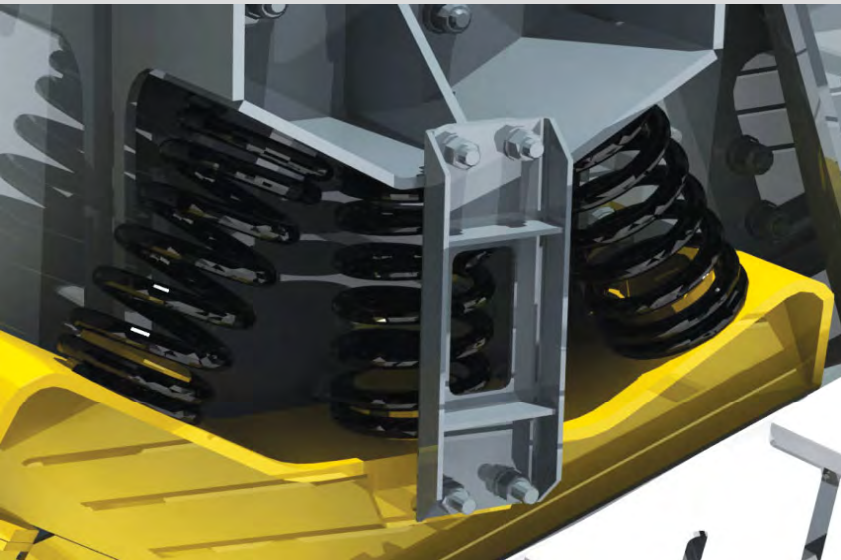


3" Punch
Plate
Assembly

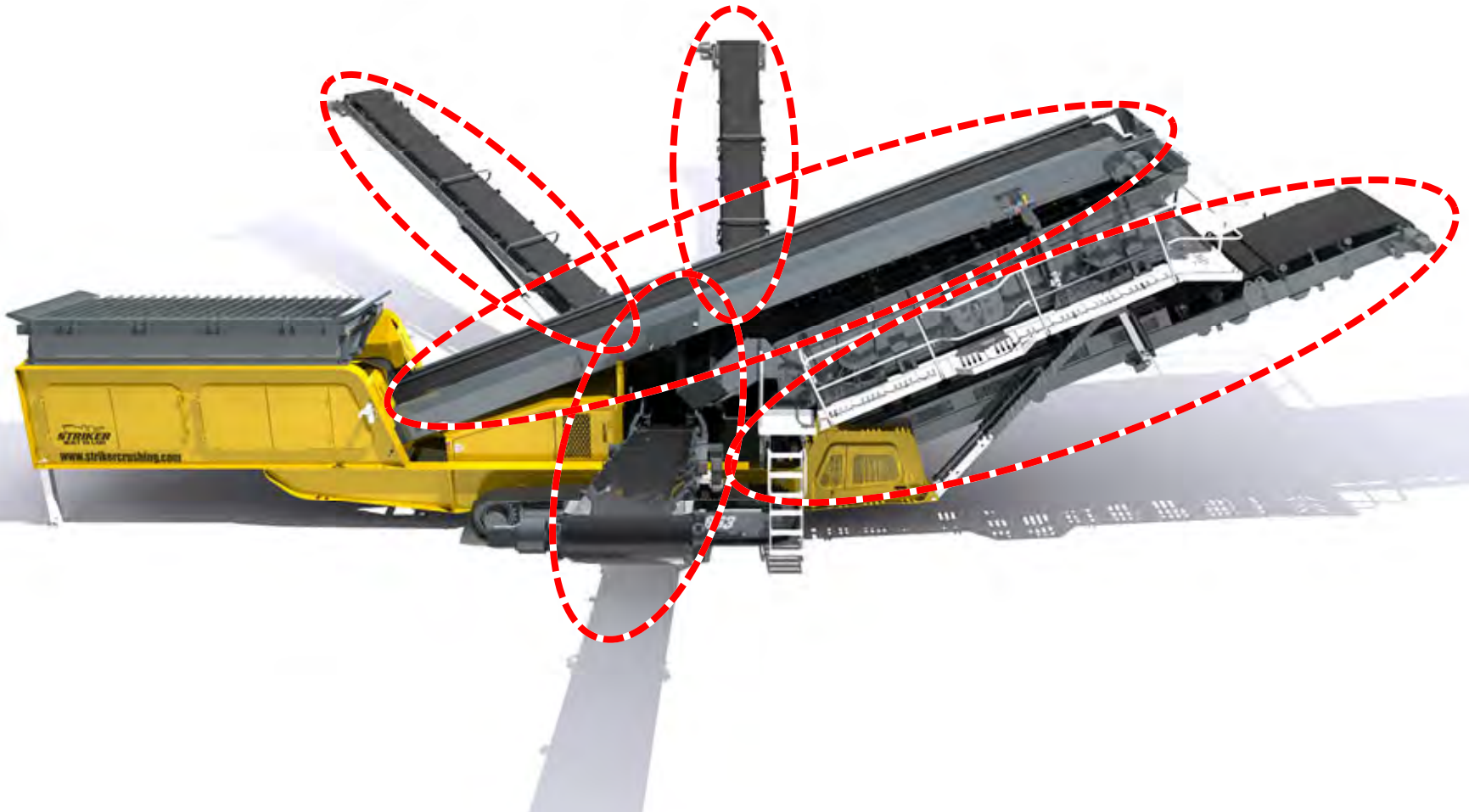
Screen Supports

Screen box is mounted independently from the chassis

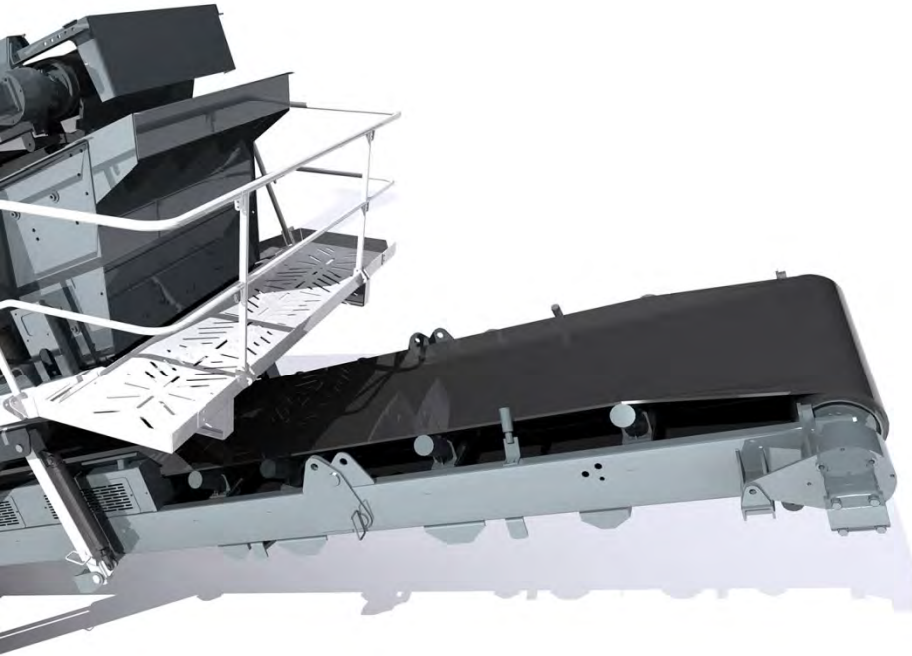
Four sets of three springs absorb the screens vibration to reduce stress on the main chassis



Plant Conveyors



Fines Products Conveyor



- Heavy duty 3 ply belt 1500mm (59") wide
- Directly below the screen discharge the conveyor has impact bars which take the load of crushed material impacting the belt
- Discharge height of 4599mm (15' 1")
- Hydraulic open and close

Main Feed Conveyor

- Heavy duty 3 ply belt 1200mm (48") wide
- Fitted with adjustable rubber skirts and an adjustable spreader plate to disperse material evenly onto the screen
- Hydraulic adjustment
- Steel/rubber skirting incorporating anti-roll back deflectors
- Hydraulic raise and lower of head section for screen mesh access



Side Conveyors

Heavy duty 3 ply chevron belt
800mm (31") wide 2 of
600mm (24") wide 1 of

Hydraulically folding for transport
to give a shorter transport length

Side conveyor discharge height
of 4500mm (14' 9")

Hydraulic open and close

Variable speed control on each
side conveyor



Belt Retainers

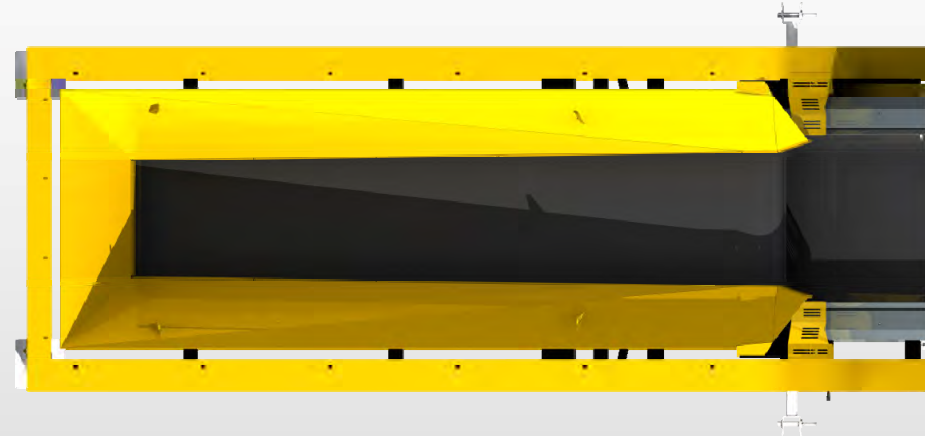
- | Side conveyor belt retainers fitted as standard
- | Prevents belt damage during transport



Belt Feed Conveyor

Heavy duty belt 1200mm (48") wide and an extra wide opening reduces blockage

Support legs are galvanised



Power Pack

Powered by a CATERPILLAR® C4.4 Tier 3 Equivalent 4 Cylinder diesel engine rated at 96kW

The engine complies with all current emission laws

Development in progress to update to Tier 4 type engine

Low level, easy access for maintenance via folding panel doors

Easy to maintain, reliable and efficient

Hydraulic oil Grade 68



Fuel & Hydraulic Tanks

- 300 litre (66 gal) standard capacity fuel tank
- 460 litre (101 gal) standard capacity hydraulic tank
- Level indicator gauges
- Hydraulic oil filtration system and air filter
- Hydraulic oil cooler fitted as standard
- Lockable filler cap



Hydraulic Components

Easy access to hydraulic components for maintenance

Simple ON/OFF hydraulic blocks

The hydraulic system powers:

Feed hopper

Screen

Tracks

Oversize conveyor

Side conveyors



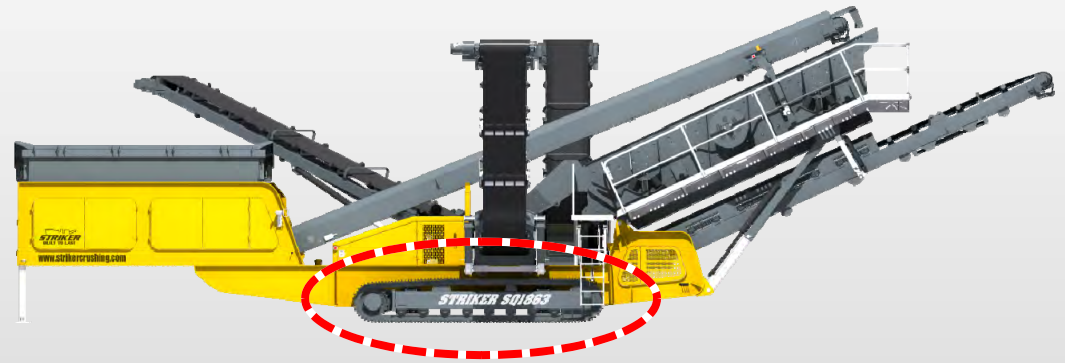
Controls

- | Simple user friendly operation
- | Clearly marked diagrammatic fault monitoring
- | Low voltage system



Tracks

- Hydraulically driven crawler tracks
- Track centres 3840mm (12' 7")
- Track shoe width 400mm (1' 4")



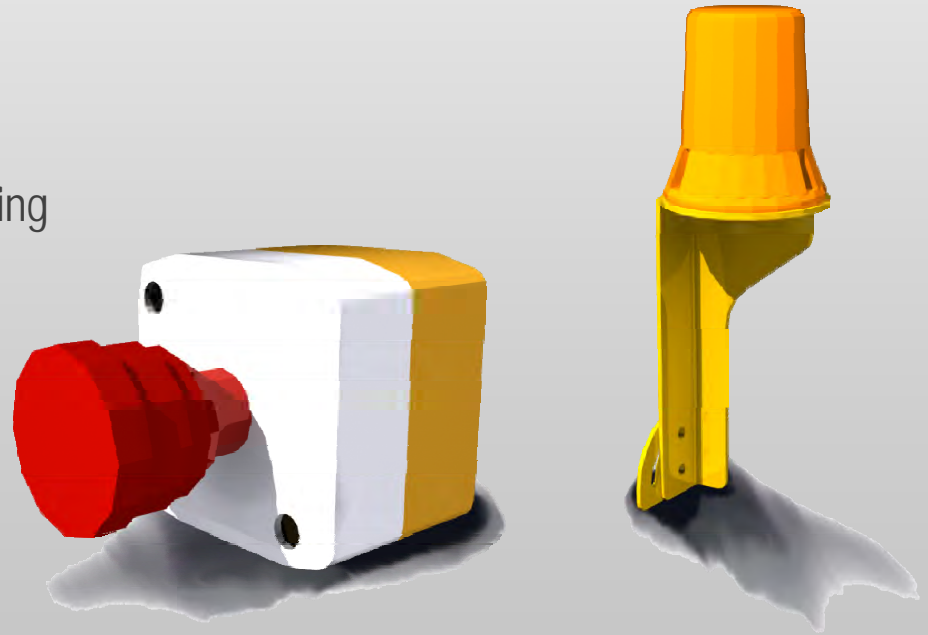
Remote Control Unit

- Ergonomic, robust hand held remote control suitable for working environments
- Emergency stop button suitably located
- Left & right track movement forward & reverse
- Radio remote control unit



Machine Safety Aspects

- Nip point guarding
- External conveyor belt adjustment
- Remote greasing
- 7 second engine start delay & siren
- Warning siren to alert that the machine is tracking
- Engine (emergency) stops
- Lanyard (pull wire) fitted to the side of the chassis (Optional)



Options

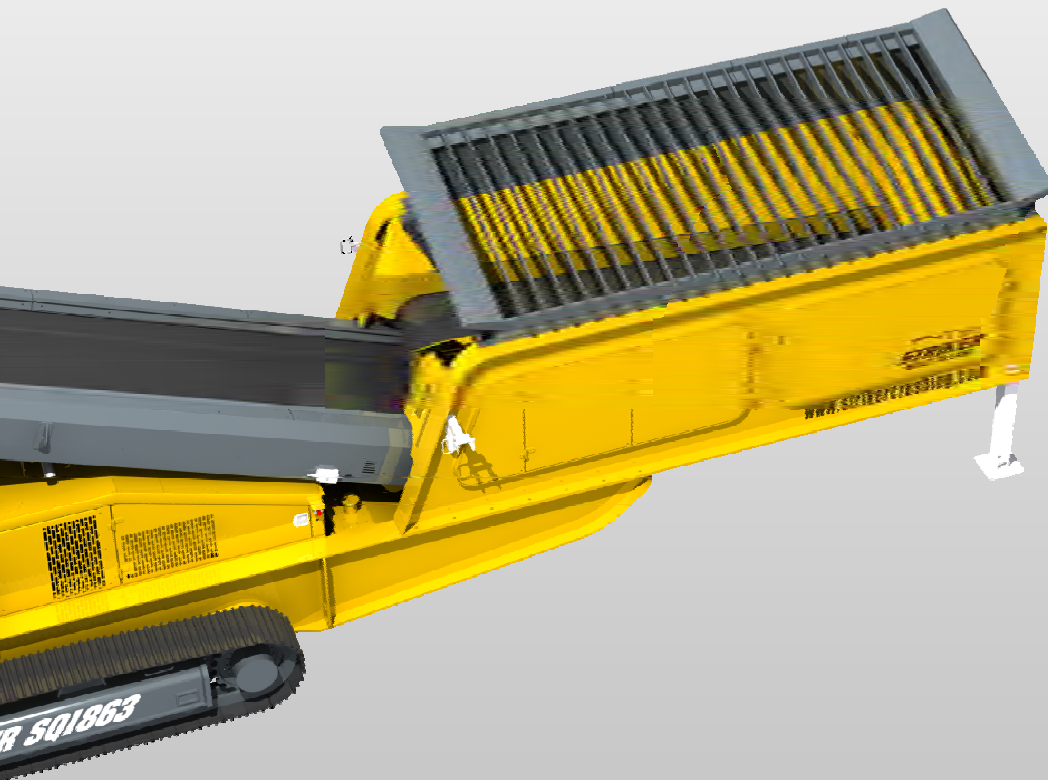
- | Dust suppression system
- | Radio controlled tracks
- | Top deck mesh or punchplate
- | Wear resistance steel apron feeder or belt feeder
- | Arctic package for operating conditions – 20 °C
- | Desert package for operating conditions + 50 °C
- | Plant lighting tower
- | 3 meter air extension kit for engine air cleaner
- | Paint

Vibrating Grid (Option)

No grid

Grid aperture: -100mm (4")

12ft 2 Deck vibrating grid c/w radio control tipping bofor grid 100mm (4") top deck and 38mm (1.5") bottom deck mesh



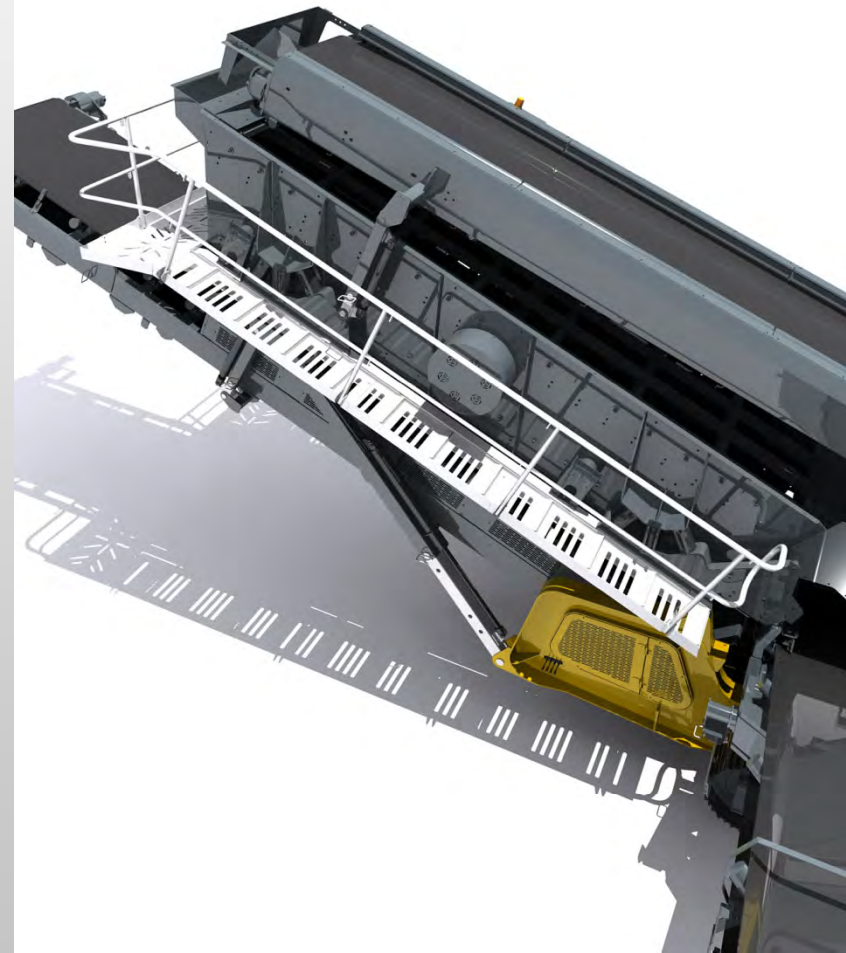
Conveyors (Option)

Spherical Roller Bearings with 2 piece housings all conveyors



Screen Box (Option)

- | Screen soft start and stop



Screen Mesh (Option)



Top Deck

Middle Deck

Bottom Deck Speedharp

Bottom deck 2nd split

Bottom deck 3rd split

Power Pack (Option)

Powered by a CATERPILLAR® C4.4 Tier 4F- 4 Cylinder diesel engine rated at 96kW



Remote Control Unit (Option)

Umbilical remote control unit



Selling Features Summary

Strong, reliable, robust heavy duty body designed & engineered web & flange chassis, fully welded & fabricated from high grade steel to withstand the rigors of operation & transportation

CATERPILLAR® engine as standard, compliant to industry regulations

Heavy duty tracks suitable for any environment

Extra wide product conveyor with full length rubber side skirts utilising wear resistant steel clamp plates. Maximised discharge height for product stockpiling

Hydraulically folding conveyor for compact transportation and rapid operational setup